

FINERY **ANTI- UNIFORM**

Catalogue 2024



Designing the Anti-Uniform Since 2013.



MISSION.

Finery is a design & manufacturing studio dedicated to elevating the uniform as a craft.

PURPOSE.

Designed in Los Angeles, we work with a global clientele to outfit staff in modern reinterpretations of uniforms that are culturally aware and convey the values of their brand.

VISION.

Combining responsibly sourced materials with elevated design, we believe in the power of an Anti-Uniform to project excellence, inspire pride, and bestow dignity upon all working people, regardless of their position.

APPROACH.

Finery is an alternative to the outdated, cookie-cutter conformity of the uniform companies you've come to expect. Approaching uniforms as a balance of style, quality, comfort, durability, and sustainability, we ensure each garment not only embodies an elevated expression of the traditional uniform, but also honors its workwear heritage.

Our process is streamlined and personal; our design sophisticated and thoughtful; and our garments refined and purposeful.



Elevated workwear that
elevates workers.

TABLE OF CONTENTS

TOPS	P. 5 - 85
OUTERWEAR	P. 86 - 129
FORMAL	P. 130 - 173
DRESSES	P. 174 - 204
BOTTOMS	P. 205 - 223
APRONS	P. 224 - 270
ROBES	P. 271 - 280
ACCESSORIES	P. 281 - 299
FABRICS	P. 300 - 332

Best viewed using Chrome browser. In Chrome to more quickly find items, click on the icons in the left column to jump sections. You can also keyword search by using COMMAND F/CONTROL F. If using Safari, download and view in Acrobat or Preview.



TOPS





Model is wearing a size M

Style # MT001 | Male

Slim Long Sleeve Button Down Shirt

(Model pictured in White Cotton Poplin)

Pricing

6~10	11~25	26~50	51~99	100+	200+	500+	1000+
\$115	\$74	\$72	\$68	\$59	\$58	\$49	\$44

Sizing

	S	M	L	XL	2X	3X
Chest:	42"	44"	46"	48"	50"	52"
Sleeve:	25"	25.5"	26"	26.5"	27"	27.5"
Shoulder:	17.5"	18.5"	19.5"	20.5"	21.5"	22.5"

Description:

Classic slim long sleeve button down shirt with a modern silhouette. Single pocket with a straight cut hem allowing for this piece to be worn neatly untucked.

Fit:

Slimmer fit than traditional uniforms. If in doubt go up a size.

Material Options:

(Core) Cotton Poplin, Cotton Oxford, Chambray, Poly Cotton, Poly
 (Premium) Linen, Linen Blend

Color Options:

Black, Ivory, Navy, White. See fabric section for options.

Care Instructions:

Cold, regular wash. Tumble dry on low or lay flat to dry. Natural fading over time. No bleach.



Pictured in Navy Cotton Poplin





Model is wearing a size XS

Style # FT001 | Female

Slim Long Sleeve Button Down Shirt

(Model pictured in White Cotton Poplin)

Pricing

6~10	11~25	26~50	51~99	100+	200+	500+	1000+
\$115	\$74	\$72	\$68	\$59	\$58	\$49	\$44

Sizing

	XS	S	M	L	XL	2X
Chest:	34"	36"	38"	40"	42"	44"
Sleeve:	23.5"	24"	24.5"	25"	25.5"	26"
Shoulder:	14"	15"	16"	17"	18"	19"

Description:

Classic slim long sleeve button down shirt with a modern silhouette. Single pocket with a straight cut hem allowing for this piece to be worn neatly untucked.

Fit:

Slimmer fit than traditional uniforms. If in doubt go up a size.

Material Options:

(Core) Cotton Poplin, Cotton Oxford, Chambray, Poly Cotton, Poly
 (Premium) Linen, Linen Blend

Color Options:

Black, Chambray, Navy, White. See fabric section for options.

Care Instructions:

Cold, regular wash. Tumble dry on low or lay flat to dry. Natural fading over time. No bleach.



Pictured in Blue Chambray





Model is wearing a size M

Style # MT002 | Male

Slim Long Sleeve Hidden Placket Shirt

(Model pictured in Ivory Linen Blend)

Pricing

6~10	11~25	26~50	51~99	100+	200+	500+	1000+
\$115	\$74	\$72	\$68	\$59	\$58	\$49	\$44

Sizing

	S	M	L	XL	2X	3X
Chest:	42"	44"	46"	48"	50"	52"
Sleeve:	25"	25.5"	26"	26.5"	27"	27.5"
Shoulder:	17.5"	18.5"	19.5"	20.5"	21.5"	22.5"

Description:

An elevated version of our classic button down shirt with a narrow 1.5" collar. The placket is hidden, exposing only a single button on top. Very narrow placket measuring 1.25".

Fit:

Slimmer fit than traditional uniforms. If in doubt go up a size.

Material Options:

(Core) Cotton Poplin, Chambray, Poly Cotton, Poly (Premium) Linen, Linen Blend

Color Options:

Black, Navy, White. See fabric section for options.

Care Instructions:

Cold, regular wash. Tumble dry on low or lay flat to dry. Natural fading over time. No bleach. Button placket must be ironed.



Pictured in Black Cotton Poplin





Model is wearing a size S

Style # FT002 | Female

Slim Long Sleeve Hidden Placket Shirt

(Model pictured in Navy Cotton Poplin)

Pricing

6~10	11~25	26~50	51~99	100+	200+	500+	1000+
\$115	\$74	\$72	\$68	\$59	\$58	\$49	\$44

Sizing

	XS	S	M	L	XL	2X
Chest:	34"	36"	38"	40"	42"	44"
Sleeve:	23.5"	24"	24.5"	25"	25.5"	26"
Shoulder:	14"	15"	16"	17"	18"	19"

Description:

An elevated version of our classic button down shirt with a narrow 1.5" collar. The placket is hidden, exposing only a single button on top. Very narrow placket measuring 1.25".

Fit:

Slimmer fit than traditional uniforms. If in doubt go up a size.

Material Options:

(Core) Cotton Poplin, Chambray, Poly Cotton, Poly (Premium) Linen, Linen Blend

Color Options:

Black, Navy, White. See fabric section for options.

Care Instructions:

Cold, regular wash. Tumble dry on low or lay flat to dry. Natural fading over time. No bleach. Button placket must be ironed.



Pictured in White Cotton Poplin





*Black
Cotton Poplin*

*White
Cotton Poplin*





*Black
Cotton Poplin*



*Navy
Cotton Poplin*



*White
Cotton Poplin*





Model is wearing a size M

Style # MT019 | Male

Slim Long Sleeve Hidden Placket Shirt, Banded Collar

(Model pictured in White Cotton Poplin)

Pricing

6~10	11~25	26~50	51~99	100+	200+	500+	1000+
\$115	\$74	\$72	\$68	\$59	\$58	\$49	\$44

Sizing

	S	M	L	XL	2X	3X
Chest:	42"	44"	46"	48"	50"	52"
Sleeve:	25"	25.5"	26"	26.5"	27"	27.5"
Shoulder:	17.5"	18.5"	19.5"	20.5"	21.5"	22.5"

Description:

An elevated version of our banded button down shirt with a narrow 1.5" collar. The placket is hidden, exposing only a single button on top. Very narrow placket measuring 1.25".

Fit:

Slimmer fit than traditional uniforms. If in doubt go up a size.

Material Options:

(Core) Cotton Poplin, Chambray, Poly Cotton, Poly (Premium) Linen, Linen Blend

Color Options:

Black, Navy, White. See back section for options.

Care Instructions:

Cold, regular wash. Tumble dry on low or lay flat to dry. Natural fading over time. No bleach. Button placket must be ironed.



Pictured in Navy Cotton Poplin





Model is wearing a size S

Style # FT019 | Female

Slim Long Sleeve Hidden Placket Shirt, Banded Collar

(Model pictured in Black Cotton Poplin)

Pricing

6~10	11~25	26~50	51~99	100+	200+	500+	1000+
\$115	\$74	\$72	\$68	\$59	\$58	\$49	\$44

Sizing

	XS	S	M	L	XL	2X
Chest:	34"	36"	38"	40"	42"	44"
Sleeve:	23.5"	24"	24.5"	25"	25.5"	26"
Shoulder:	14"	15"	16"	17"	18"	19"



Pictured in White Cotton Poplin

Description:

An elevated version of our banded button down shirt with a narrow 1.5" collar. The placket is hidden, exposing only a single button on top. Very narrow placket measuring 1.25".

Fit:

Slimmer fit than traditional uniforms. If in doubt go up a size.

Material Options:

(Core) Cotton Poplin, Chambray, Poly Cotton, Poly (Premium) Linen, Linen Blend

Color Options:

Black, Navy, White. See fabric section for options.

Care Instructions:

Cold, regular wash. Tumble dry on low or lay flat to dry. Natural fading over time. No bleach. Button placket must be ironed.





Model is wearing a size M

Style # MT004 | Male

Slim Long Sleeve Banded Collar Shirt

(Model pictured in Blue Linen Blend)

Pricing

6~10	11~25	26~50	51~99	100+	200+	500+	1000+
\$115	\$74	\$72	\$68	\$59	\$58	\$49	\$44

Sizing

	S	M	L	XL	2X	3X
Chest:	42"	44"	46"	48"	50"	52"
Sleeve:	25"	25.5"	26"	26.5"	27"	27.5"
Shoulder:	17.5"	18.5"	19.5"	20.5"	21.5"	22.5"

Description:

Classic slim long sleeve button down shirt with a narrow banded collar. Single pocket with a straight cut hem allowing for this piece to be worn neatly untucked.

Fit:

Slimmer fit than traditional uniforms. If in doubt go up a size.

Material Options:

(Core) Cotton Poplin, Cotton Oxford, Chambray, Poly Cotton, Poly

(Premium) Linen, Linen Blend

Color Options:

Black, Chambray, Navy, White. See fabric section for options.

Care Instructions:

Cold, regular wash. Tumble dry on low or lay flat to dry. Natural fading over time. No bleach.



Pictured in Ivory Linen Blend





Model is wearing a size S

Style # FT004 | Female

Slim Long Sleeve Banded Collar Shirt

(Model pictured in Navy Cotton Poplin)

Pricing

6~10	11~25	26~50	51~99	100+	200+	500+	1000+
\$115	\$74	\$72	\$68	\$59	\$58	\$49	\$44

Sizing

	XS	S	M	L	XL	2X
Chest:	34"	36"	38"	40"	42"	44"
Sleeve:	23.5"	24"	24.5"	25"	25.5"	26"
Shoulder:	14"	15"	16"	17"	18"	19"

Description:

Classic slim long sleeve button down shirt with a narrow banded collar. Single pocket with a straight cut hem allowing for this piece to be worn neatly untucked.

Fit:

Slimmer fit than traditional uniforms. If in doubt go up a size.

Material Options:

(Core) Cotton Poplin, Cotton Oxford, Chambray, Poly Cotton, Poly
 (Premium) Linen, Linen Blend

Color Options:

Black, Chambray, Navy, White. See fabric section for options.

Care Instructions:

Cold, regular wash. Tumble dry on low or lay flat to dry. Natural fading over time. No bleach.



Pictured in Blue Linen Blend





*Red
Linen Blend*



*Ivory
Linen Blend*



*OD Green
Linen Blend*



*Flax
Linen Blend*





Model is wearing a size M

Style # MT003 | Male

Notch Collar Long Sleeve Button Down Shirt

(Model pictured in OD Green Linen Blend)

Pricing

6~10	11~25	26~50	51~99	100+	200+	500+	1000+
\$119	\$76	\$73	\$70	\$59	\$57	\$49	\$43

Sizing

	S	M	L	XL	2X	3X
Chest:	39"	41"	43"	45"	47"	49"
Sleeve:	26"	26.5"	27"	27.5"	28"	28.5"
Shoulder:	17.5"	18.5"	19.5"	20.5"	21.5"	22.5"

Description:

A looser fit long sleeve button down shirt. Features a notch collar for a more relaxed feel. Designed to be worn loose fitting. Straight cut hem allowing for this piece to be worn neatly untucked. Single pocket.

Fit:

Boxy fit. Loose fitting.

Material Options:

(Core) Cotton Poplin, Cotton Oxford, Chambray, Poly Cotton, Poly
 (Premium) Linen, Linen Blend

Color Options:

Black, Chambray, Navy, White. See fabric section for options.

Care Instructions:

Cold, regular wash. Tumble dry on low or lay flat to dry. Natural fading over time. No bleach.



Pictured in Pink Cotton Oxford





Model is wearing a size S

Style # FT003 | Female

Notch Collar Long Sleeve Button Down Shirt

(Model pictured in Ivory Linen Blend)

Pricing

6~10	11~25	26~50	51~99	100+	200+	500+	1000+
\$119	\$76	\$73	\$70	\$59	\$57	\$49	\$43

Sizing

	XS	S	M	L	XL	2X
Chest:	35"	37"	39"	41"	43"	45"
Sleeve:	24.5"	25"	25.5"	26"	26.5"	27"
Shoulder:	16.5"	17.5"	18.5"	19.5"	20.5"	21.5"

Description:

A looser fit long sleeve button down shirt. Features a notch collar for a more relaxed feel. Designed to be worn loose fitting. Straight cut hem allowing for this piece to be worn neatly untucked. Single pocket.

Fit:

Boxy fit. Loose fitting.

Material Options:

(Core) Cotton Poplin, Cotton Oxford, Chambray, Poly Cotton, Poly
 (Premium) Linen, Linen Blend

Color Options:

Black, Chambray, Navy, White. See fabric section for options.

Care Instructions:

Cold, regular wash. Tumble dry on low or lay flat to dry. Natural fading over time. No bleach.



Pictured in Blue Chambray





*Flax
Linen Blend*



*Sage
Poly*



*Pink
Cotton Oxford*



*Chestnut
Linen Blend*





Model is wearing a size M

Style # UT005 | Unisex

Shacket

(Model pictured in Navy Poly Felt)

Pricing

6~10	11~25	26~50	51~99	100+	200+	500+	1000+
\$125	\$92	\$89	\$83	\$78	\$76	\$73	\$68

Sizing

	XS	S	M	L	XL	2X	3X
Chest:	42"	44"	46"	48"	50"	52"	54"
Sleeve:	22.5"	23"	23.5"	24"	24.5"	25"	25.5"
Shoulder:	17.5"	18.5"	19.5"	20.5"	21.5"	22.5"	23.5"
Length:	30.5"	31"	31.5"	32"	32.5"	33"	33.5"



Pictured in Olive Poly Felt

Description:

A marriage between a shirt and a jacket perfect for in between seasons. Recommended in a poly felt for cozy warmth. Features 2 patch pockets with flap detail to hold smaller items. Great layering piece.

Fit:

Looser in the body and sleeve. Longer in length than traditional shirting. Women should size down 1 size.

Material Options:

- (Core) Poly Felt
- (Premium) Wool

Color Options:

Black, Charcoal, Navy, Olive. See fabric section for options.

Care Instructions:

Cold, regular wash. Tumble dry on low or lay flat to dry. Natural fading over time. No bleach.





Olive Poly Felt



Olive Poly Felt





Model is wearing a size M

Style # MT021 | Male

Oversized Tunic

(Model pictured in Navy Cotton Oxford)

Pricing

6~10	11~25	26~50	51~99	100+	200+	500+	1000+
\$149	\$97	\$87	\$79	\$77	\$74	\$72	\$65

Sizing

	S	M	L	XL	2X	3X
Chest:	48"	50"	52"	54"	56"	58"
Sleeve:	24.5"	25"	25.5"	26"	26.5"	27"
Shoulder:	18"	19"	20"	21"	22"	23"
Length (front):	31"	31.5"	32"	32.5"	33"	33.5"
Length (back):	34.5"	35"	35.5"	36"	36.5"	37"



Pictured in Ecru Cotton Oxford

Description:

An elegant and comfortable shirt featuring a set-in collar with a 4 button placket. The hem is curved with a longer hem in the back. The shirt is meant to be worn loose and flowy perfect for elevated resort looks.

Fit:

Oversized and long.

Material Options:

(Core) Cotton Oxford, Chambray, Poly Cotton
 (Premium) Linen, Linen Blend

Color Options:

Black, Chambray, Navy, White, Ecru. See fabric section for options.

Care Instructions:

Cold, regular wash. Tumble dry on low or lay flat to dry.
 Natural fading over time. No bleach.





Model is wearing a size S

Style # FT021 | Female

Oversized Tunic

(Model pictured in Ecrú Cotton Oxford)

Pricing

6~10	11~25	26~50	51~99	100+	200+	500+	1000+
\$149	\$97	\$87	\$79	\$77	\$74	\$72	\$65

Sizing

	XS	S	M	L	XL	2X
Chest:	43"	45"	47"	49"	51"	53"
Sleeve:	23.5"	24"	24.5"	25"	25.5"	26"
Shoulder:	14"	15"	16"	17"	18"	19"
Length (front):	27.5"	28"	28.5"	29"	29.5"	30"
Length (back):	31"	31.5"	32"	32.5"	33"	33.5"



Pictured in Red Linen Blend

Description:

An elegant and comfortable shirt featuring a set-in collar with a 4 button placket. The hem is curved with a longer hem in the back. The shirt is meant to be worn loose and flowy perfect for elevated resort looks.

Fit:

Oversized and long.

Material Options:

(Core) Cotton Oxford, Chambray, Poly Cotton
 (Premium) Linen, Linen Blend

Color Options:

Black, Chambray, Navy, White, Ecrú. See fabric section for options.

Care Instructions:

Cold, regular wash. Tumble dry on low or lay flat to dry.
 Natural fading over time. No bleach.





Ecrú Cotton Oxford



Red Linen Blend



Navy Cotton Oxford





Model is wearing a size L

Style # UT006 | Unisex

Long Sleeve Shirt

(Model pictured in Navy Cotton Jersey)

Pricing

6~10	11~25	26~50	51~99	100+	200+	500+	1000+
\$44	\$38	\$35	\$29	\$29	\$27	\$25	\$23

Sizing

	XS	S	M	L	XL	2X	3X
Chest:	34"	36"	38"	40"	42"	44"	46"
Sleeve:	25"	25.5"	26"	26.5"	27"	27.5"	28"
Shoulder:	15"	16"	17"	18"	19"	20"	21"



Pictured in Black Cotton Jersey

Description:

A classic long sleeve shirt. Great as a standalone or layering piece. Classic body that is slightly more on the slim side.

Fit:

Slim fit. If in doubt go up a size.

Material:

(Core) Cotton Jersey

Color Options:

Black, Navy, White.

Care Instructions:

Cold, regular wash. Tumble dry on low or lay flat to dry. Natural fading over time. No bleach.





*Black
Cotton Jersey*



*White
Cotton Jersey*





Model is wearing a size M

Style # MT005 | Male

Slim Short Sleeve Button Down Shirt

(Model pictured in Ivory Linen)

Pricing

6~10	11~25	26~50	51~99	100+	200+	500+	1000+
\$109	\$69	\$67	\$63	\$52	\$49	\$44	\$42

Sizing

	S	M	L	XL	2X	3X
Chest:	42"	44"	46"	48"	50"	52"
Sleeve:	9.25"	9.5"	9.75"	10"	10.25"	10.5"
Shoulder:	17.5"	18.5"	19.5"	20.5"	21.5"	22.5"

Description:

Classic slim short sleeve button down shirt with a modern silhouette. Single pocket with a straight cut hem allowing this piece to be worn neatly untucked.

Fit:

Slimmer fit than traditional uniforms. If in doubt go up a size.

Material Options:

(Core) Cotton Poplin, Cotton Oxford, Chambray, Poly Cotton, Poly
 (Premium) Linen, Linen Blend

Color Options:

Black, Chambray, Navy, White. See fabric section for options.

Care Instructions:

Cold, regular wash. Tumble dry on low or lay flat to dry. Natural fading over time. No bleach.



Pictured in White Cotton Poplin





Model is wearing a size XS

Style # FT005 | Female

Slim Short Sleeve Button Down Shirt

(Model pictured in Blue Chambray)

Pricing

6~10	11~25	26~50	51~99	100+	200+	500+	1000+
\$109	\$69	\$67	\$63	\$52	\$49	\$44	\$42

Sizing

	XS	S	M	L	XL	2X
Chest:	34"	36"	38"	40"	42"	44"
Sleeve:	6.75"	7"	7.25"	7.5"	7.75"	8"
Shoulder:	14"	15"	16"	17"	18"	19"

Description:

Classic slim short sleeve button down shirt with a modern silhouette. Single pocket with a straight cut hem allowing this piece to be worn neatly untucked.

Fit:

Slimmer fit than traditional uniforms. If in doubt go up a size.

Material Options:

(Core) Cotton Poplin, Cotton Oxford, Chambray, Poly Cotton, Poly
 (Premium) Linen, Linen Blend

Color Options:

Black, Chambray, Navy, White. See fabric section for options.

Care Instructions:

Cold, regular wash. Tumble dry on low or lay flat to dry. Natural fading over time. No bleach.



Pictured in Blue Chambray





Model is wearing a size M

Style # MT007 | Male

Slim Short Sleeve Banded Collar Shirt

(Model pictured in Silver Linen Blend)

Pricing

6~10	11~25	26~50	51~99	100+	200+	500+	1000+
\$109	\$69	\$67	\$63	\$52	\$49	\$44	\$42

Sizing

	S	M	L	XL	2X	3X
Chest:	42"	44"	46"	48"	50"	52"
Sleeve:	9.25"	9.5"	9.75"	10"	10.25"	10.5"
Shoulder:	17.5"	18.5"	19.5"	20.5"	21.5"	22.5"



Pictured in Ivory Linen Blend

Description:

Classic slim short sleeve button down shirt with a narrow banded collar. Single pocket with a straight cut hem allowing for this piece to be worn neatly untucked.

Fit:

Slimmer fit than traditional uniforms. If in doubt go up a size.

Material Options:

(Core) Cotton Poplin, Cotton Oxford, Chambray, Poly Cotton, Poly

(Premium) Linen, Linen Blend

Color Options:

Black, Chambray, Navy, White. See fabric section for options.

Care Instructions:

Cold, regular wash. Tumble dry on low or lay flat to dry. Natural fading over time. No bleach.





Model is wearing a size S

Style # FT007 | Female

Slim Short Sleeve Banded Collar Shirt

(Model pictured in Chestnut Linen Blend)

Pricing

6~10	11~25	26~50	51~99	100+	200+	500+	1000+
\$109	\$69	\$67	\$63	\$52	\$49	\$44	\$42

Sizing

	XS	S	M	L	XL	2X
Chest:	34"	36"	38"	40"	42"	44"
Sleeve:	6.75"	7"	7.25"	7.5"	7.75"	8"
Shoulder:	14"	15"	16"	17"	18"	19"

Description:

Classic slim short sleeve button down shirt with a narrow banded collar. Single pocket with a straight cut hem allowing for this piece to be worn neatly untucked.

Fit:

Slimmer fit than traditional uniforms. If in doubt go up a size.

Material Options:

(Core) Cotton Poplin, Cotton Oxford, Chambray, Poly Cotton, Poly
 (Premium) Linen, Linen Blend

Color Options:

Black, Chambray, Navy, White. See fabric section for options.

Care Instructions:

Cold, regular wash. Tumble dry on low or lay flat to dry. Natural fading over time. No bleach.



Pictured in Silver Linen Blend





Navy Poly Cotton



OD Green Linen Blend



White Poly Cotton



Ivory Linen Blend





Model is wearing a size M

Style # MT006 | Male

Notch Collar Short Sleeve Button Down Shirt

(Model pictured in Blue Chambray)

Pricing

6~10	11~25	26~50	51~99	100+	200+	500+	1000+
\$113	\$72	\$69	\$66	\$57	\$54	\$48	\$44

Sizing

	S	M	L	XL	2X	3X
Chest:	39"	41"	43"	45"	47"	49"
Sleeve:	9.25"	9.5"	9.75"	10"	10.25"	10.5"
Shoulder:	17.5"	18.5"	19.5"	20.5"	21.5"	22.5"



Pictured in Blue Linen Blend

Description:

A looser fit short sleeve button down shirt. Features a notch collar for a more relaxed feel. Designed to be worn loose fitting. Straight cut hem allowing for this piece to be worn neatly untucked. Single pocket.

Fit:

Boxy fit. Loose fitting.

Material Options:

(Core) Cotton Poplin, Cotton Oxford, Chambray, Poly Cotton, Poly
 (Premium) Linen, Linen Blend

Color Options:

Black, Chambray, Navy, White. See fabric section for options.

Care Instructions:

Cold, regular wash. Tumble dry on low or lay flat to dry. Natural fading over time. No bleach.





Model is wearing a size S

Style # FT006 | Female

Notch Collar Short Sleeve Button Down Shirt

(Model pictured in Ivory Linen Blend)

Pricing

6~10	11~25	26~50	51~99	100+	200+	500+	1000+
\$113	\$72	\$69	\$66	\$57	\$54	\$48	\$44

Sizing

	XS	S	M	L	XL	2X
Chest:	36"	38"	40"	42"	44"	46"
Sleeve:	8.75"	9"	9.25"	9.5"	9.75"	10"
Shoulder:	16.5"	17.5"	18.5"	19.5"	20.5"	21.5"

Description:

A looser fit short sleeve button down shirt. Features a notch collar for a more relaxed feel. Designed to be worn loose fitting. Straight cut hem allowing for this piece to be worn neatly untucked. Single pocket.

Fit:

Boxy fit. Loose fitting.

Material Options:

(Core) Cotton Poplin, Cotton Oxford, Chambray, Poly Cotton, Poly
 (Premium) Linen, Linen Blend

Color Options:

Black, Chambray, Navy, White. See fabric section for options.

Care Instructions:

Cold, regular wash. Tumble dry on low or lay flat to dry. Natural fading over time. No bleach.



Pictured in OD Green Linen Blend





Burgundy Poly Cotton



Sage Poly Cotton



Ivory Linen Blend



Red Linen Blend





Ivory Linen Blend



Gray Linen Blend





Model is wearing a size M

Style # MT025 | Male

Slim Short Sleeve Hidden Placket Shirt

(Model pictured in White Poly Cotton)

Pricing

6~10	11~25	26~50	51~99	100+	200+	500+	1000+
\$109	\$69	\$67	\$63	\$52	\$49	\$44	\$42

Sizing

	S	M	L	XL	2X	3X
Chest:	42"	44"	46"	48"	50"	52"
Sleeve:	9.25"	9.5"	9.75"	10"	10.25"	10.5"
Shoulder:	17.5"	18.5"	19.5"	20.5"	21.5"	22.5"



Pictured in Ivory Linen

Description:

An elevated version of our classic button down shirt with a narrow 1.5" collar. The placket is hidden, exposing only a single button on top. Very narrow placket measuring 1.25".

Fit:

Slimmer fit than traditional uniforms. If in doubt go up a size.

Material Options:

(Core) Cotton Poplin, Chambray, Poly Cotton, Poly (Premium) Linen, Linen Blend

Color Options:

Black, Navy, White. See fabric section for options.

Care Instructions:

Cold, regular wash. Tumble dry on low or lay flat to dry. Natural fading over time. No bleach. Button placket must be ironed.





Model is wearing a size XS

Style # FT025 | Female
Slim Short Sleeve Hidden Placket Shirt

(Model pictured in Ivory Linen Blend)

Pricing

6~10	11~25	26~50	51~99	100+	200+	500+	1000+
\$109	\$69	\$67	\$63	\$52	\$49	\$44	\$42

Sizing

	XS	S	M	L	XL	2X
Chest:	34"	36"	38"	40"	42"	44"
Sleeve:	6.75"	7"	7.25"	7.5"	7.75"	8"
Shoulder:	14"	15"	16"	17"	18"	19"



Pictured in Navy Poly Cotton

Description:

An elevated version of our classic button down shirt with a narrow 1.5" collar. The placket is hidden, exposing only a single button on top. Very narrow placket measuring 1.25".

Fit:

Slimmer fit than traditional uniforms. If in doubt go up a size.

Material Options:

(Core) Cotton Poplin, Chambray, Poly Cotton, Poly (Premium) Linen, Linen Blend

Color Options:

Black, Navy, White. See fabric section for options.

Care Instructions:

Cold, regular wash. Tumble dry on low or lay flat to dry. Natural fading over time. No bleach. Button placket must be ironed.





Model is wearing a size M

Style # MT020 | Male

Slim Short Sleeve Hidden Placket Shirt, Banded Collar

(Model pictured in White Cotton Poplin)

Pricing

6~10	11~25	26~50	51~99	100+	200+	500+	1000+
\$109	\$69	\$67	\$63	\$52	\$49	\$44	\$42

Sizing

	S	M	L	XL	2X	3X
Chest:	42"	44"	46"	48"	50"	52"
Sleeve:	9.25"	9.5"	9.75"	10"	10.25"	10.5"
Shoulder:	17.5"	18.5"	19.5"	20.5"	21.5"	22.5"



Pictured in Navy Cotton Poplin

Description:

An elevated version of our banded collar button down shirt with a narrow 1.5" collar. The placket is hidden, exposing only a single button on top. Very narrow placket measuring 1.25".

Fit:

Slimmer fit than traditional uniforms. If in doubt go up a size.

Material Options:

(Core) Cotton Poplin, Chambray, Poly Cotton, Poly (Premium) Linen, Linen Blend

Color Options:

Black, Navy, White. See fabric section for options.

Care Instructions:

Cold, regular wash. Tumble dry on low or lay flat to dry. Natural fading over time. No bleach. Button placket must be ironed.





Model is wearing a size S

Style # FT020 | Female

Slim Short Sleeve Hidden Placket Shirt, Banded Collar

(Model pictured in Black Cotton Poplin)

Pricing

6~10	11~25	26~50	51~99	100+	200+	500+	1000+
\$109	\$69	\$67	\$63	\$52	\$49	\$44	\$42

Sizing

	XS	S	M	L	XL	2X
Chest:	34"	36"	38"	40"	42"	44"
Sleeve:	6.75"	7"	7.25"	7.5"	7.75"	8"
Shoulder:	14"	15"	16"	17"	18"	19"

Description:

An elevated version of our classic button down shirt with a narrow 1.5" collar. The placket is hidden, exposing only a single button on top. Very narrow placket measuring 1.25".

Fit:

Slimmer fit than traditional uniforms. If in doubt go up a size.

Material Options:

(Core) Cotton Poplin, Chambray, Poly Cotton, Poly (Premium) Linen, Linen Blend

Color Options:

Black, Navy, White. See fabric section for options.

Care Instructions:

Cold, regular wash. Tumble dry on low or lay flat to dry. Natural fading over time. No bleach. Button placket must be ironed.



Pictured in White Cotton Poplin





Model is wearing a size M

Style # MT013 | Male

Work Shirt

(Model pictured in Navy Poly)

Pricing

6~10	11~25	26~50	51~99	100+	200+	500+	1000+
\$99	\$74	\$69	\$64	\$59	\$57	\$56	\$53

Sizing

	S	M	L	XL	2X	3X
Chest:	44"	46"	48"	50"	52"	54"
Sleeve:	9"	9.25"	9.5"	9.75"	10"	10.25"
Shoulder:	17"	18"	19"	20"	21"	22"



Pictured in Light Gray Poly

Description:

Classic 2 pocket work shirt designed as a more design-forward option for positions requiring a more strenuous work load. Features 2 front buttoned pockets and a straighter hem that looks cleaner when left untucked. Back vent with mesh lining for increased ventilation and breathability.

Fit:

Regular fit. Runs more like traditional uniform sizing.

Material Options:

(Core) Poly, Poly Cotton, Cotton Oxford

Color Options:

Black, Navy, Charcoal, Light Gray, Chambray. See fabric section for options.

Care Instructions:

Cold, regular wash. Tumble dry on low or lay flat to dry. Natural fading over time. No bleach.





Model is wearing a size S

Style # FT013 | Female

Work Shirt

(Model pictured in Blue Chambray)

Pricing

6~10	11~25	26~50	51~99	100+	200+	500+	1000+
\$99	\$74	\$69	\$64	\$59	\$57	\$56	\$53

Sizing

	XS	S	M	L	XL	2X
Chest:	37"	39"	41"	43"	45"	47"
Sleeve:	7.75"	8"	8.25"	8.5"	8.75"	9"
Shoulder:	15"	16"	17"	18"	19"	20"



Pictured in Black Poly

Description:

Classic 2 pocket work shirt designed as a more design-forward option for positions requiring a more strenuous work load. Features 2 front buttoned pockets and a straighter hem that looks cleaner when left untucked. Back vent with mesh lining for increased ventilation and breathability.

Fit:

Regular fit. Runs more like traditional uniform sizing.

Material Options:

(Core) Poly, Poly Cotton, Cotton Oxford

Color Options:

Black, Navy, Charcoal, Light Gray, Chambray. See fabric section for options.

Care Instructions:

Cold, regular wash. Tumble dry on low or lay flat to dry. Natural fading over time. No bleach.





Navy Poly



Charcoal Poly



Charcoal Poly



Light Gray Poly



Blue Chambray



Charcoal Poly





Model is wearing a size M

Style # UT007 | Unisex

Chore Shirt

(Model pictured in Black Baby Twill)

Pricing

6~10	11~25	26~50	51~99	100+	200+	500+	1000+
\$118	\$75	\$72	\$69	\$64	\$62	\$60	\$58

Sizing

	XS	S	M	L	XL	2X	3X
Chest:	39"	41"	43"	45"	47"	49"	51"
Sleeve:	9.25"	9.5"	9.75"	10"	10.25"	10.5"	10.75"
Shoulder:	17.5"	18.5"	19.5"	20.5"	21.5"	22.5"	23.5"

Description:

Our take on a chore shirt with a wider body and slightly shorter length. Features a more casual notch collar and 2 wide patch pockets along the bottom hem. Great for elevating work heavy positions like Engineer, Gardener, Houseman, Pool Attendant, Server, Bell, Valet, Door.

Fit:

Boxy fit. Intended to be worn looser.

Material Options:

(Core) Cotton Oxford, Chambray, Denim, Cotton Poplin, Poly Cotton
 (Premium) Linen, Linen Blend, Baby Twill

Color Options:

See fabric section for options.

Care Instructions:

Cold, regular wash. Tumble dry on low or lay flat to dry. Natural fading over time. No bleach.



Pictured in Olive Baby Twill





Custom Print Blue & White Stripe Baby Twill

(Collaboration with Woon)



Navy Baby Twill



Charcoal Baby Twill





Charcoal Baby Twill



Olive Baby Twill





Model is wearing a size M

Style # MT022 | Male

Sack Shirt

(Model pictured in Ecrú Cotton Oxford)

Pricing

6~10	11~25	26~50	51~99	100+	200+	500+	1000+
\$99	\$77	\$72	\$67	\$64	\$61	\$59	\$56

Sizing

	S	M	L	XL	2X	3X
Chest:	45"	47"	49"	51"	53"	55"
Sleeve:	11.75"	12"	12.25"	12.5"	12.75"	13"
Shoulder:	19"	20"	21"	22"	23"	24"



Pictured in Flax Linen Blend

Description:

A lighter shirt version built off our Sack Coat. Based on 50's French Sack Coats, this shirt features a boxier fit and 2 pleated cargo front pockets low on the hem with flap detail. Side slits as well for mobility and comfort. Modernized with a slim 1.25" hidden placket covering all but the top button.

Fit:

Boxy cut. Runs more like traditional uniform sizing.

Material Options:

(Core) Cotton Poplin, Cotton Oxford, Chambray, Denim, Poly Cotton, Poly
 (Premium) Linen, Linen Blend

Color Options:

Black, Navy, Gray, White, Ecrú. See fabric section for options.

Care Instructions:

Cold, regular wash. Tumble dry on low or lay flat to dry. Natural fading over time. No bleach.





Model is wearing a size S

Style # FT022 | Female

Sack Shirt

(Model pictured in Red Linen Blend)

Pricing

6~10	11~25	26~50	51~99	100+	200+	500+	1000+
\$99	\$77	\$72	\$67	\$64	\$61	\$59	\$56

Sizing

	XS	S	M	L	XL	2X
Chest:	38"	40"	42"	44"	46"	48"
Sleeve:	10.25"	10.5"	10.75"	11"	11.25"	11.5"
Shoulder:	15"	16"	17"	18"	19"	20"

Description:

A lighter shirt version built off our Sack Coat. Based on 50's French Sack Coats, this shirt features a boxier fit and 2 pleated cargo front pockets low on the hem with flap detail. Side slits as well for mobility and comfort. Modernized with a slim 1.25" hidden placket covering all but the top button.

Fit:

Boxy cut. Runs more like traditional uniform sizing.

Material Options:

(Core) Cotton Poplin, Cotton Oxford, Chambray, Denim, Poly Cotton, Poly
 (Premium) Linen, Linen Blend

Color Options:

Black, Navy, Gray, White, Ecru. See fabric section for options.

Care Instructions:

Cold, regular wash. Tumble dry on low or lay flat to dry. Natural fading over time. No bleach.



Pictured in Red Linen Blend





Flax Linen Blend



Ecru Cotton Oxford



Mid Denim



Blue
Chambray



Model is wearing a size L

Style # MJ002 | Male

Chef Coat

(Model pictured in White Cotton Oxford)

Pricing

6~10	11~25	26~50	51~99	100+	200+	500+	1000+
\$120	\$82	\$78	\$65	\$58	\$55	\$50	\$44

Sizing

	S	M	L	XL	2X	3X	4X
Chest:	47"	49"	51"	53"	55"	57"	59"
Sleeve:	11.25"	11.5"	11.75"	12"	12.25"	12.5"	12.75"
Shoulder:	17.5"	18"	19"	20"	21"	22"	23"

Description:

Made especially for the kitchen, this chef coat features a banded collar and overlay front snap/button closure. Single shoulder pocket measuring 1.5" wide by 5" deep. Adjustable side tabs on either side to cinch if needed.

Fit:

Standard fit. True to size.

Material:

(Core) Poly, Poly Cotton, Cotton Oxford, Chambray
 (Premium) Linen, Linen Blend

Color Options:

Navy, Black, White. See fabric section for options.

Care Instructions:

Cold, regular wash. Tumble dry on low or lay flat to dry.
 Natural fading over time. No bleach.



Pictured in Cloud Poiy





Model is wearing a size S

Style # FJ002 | Female

Chef Coat

(Model pictured in Navy Poly)

Pricing

6~10	11~25	26~50	51~99	100+	200+	500+	1000+
\$120	\$82	\$78	\$65	\$58	\$55	\$50	\$44

Sizing

	XS	S	M	L	XL	2X	3X
Chest:	38"	40"	42"	44"	46"	48"	50"
Sleeve:	10"	10.25"	10.5"	10.75"	11"	11.25"	11.5"
Shoulder:	15"	16"	17"	18"	19"	20"	21"

Description:

Made especially for the kitchen, this chef coat features a banded collar and overlay front snap/button closure. Single shoulder pocket measuring 1.5" wide by 5" deep. Adjustable side tabs on either side to cinch if needed.

Fit:

Standard fit. True to size.

Material:

(Core) Poly, Poly Cotton, Cotton Oxford, Chambray
(Premium) Linen, Linen Blend

Color Options:

Navy, Black, White. See fabric section for options.

Care Instructions:

Cold, regular wash. Tumble dry on low or lay flat to dry.
Natural fading over time. No bleach.



Pictured in Navy Poly





Navy
Poly





White
Cotton Oxford





*Light Blue
Poly*



*Light Gray
Poly*





Model is wearing a size XS

Style # FT017 | Female

Desert Top

(Model pictured in Natural Peachskin Poly)

Pricing

6~10	11~25	26~50	51~99	100+	200+	500+	1000+
\$88	\$69	\$66	\$62	\$58	\$54	\$51	\$49

Sizing

	XS	S	M	L	XL	2X
Chest:	35"	37"	39"	41"	43"	45"
Sleeve:	12.25"	12.5"	12.75"	13"	13.25"	13.5"
Shoulder:	17.5"	18.5"	19.5"	20.5"	21.5"	22.5"

Description:

A stylish yet easy top to wear. A casual piece that can be paired with our Cropped Pant and Elongated Wrap Dress for a very chic look. Features a 3/4" sleeve and boat neck.

Fit:

Relaxed and loose fit

Material:

(Core) Peachskin Poly

Color Options:

See fabric section for options (Peachskin Poly).

Care Instructions:

Cold, regular wash. Tumble dry on low or lay flat to dry. Natural fading over time. No bleach.



Pictured in Mocha Peachskin Poly





Navy
Peachskin Poly

Mocha
Peachskin Poly





Model is wearing a size M

Style # MT008 | Male

Long Sleeve Henley

(Model pictured in Navy w/ Light Blue Placket Cotton Jersey)

Pricing

6~10	11~25	26~50	51~99	100+	200+	500+	1000+
\$67	\$47	\$47	\$39	\$35	\$34	\$32	\$29

Sizing

	S	M	L	XL	2X	3X
Chest:	40"	42"	44"	46"	48"	50"
Sleeve:	26"	26.5"	27"	27.5"	28"	28.5"
Shoulder:	15"	16"	17"	18"	19"	20"

Description:

A classic staple of every wardrobe, this long sleeve henley has a contrast button placket for an added style detail. Slim silhouette for a casual, cool and comfortable look suitable for many positions.

Fit:

Slimmer fit than traditional uniforms. If in doubt go up a size.

Material:

(Core) Cotton Jersey
(Premium) Dri-Fit

Color Options:

Navy, Gray, Heather Gray, Black. See fabric section for options. Tonal plackets also an option.

Care Instructions:

Cold, regular wash. Tumble dry on low or lay flat to dry. Natural fading over time. No bleach.



Pictured in Black w/ Gray Placket Cotton Jersey





Model is wearing a size S

Style # FT008 | Female

Long Sleeve Henley

(Model pictured in Gray w/ Black Placket Cotton Jersey)

Pricing

6~10	11~25	26~50	51~99	100+	200+	500+	1000+
\$67	\$47	\$47	\$39	\$35	\$34	\$32	\$29

Sizing

	XS	S	M	L	XL	2X
Chest:	38"	40"	42"	44"	46"	48"
Sleeve:	25.5"	26"	26.5"	27"	27.5"	28"
Shoulder:	16.5"	17.5"	18.5"	19.5"	20.5"	21.5"

Description:

A classic staple of every wardrobe, this long sleeve henley has a contrast button placket for an added style detail. Slim silhouette for a casual, cool and comfortable look suitable for many positions.

Fit:

Slimmer fit than traditional uniforms. If in doubt go up a size.

Material:

(Core) Cotton Jersey
(Premium) Dri-Fit

Color Options:

Navy, Gray, Heather Gray, Black. See fabric section for options. Tonal plackets also an option.

Care Instructions:

Cold, regular wash. Tumble dry on low or lay flat to dry. Natural fading over time. No bleach.



Pictured in Heather Gray w/ Tonal Placket Cotton Jersey





Model is wearing a size M

Style # MT009 | Male

Short Sleeve Henley

(Model pictured in Black w/ Gray Placket Cotton Jersey)

Pricing

6~10	11~25	26~50	51~99	100+	200+	500+	1000+
\$65	\$45	\$45	\$37	\$33	\$32	\$30	\$27

Sizing

	S	M	L	XL	2X	3X
Chest:	40"	42"	44"	46"	48"	50"
Sleeve:	8.75"	9"	9.25"	9.5"	9.75"	10"
Shoulder:	17.5"	18.5"	19.5"	20.5"	21.5"	22.5"

Description:

A classic staple of every wardrobe, this short sleeve henley has a contrast button placket for an added style detail. Slim silhouette for a casual, cool and comfortable look suitable for many positions.

Fit:

Slimmer fit than traditional uniforms. If in doubt go up a size.

Material:

(Core) Cotton Jersey
(Premium) Dri-Fit

Color Options:

Navy, Gray, Heather Gray, Black. See fabric section for options. Tonal plackets also an option.

Care Instructions:

Cold, regular wash. Tumble dry on low or lay flat to dry. Natural fading over time. No bleach.



Pictured in Navy w/ Light Blue Placket Cotton Jersey





Model is wearing a size S

Style # FT009 | Female

Short Sleeve Henley

(Model pictured in Gray w/ Black Placket Cotton Jersey)

Pricing

6~10	11~25	26~50	51~99	100+	200+	500+	1000+
\$65	\$45	\$45	\$37	\$33	\$32	\$30	\$27

Sizing

	XS	S	M	L	XL	2X
Chest:	38"	40"	42"	44"	46"	48"
Sleeve:	8.5"	8.75"	9"	9.25"	9.5"	9.75"
Shoulder:	16.5"	17.5"	18.5"	19.5"	20.5"	21.5"



Pictured in Gray w/ Black Placket Cotton Jersey

Description:

A classic staple of every wardrobe, this long sleeve henley has a contrast button placket for an added style detail. Slim silhouette for a casual, cool and comfortable look suitable for many positions.

Fit:

Slimmer fit than traditional uniforms. If in doubt go up a size.

Material:

(Core) Cotton Jersey
(Premium) Dri-Fit

Color Options:

Navy, Gray, Heather Gray, Black. See fabric section for options. Tonal plackets also an option.

Care Instructions:

Cold, regular wash. Tumble dry on low or lay flat to dry. Natural fading over time. No bleach.





*Navy w/ Light Blue Placket
Cotton Jersey*



*Gray w/ Black Placket
Cotton Jersey*





Model is wearing a size M

Style # MT012 | Male

Polo

(Model pictured in White Pique)

Pricing

6~10	11~25	26~50	51~99	100+	200+	500+	1000+
\$35	\$29	\$28	\$28	\$24	\$23	\$21	\$17

Sizing

	S	M	L	XL	2X	3X
Chest:	39"	41"	43"	45"	47"	49"
Sleeve:	8.25"	8.5"	8.75"	9"	9.25"	9.5"
Shoulder:	19"	20"	21"	22"	23"	24"



Pictured in Navy Pique

Description:

A more stylish take on the traditional polo shirt, this piece features a lightweight jersey fabrication, short sleeves, self collar and tonal 3 button placket.

Fit:

Standard fit

Material:

(Core) Pique

Color Options:

Black, Navy, White

Care Instructions:

Cold, regular wash. Tumble dry on low or lay flat to dry. Natural fading over time. No bleach.





Model is wearing a size S

Style # FT012 | Female

Polo

(Model pictured in Navy Pique)

Pricing

6~10	11~25	26~50	51~99	100+	200+	500+	1000+
\$35	\$29	\$28	\$28	\$24	\$23	\$21	\$17

Sizing

	S	M	L	XL	2X
Chest:	38"	40"	42"	44"	46"
Sleeve:	8"	8.25"	8.5"	8.75"	9"
Shoulder:	14.5"	15.5"	16.5"	17.5"	18.5"



Pictured in Black Pique

Description:

A more stylish take on the traditional polo shirt, this piece features a lightweight jersey fabrication, short sleeves, self collar and tonal 3 button placket.

Fit:

Standard fit

Material:

(Core) Pique

Color Options:

Black, Navy, White

Care Instructions:

Cold, regular wash. Tumble dry on low or lay flat to dry. Natural fading over time. No bleach.





Model is wearing a size M

Style # MT010 | Male

Short Sleeve Crewneck T-Shirt

(Model pictured in Black Cotton Jersey)

Pricing

6~10	11~25	26~50	51~99	100+	200+	500+	1000+
\$16	\$16	\$16	\$16	\$14	\$14	\$13	\$12

Sizing

	S	M	L	XL	2X	3X
Chest:	38"	40"	42"	44"	46"	48"
Sleeve:	7.75"	8"	8.25"	8.5"	8.75"	9"
Shoulder:	16.5"	17.5"	18.5"	19.5"	20.5"	21.5"

Description:

A well-cut T-shirt is an everyday essential, and it doesn't get better than this silhouette. Crafted from soft cotton jersey for a fit that's perfectly in between a slim and a regular cut. Silkscreen or embroidery available.

Fit:

Slimmer fit than traditional uniforms. If in doubt go up a size.

Material:

(Core) Cotton Jersey

Color Options:

Black, Gray, Navy, White

Care Instructions:

Cold, regular wash. Tumble dry on medium. Natural fading over time.



Pictured in White Cotton Jersey





Model is wearing a size S

Style # FT010 | Female

Short Sleeve Crewneck T-Shirt

(Model pictured in Gray Cotton Jersey)

Pricing

6~10	11~25	26~50	51~99	100+	200+	500+	1000+
\$16	\$16	\$16	\$16	\$14	\$14	\$13	\$12

Sizing

	XS	S	M	L	XL	2X
Chest:	30"	32"	34"	36"	38"	40"
Sleeve:	6.75"	7"	7.25"	7.5"	7.75"	8"
Shoulder:	13"	14"	15"	16"	17"	18"



Pictured in Navy Cotton Jersey

Description:

A well-cut T-shirt is an everyday essential, and it doesn't get better than this silhouette. Crafted from soft cotton jersey for a fit that's perfectly in between a slim and a regular cut. Silkscreen or embroidery available.

Fit:

Slimmer fit than traditional uniforms. If in doubt go up a size.

Material:

(Core) Cotton Jersey

Color Options:

Black, Gray, Navy, White

Care Instructions:

Cold, regular wash. Tumble dry on medium. Natural fading over time.





*White w/ Red Embroidery
Cotton Jersey
extra embroidery charge





*White w/ Contrast Pocket
Cotton Jersey
extra detail charge





Model is wearing a size XS

Style # UT008 | Unisex

Unisex SS T-Shirt

(Model pictured in White Cotton Jersey)

Pricing

6~10	11~25	26~50	51~99	100+	200+	500+	1000+
\$16	\$16	\$16	\$16	\$14	\$14	\$13	\$12

Sizing

	XS	S	M	L	XL	2X	3X
Chest:	30"	34"	38"	42"	46"	50"	54"
Sleeve:	8"	8.25"	8.5"	8.75"	9"	9.25"	9.5"
Length:	27"	28"	29"	30"	32"	34"	36"

Description:

A unisex option for T-shirts. Slimmer cut. An easier option if you want to wear a little looser and don't want to split the order in half between male and female silhouettes.

Fit:

Slimmer fit than traditional uniforms. For females, size down from your normal female size.

Material:

(Core) Cotton Jersey

Color Options:

Black, Navy, White

Care Instructions:

Cold, regular wash. Tumble dry on medium. Natural fading over time.



Pictured in White Cotton Jersey





Model is wearing a size XL

Style # MT011 | Male

Boxy T-Shirt

(Model pictured in White Cotton Jersey)

Pricing

6~10	11~25	26~50	51~99	100+	200+	500+	1000+
\$82	\$59	\$58	\$49	\$47	\$45	\$41	\$37

Sizing

	S	M	L	XL	2X	3X
Chest:	44"	46"	48"	50"	52"	54"
Sleeve:	8.25"	8.5"	8.75"	9"	9.25"	9.5"
Shoulder:	24"	25"	26"	27"	28"	29"

Description:

This T-Shirt is a boxier cut than our slim cut. It features a slightly larger neck opening, longer sleeves with a dropped shoulder. A much more modern silhouette that is meant to be worn oversized. Silkscreen or embroidery available.

Fit:

Runs very large and boxy. General recommendation is to size down 1-2 sizes from standard T-Shirt size.

Material:

(Core) Cotton Jersey

Color Options:

Black, Gray, Navy, White. See fabric section for options.

Care Instructions:

Cold, regular wash. Tumble dry on medium. Natural fading over time.



Pictured in White Cotton Jersey





Model is wearing a size XS

Style # FT011 | Female

Boxy T-Shirt

(Model pictured in White Cotton Jersey)

Pricing

6~10	11~25	26~50	51~99	100+	200+	500+	1000+
\$82	\$59	\$58	\$49	\$47	\$45	\$41	\$37

Sizing

	XS	S	M	L	XL	2X
Chest:	38"	40"	42"	44"	46"	48"
Sleeve:	7.25"	7.5"	7.75"	8"	8.25"	8.5"
Shoulder:	20.5"	21.5"	22.5"	23.5"	24.5"	25.5"

Description:

This T-Shirt is a boxier cut than our slim cut. It features a slightly larger neck opening, longer sleeves with a dropped shoulder. A much more modern silhouette that is meant to be worn oversized. Silkscreen or embroidery available.

Fit:

Runs very large and boxy. General recommendation is to size down 1-2 sizes from standard T-Shirt size.

Material:

(Core) Cotton Jersey

Color Options:

Black, Gray, Navy, White. See fabric section for options.

Care Instructions:

Cold, regular wash. Tumble dry on medium. Natural fading over time.



Pictured in White Cotton Jersey





Model is wearing a size XS

Style # UT004 | Unisex

Sur Shirt

(Model pictured in Ivory Poly)

Pricing

6~10	11~25	26~50	51~99	100+	200+	500+	1000+
\$110	\$85	\$77	\$75	\$70	\$67	\$65	\$57

Sizing

	XS	S	M	L	XL	2X	3X
Chest:	39"	41"	43"	45"	47"	50"	52"
Sleeve:	8.5"	9"	9.5"	10"	10.5"	11"	11.5"
Shoulder:	19.5"	20.5"	21.5"	22.5"	23.5"	24.5"	25.5"

Description:

A wrap style shirt that makes it a very size-inclusive silhouette. Very easy to wear with a casual sophistication. Features a notch collar + interior and exterior ties making it easy to adjust for any size and fit. Meant to be worn with a looser tie.

Fit:

Looser fit. Ties make this style adjustable for all body types. Women should size down 1 size.

Material:

(Core) Poly
(Premium) Linen, Linen Blend

Color Options:

Black, Gray, Navy, White. See fabric section for options.

Care Instructions:

Cold, regular wash. Tumble dry on low or lay flat to dry. Natural fading over time. No bleach.



Pictured in White Poly





*Black
Poly*



*Navy
Poly*



*Navy
Linen*



*Natural
Linen*





*Black
Poly*



*Navy
Poly*





*Natural
Linen*





Model is wearing a size XS

Style # FT015 | Female

Tunic Top

(Model pictured in Navy Poly Blend)

Pricing

6~10	11~25	26~50	51~99	100+	200+	500+	1000+
\$88	\$63	\$61	\$52	\$47	\$45	\$39	\$37

Sizing

	XS	S	M	L	XL	2X
Chest:	46"	48"	50"	52"	54"	56"
Sleeve Opening:	17"	17.5"	18"	18.5"	19"	19.5"
Waist:	49"	51"	53"	55"	57"	59"

Description:

Made specifically for more active positions like housekeeping, this lightweight, comfortable tunic top is breezy and easy to move around in. Designed with a larger neck and sleeve opening, it's durable yet supremely comfortable. Made to be worn oversized and flowy. 2 large hand patch pockets.

Fit:

Runs very large and flowy. General recommendation is to size down 1-2 sizes from standard T-Shirt size.

Material:

(Core) Poly, Poly Cotton
 (Premium) Linen, Linen Blend

Color Options:

Black, Gray, Navy, White. See fabric section for options.

Care Instructions:

Cold, regular wash. Tumble dry on low or lay flat to dry. Natural fading over time. No bleach.



Pictured in Oatmeal Poly Blend





Model is wearing a size S

Style # FT023 | Female

Wrap Tunic Top

(Model pictured in Navy Poly)

Pricing

6~10	11~25	26~50	51~99	100+	200+	500+	1000+
\$102	\$76	\$69	\$63	\$60	\$59	\$53	\$49

Sizing

	XS	S	M	L	XL	2X
Chest:	36"	38"	40"	42"	44"	46"
Sleeve:	8.75"	9"	9.25"	9.5"	9.75"	10"
Shoulder:	14"	15"	16"	17"	18"	19"

Description:

This wrap style features adjustable ties allowing this style to fit a wide range of body types. Contrasting short sleeve cuffs and a pop-over collar.

Fit:

Standard

Material:

(Core) Poly

Color Options:

Black, Gray, Navy. See fabric section for options.

Care Instructions:

Cold, regular wash. Tumble dry on low or lay flat to dry. Natural fading over time. No bleach.



Pictured in Gray Poly





Gray
Poly





Model is wearing a size S

Style # FT014 | Female

3/4 Sleeve T-Shirt w/ Sleeve Buttons

(Model pictured in Navy & White Striped Cotton Jersey)

Pricing

6~10	11~25	26~50	51~99	100+	200+	500+	1000+
\$86	\$62	\$62	\$54	\$44	\$42	\$39	\$33

Sizing

	XS	S	M	L	XL	2X
Chest:	36"	38"	40"	42"	44"	46"
Sleeve:	18.75"	19"	19.25"	19.5"	19.75"	20"
Shoulder:	14"	15"	16"	17"	18"	19"

Description:

Made specifically for more active positions, this lightweight, comfortable crewneck T-Shirt has extra added epaulet and sleeve buttons for easy and clean rolling. Can be made in long sleeve as well.

Fit:

Standard fit

Material:

(Core) Cotton Jersey

Color Options:

Black, Gray, Navy, White, Navy & White Striped. See fabric section for options.

Care Instructions:

Cold, regular wash. Tumble dry on medium. Natural fading over time. No bleach.



Pictured in Navy & White Striped Cotton Jersey





*Navy & White Striped
Cotton Jersey*





Model is wearing a size S

Style # FT018 | Female

Tunic Top with Ties

(Model pictured in Striped Cotton Poplin)

Pricing

6~10	11~25	26~50	51~99	100+	200+	500+	1000+
\$137	\$75	\$73	\$70	\$68	\$62	\$53	\$48

Sizing

	XS	S	M	L	XL	2X
Chest:	45"	47"	49"	51"	53"	55"
Sleeve:	25"	25.5"	26"	26.5"	27"	27.5"
Shoulder:	16.5"	17.5"	18.5"	19.5"	20.5"	21.5"

Description:

A casual top that is meant to be worn loose and flowy. This piece brings together the look of a button down shirt with a tunic, all pulled into one unique piece with the criss cross ties from the neckline to mid chest. There's a subtle stitching on the bottom fourth of the piece that elongates it to give the top its tunic look. Can be worn with or without pants with a body suit.

Fit:

Runs on the larger side

Material:

(Core) Cotton Poplin, Poly Cotton
(Premium) Linen, Linen Blend

Color Options:

Black, Gray, Navy, White, Striped. See fabric section for options.

Care Instructions:

Cold, regular wash. Tumble dry on low or lay flat to dry. Natural fading over time. No bleach.



Pictured in Striped Cotton Poplin





*Striped
Cotton Poplin*





Model is wearing a size S

Style # FT026 | Female

Loose Tank

(Model pictured in White Cotton Jersey)

Pricing

6~10	11~25	26~50	51~99	100+	200+	500+	1000+
\$78	\$53	\$53	\$39	\$34	\$32	\$29	\$28

Sizing

	XS	S	M	L	XL	2X
Chest:	35"	37"	39"	41"	43"	45"
Sleeve:	N/A	N/A	N/A	N/A	N/A	N/A
Shoulder:	N/A	N/A	N/A	N/A	N/A	N/A

Description:

A casual backless tank top with wide arms openings. Made especially for pools and outdoor areas that require just a little tasteful attitude.

Fit:

Standard fit

Material:

(Core) Cotton Jersey

Color Options:

Black, Gray, Navy, White & Navy Striped. See fabric section for options.

Care Instructions:

Cold, regular wash. Tumble dry on medium. Natural fading over time. No bleach.



Pictured in White & Navy Striped Cotton Jersey





*White & Navy Striped
Cotton Jersey*



OUTERWEAR





Model is wearing a size M

Style # MJ001 | Male

Workwear Coat

(Model pictured in Ecrú Cotton Twill)

Pricing

6~10	11~25	26~50	51~99	100+	200+	500+	1000+
\$123	\$99	\$89	\$83	\$69	\$65	\$55	\$45

Sizing

	S	M	L	XL	2X	3X
Chest:	47"	49"	51"	53"	55"	57"
Sleeve:	21.75"	22"	22.25"	22.5"	22.75"	23"
Shoulder:	17.5"	18.5"	19.5"	20.5"	21.5"	22.5"

Description:

Modernizing the classic sack coat, our Workwear Coat is updated with clean lines and a looser fit that hangs straight down from the shoulders for a boxy fit. Easy to wear and flattering to most body types with no tailoring necessary. Small details like pen loops and oversized pockets function well on the job. 7/8" sleeve.

Fit:

Runs 1/2 size larger than standard fit. The fit is intended to run large, but can be sized down for a more fitted look.

Material:

(Core) Cotton Twill, Cotton Canvas, Denim

Color Options:

Navy, Olive, British Khaki, Railroad Stripe, Ecrú, Black. See fabric section for options.

Care Instructions:

Cold, regular wash. Tumble dry on low or lay flat to dry. Natural fading over time. No bleach.



Pictured in Railroad Stripe Denim





Model is wearing a size S

Style # FJ001 | Female

Workwear Coat

(Model pictured in Navy Cotton Twill)

Pricing

6~10	11~25	26~50	51~99	100+	200+	500+	1000+
\$123	\$99	\$89	\$83	\$69	\$65	\$55	\$45

Sizing

	XS	S	M	L	XL	2X
Chest:	39"	41"	43"	45"	47"	49"
Sleeve:	20.75"	21"	21.25"	21.5"	21.75"	22"
Shoulder:	16.5"	17.5"	18.5"	19.5"	20.5"	21.5"

Description:

Modernizing the classic sack coat, our Workwear Coat is updated with clean lines and a looser fit that hangs straight down from the shoulders for a boxy fit. Easy to wear and flattering to most body types with no tailoring necessary. Small details like pen loops and oversized pockets function well on the job. 7/8" sleeve.

Fit:

Runs 1/2 size larger than standard fit. The fit is intended to run large, but can be sized down for a more fitted look.

Material:

(Core) Cotton Twill, Cotton Canvas, Denim

Color Options:

Navy, Olive, British Khaki, Railroad Stripe, Ecrú, Black. See fabric section for options.

Care Instructions:

Cold, regular wash. Tumble dry on low or lay flat to dry. Natural fading over time. No bleach.



Pictured in Olive Cotton Twill





*Navy
Cotton Twill*



*Railroad Stripe
Denim*



*Olive
Cotton Twill*



*Ecru
Cotton Twill*





*Denim
Railroad Stripe*





*Black
Cotton Twill*



*Ecrú
Cotton Twill*



*Olive
Cotton Twill*



*British khaki
Cotton Twill*





Model is wearing a size M

Style # UJ007 | Unisex

Sack Coat

(Model pictured in Olive Cotton Twill)

Pricing

6~10	11~25	26~50	51~99	100+	200+	500+	1000+
\$238	\$127	\$109	\$99	\$98	\$94	\$89	\$87

Sizing

	XS	S	M	L	XL	2X	3X
Chest:	38"	40"	42"	44"	46"	48"	50"
Sleeve:	23"	23.5"	24"	24.5"	25"	25.5"	26"
Shoulder:	17"	18"	19"	20"	21"	22"	23"
Length:	27"	27.5"	28"	28.5"	29"	29.5"	30"

Description:

Based off 50s French workwear sack coats, our version is similarly boxy and loose featuring 3 outer pockets and 1 interior pocket. A beautiful layering piece. Recommend stone-washing treatment for that worn-in look.

Fit:

Boxy and loose

Material:

(Core) Cotton Twill, Cotton Canvas

(Premium) Stone Washed (added treatment to soften)

Color Options:

Navy, Black, Ecrú, Olive, Railroad Denim, Charcoal.

See fabric section for options.

Care Instructions:

Cold, regular wash. Tumble dry on low or lay flat to dry.

Natural fading over time. No bleach.



Pictured in Navy Cotton Twill





Navy
Cotton Twill



Ecru
Cotton Twill



Terracotta
Cotton Twill





*British Khaki
Cotton Twill*



*Ecru
Cotton Twill*



*Olive
Cotton Twill*



*Terracotta
Cotton Twill*



Style # UJ012 | Unisex

Metier Coat

(Model pictured in Ecu Cotton Oxford)



Pricing

6~10	11~25	26~50	51~99	100+	200+	500+	1000+
\$155	\$105	\$95	\$88	\$85	\$83	\$78	\$68

Sizing

	XS	S	M	L	XL	2X	3X
Chest:	42"	44"	46"	48"	50"	52"	54"
Sleeve:	23"	23.25"	23.5"	23.75"	24"	24.25"	24.5"
Shoulder:	17.5"	18.5"	19.5"	20.5"	21.5"	22.5"	23.5"
Length:	30"	30.5"	31"	31.5"	32"	32.5"	33"

Description:

This coat was originally designed with a Michelin Star chef as a chef coat. It is a sleek hybrid of a chef coat, Cucinelli shirt, and 50's sack coat. It features a sleek, straight body, elongated length, and 3 patch pockets. Versatile style made for in and out the kitchen for various positions.

Fit:

Loose and long

Material:

(Core) Cotton Oxford
(Premium) Dyed

Color Options:

Navy, Black, Ecu, White. See fabric section for options.

Care Instructions:

Cold, regular wash. Tumble dry on low or lay flat to dry. Natural fading over time. No bleach.



Pictured in Navy Cotton Oxford





*Black
Cotton Oxford*





*Ecru
Cotton Twill*



*Navy
Cotton Twill*



*British Khaki
Cotton Twill*





Model is wearing a size M

Style # UJ001 | Unisex

Bomber Jacket, Standard Lining

(Model pictured in Navy Nylon)

Pricing

6~10	11~25	26~50	51~99	100+	200+	500+	1000+
\$215	\$181	\$169	\$161	\$151	\$145	\$135	\$130

Sizing

	XS	S	M	L	XL	2X	3X
Chest:	45"	47"	49"	51"	53"	55"	57"
Sleeve:	31.5"	32"	32.5"	33"	33.5"	34"	34.5"
Length:	26.5"	27"	27.5"	28"	28.5"	29"	29.5"

Description:

Classic bomber jacket with ribbed collar and cuff details. Slim silhouette with 2 exterior hand pockets. An additional concealed inside pocket. This version is lined with nylon for more temperate climates.

Fit:

Standard fit

Material:

(Core) Nylon, Cotton Canvas, Cotton Twill
(Premium) Aviator Nylon

Color Options:

Navy, Black. See fabric section for options.

Care Instructions:

Dry Clean Only (Nylon). Cold wash, tumble dry medium (Cottons). No bleach.



Pictured in Navy Nylon





Model is wearing a size M

Style # UJ002 | Unisex

Bomber Jacket, Sherpa Lining

(Model pictured in Black Nylon)

Pricing

6~10	11~25	26~50	51~99	100+	200+	500+	1000+
\$225	\$191	\$179	\$171	\$161	\$155	\$145	\$140

Sizing

	XS	S	M	L	XL	2X	3X
Chest:	45"	47"	49"	51"	53"	55"	57"
Sleeve:	31.5"	32"	32.5"	33"	33.5"	34"	34.5"
Length:	26.5"	27"	27.5"	28"	28.5"	29"	29.5"

Description:

Classic bomber jacket with ribbed collar and cuff details. Slim silhouette with 2 exterior hand pockets. An additional concealed inside pocket. This version is lined in sherpa throughout the body for colder climates.

Fit:

True to size

Material:

(Core) Nylon, Cotton Canvas, Cotton Twill
(Premium) Aviator Nylon

Color Options:

Navy, Black. See fabric section for options.

Care Instructions:

Dry Clean Only (Nylon). Cold wash, tumble dry medium (Cottons). No bleach.



Pictured in Black Nylon





Navy Cotton Canvas



Olive Cotton Canvas





*Black
Nylon*



*Navy
Nylon*



*Moroccan Blue
Cotton Canvas*





*Black Nylon
Sherpa Lining*



*Olive
Cotton Canvas*





Model is wearing a size S

Style # UJ006 | Unisex

Kimono Coat

(Model pictured in Stone Washed Navy Cotton Canvas)

Pricing

6~10	11~25	26~50	51~99	100+	200+	500+	1000+
\$278	\$114	\$94	\$86	\$75	\$69	\$63	\$53

Sizing

	XS	S	M	L	XL	2X	3X
Chest:	42.5"	44.5"	46.5"	48.5"	50.5"	52.5"	54.5"
Sleeve:	14.5"	14.75"	15"	15.25"	15.5"	15.75"	16"
Shoulder:	23.5"	24.5"	25.5"	26.5"	27.5"	28.5"	29.5"
Length:	32.5"	33"	33.5"	34"	34.5"	35"	35.5"



Pictured in Indigo Linen Blend

Description:

A modern reinterpretation of a kimono jacket. A unisex style that can work on all body types depending on the material chosen. Designed to be worn oversized as a layering piece with no tailoring required. 2 large patch pockets and self fabric belt with side seam opening.

Fit:

Loose fitting

Material:

(Core) Cotton Canvas, Cotton Twill, Cotton Oxford
(Premium) Linen, Linen Blend

Color Options:

Navy, Black, Ecu. See fabric section for options.

Care Instructions:

Cold, regular wash. Tumble dry on low or lay flat to dry. Natural fading over time. No bleach.





Navy
Cotton Canvas



Ecru
Cotton Twill



Indigo
Linen Blend



Navy
Cotton Canvas





Dark Denim





Black
Stone Washed Cotton Twill
(Elevated version. Inquire about specifics)





Model is wearing a size S

Style # UJ003 | Unisex

Kimono Duster

(Model pictured in Custom Floral Rayon Crepe)

Pricing

6~10	11~25	26~50	51~99	100+	200+	500+	1000+
\$159	\$119	\$99	\$94	\$85	\$75	\$67	\$59

Sizing

	XS	S	M	L	XL	2X	3X
Chest:	52"	54"	56"	58"	60"	62"	64"
Sleeve:	10.75"	11"	11.25"	11.5"	11.75"	12"	12.25"
Shoulder:	28"	29"	30"	31"	32"	33"	34"
Length:	38.5"	39"	39.5"	40"	40.5"	41"	41.5"



Pictured in Navy Linen

Description:

A modern reinterpretation of a kimono jacket. A unisex style that can work on all body types depending on the material chosen. Designed to be worn oversized as a layering piece with no tailoring required. 2 large patch pockets.

Fit:

Loose fitting and flowy

Material:

(Core) Cotton Oxford

(Premium) Crepe de Chine, Linen, Linen Blend

Color Options:

Navy, Black, Cream. See fabric section for options.

Care Instructions:

Cold, regular wash. Tumble dry on low or lay flat to dry. Natural fading over time. No bleach.





Ecrú Cotton Oxford



Indigo Linen Blend



Ecrú Cotton Oxford





Model is wearing a size M

Style # UJ010 | Unisex

Quilted Jacket

(Model pictured in Off White Baby Twill)

Pricing

6~10	11~25	26~50	51~99	100+	200+	500+	1000+
\$235	\$164	\$159	\$145	\$135	\$129	\$125	\$109

Sizing

	XS	S	M	L	XL	2X	3X
Chest:	53"	55"	57"	59"	61"	63"	65"
Sleeve:	21.5"	22"	22.5"	23"	23.5"	24"	24.5"
Shoulder:	20.25"	21.25"	22.25"	23.25"	24.25"	25.25"	26.25"
Length:	30"	30.5"	31"	31.5"	32"	32.5"	33"

Description:

Inspired by the lining of military jackets, a beautiful layering piece for the in-between seasons. Features 2 large patch pockets big enough for phones or keys for valet. Heavy ribbed cuffs and 8oz poly filler to keep heat in for warmth and easy care. Lining, ribbing, and front placket can all be tonal or contrast for added pops of color. Great, non-fussy layering piece.

Fit:

Oversized. Boxy cut. Falls at hip (men) mid-thigh for women. Women size down 1 size.

Material:

(Core) Baby Twill

Color Options:

Black, Navy, White. See fabric section for options.

Care Instructions:

Cold, regular wash. Tumble dry on low or lay flat to dry. Natural fading over time. No bleach.



Pictured in Navy w/ Khaki Baby Twill





Black Baby Twill



*Navy w/ Khaki
Baby Twill*



*Off White w/ Cream
Baby Twill*





Black Baby Twill



*Navy w/ Khaki
Baby Twill*



*Off White w/ Cream
Baby Twill*





Model is wearing a size S

Style # UJ011 | Unisex

Quilted Coat

(Model pictured in Black Baby Twill)

Pricing

6~10	11~25	26~50	51~99	100+	200+	500+	1000+
\$240	\$169	\$164	\$149	\$139	\$124	\$119	\$104

Sizing

	XS	S	M	L	XL	2X	3X
Chest:	53"	55"	57"	59"	61"	63"	65"
Sleeve:	21.5"	22"	22.5"	23"	23.5"	24"	24.5"
Shoulder:	20.25"	21.25"	22.25"	23.25"	24.25"	25.25"	26.25"
Length:	40"	40.5"	41"	41.5"	42"	42.5"	43"



Pictured in Black Baby Twill

Description:

Inspired by the lining of military jackets, this longer version of the Quilted Jacket is a beautiful layering piece for the in-between seasons. Features 2 large patch pockets big enough for phones or keys for valet. Heavy ribbed cuffs and 8oz poly filler to keep heat in for warmth and easy care. Lining, ribbing, and front placket can all be tonal or contrast for added pops of color. Great, non-fussy layering piece.

Fit:

Oversized. Boxy cut. Falls at mid-thigh for men lower-thigh for women. Women size down 1 size.

Material:

(Core) Baby Twill

Color Options:

Black, Navy, White. See fabric section for options.

Care Instructions:

Cold, regular wash. Tumble dry on low or lay flat to dry. Natural fading over time. No bleach.





Model is wearing a size 2X

Style # UT002 | Unisex

Oversized Sweatshirt

(Model pictured in Cream French Terry)

Pricing

6~10	11~25	26~50	51~99	100+	200+	500+	1000+
\$99	\$81	\$79	\$76	\$66	\$61	\$56	\$49

Sizing

	XS	S	M	L	XL	2X	3X
Chest:	42"	44"	46"	48"	50"	52"	54"
Sleeve:	24"	24.5"	25"	25.5"	26"	26.5"	27"
Shoulder:	20.5"	21.5"	22.5"	23.5"	24.5"	25.5"	26.5"
Length:	28"	28.5"	29"	29.5"	30"	30.5"	31"

Description:

An oversized sweatshirt with a dropped shoulder. This silhouette is designed to be worn a bit larger than normal and features contrasting ribbing at the neck and cuffs. A "triangle" stitch detail underneath the neckline finishes off this modern sweatshirt. Silkscreen or embroidery available.

Fit:

For men, true to size. For women, general rule is to size down from usual women's size.

Material:

(Core) French Terry, Cotton Jersey

Color Options:

White, Cream, Black, Gray, Navy. See fabric section for options.

Care Instructions:

Cold, regular wash. Tumble dry on medium. Natural fading over time.



Pictured in Cream French Terry





*Cream
French Terry*



Model is wearing a size XS

Style # UT001 | Unisex

Crewneck Sweatshirt

(Model pictured in White Cotton Jersey)

Pricing

6~10	11~25	26~50	51~99	100+	200+	500+	1000+
\$41	\$37	\$37	\$32	\$29	\$28	\$25	\$21

Sizing

	XS	S	M	L	XL	2X	3X
Chest:	41"	43"	45"	47"	49"	51"	53"
Sleeve:	22"	22.5"	23"	23.5"	24"	24.5"	25"
Shoulder:	22"	23"	24"	25"	26"	27"	28"

Description:

An update on the classic crewneck sweatshirt in a comfortable soft fleece designed for warmth and breathability. Updated with a drop-shoulder seam, ribbed cuffs and waistband, and a unisex retail fit intended to streamline ordering. Silkscreen or embroidery available.

Fit:

For men, true to size. For women, general rule is to size down from usual women's size.

Material:

(Core) Cotton Jersey

Color Options:

White, Navy, Black, Gray. See fabric section for options.

Care Instructions:

Cold, regular wash. Tumble dry on medium. Natural fading over time.



Pictured in Gray Cotton Jersey







Model is wearing a size M

Style # UT003 | Unisex

Hoodie

(Model pictured in Navy Cotton Jersey)

Pricing

6~10	11~25	26~50	51~99	100+	200+	500+	1000+
\$60	\$49	\$47	\$46	\$44	\$42	\$39	\$31

Sizing

	XS	S	M	L	XL	2X	3X
Chest:	37"	39"	41"	43"	45"	47"	49"
Sleeve:	28"	28.5"	29"	29.5"	30"	30.5"	31"
Shoulder:	16"	17"	18"	19"	20"	21"	22"

Description:

Classic hoodie with kangaroo pocket. The shoulder is slightly dropped. It's great as a layering piece. Silkscreen or embroidery available.

Fit:

For men, true to size. For women, general rule is to size down from usual women's size.

Material:

(Core) Cotton Jersey

Color Options:

Black, Gray, Navy, White. See fabric section for options.

Care Instructions:

Cold, regular wash. Tumble dry on medium. Natural fading over time.



Pictured in Gray Cotton Jersey





Black Jersey



White Cotton Jersey



Navy Jersey



Black Cotton Jersey



White Jersey

A.



Layering options

A. Two Button Blazer, MJ003

B. Patch Pocket Blazer, FJ004

C. Workwear Coat, MJ001

C.



B.



Style # UJ009 | Unisex

Rain Jacket

(Model pictured in Black Nylon)

Pricing

6~10	11~25	26~50	51~99	100+	200+	500+	1000+
\$219	\$134	\$130	\$124	\$112	\$104	\$94	\$91

Sizing

	XS	S	M	L	XL	2X	3X
Chest:	48"	50"	52"	54"	56"	58"	60"
Sleeve:	21"	21.5"	22"	22.5"	23"	23.5"	24"
Shoulder:	22.5"	23.5"	24.5"	25.5"	26.5"	27.5"	28.5"
Length:	28"	28.5"	29"	29.5"	30"	30.5"	31"



Model is wearing a size M

Description:

A hooded Rain Jacket with slightly exaggerated sleeves. The shoulder is slightly dropped. Unlined and meant to be worn flowy. Elastic cuffs. 2 slotted side welt pockets that are deep and capable of fitting phones, keys, wallet, etc. Full zipper closure. 3 panel fitted hood.

Fit:

Oversized. Loose and boxy to accommodate as a layering piece. Women to size down 1 size.

Material:

(Core) Nylon
(Premium) Aviator Nylon

Color Options:

Navy, Black. See fabric section for options (Aviator Nylon).

Care Instructions:

Cold, regular wash. Tumble dry on low or lay flat to dry. Natural fading over time. No bleach.



Pictured in Olive Aviator Nylon





Olive
Aviator Nylon





Olive
Aviator Nylon





Model is wearing a size M

Style # UJ008 | Unisex

Raincoat

(Model pictured in Navy Aviator Nylon)

Pricing

6~10	11~25	26~50	51~99	100+	200+	500+	1000+
\$224	\$139	\$135	\$129	\$117	\$109	\$99	\$96

Sizing

	XS	S	M	L	XL	2X	3X
Chest:	48"	50"	52"	54"	56"	58"	60"
Sleeve:	21"	21.5"	22"	22.5"	23"	23.5"	24"
Shoulder:	22.5"	23.5"	24.5"	25.5"	26.5"	27.5"	28.5"
Length:	41.5"	42"	42.5"	43"	43.5"	44"	44.5"



Pictured in Navy Aviator Nylon

Description:

A hooded Raincoat with slightly exaggerated sleeves and an elongated length. The shoulder is slightly dropped. Unlined and meant to be worn flowy. Elastic cuffs. 2 slotted side welt pockets that are deep and capable of fitting phones, keys, wallet, etc. Full zipper closure. 3 panel fitted hood.

Fit:

Oversized. Loose and boxy to accommodate as a layering piece. Women to size down 1 size.

Material:

(Core) Nylon
(Premium) Aviator Nylon

Color Options:

Navy, Black. See fabric section for options (Aviator Nylon)

Care Instructions:

Cold, regular wash. Tumble dry on low or lay flat to dry. Natural fading over time. No bleach.





Navy
Aviator Nylon





*Navy
Aviator Nylon*





Model is wearing a size M

Style # UJ004 | Unisex

Trench Coat

(Model pictured in White Cotton Twill)

Pricing

6~10	11~25	26~50	51~99	100+	200+	500+	1000+
\$189	\$149	\$139	\$129	\$103	\$89	\$79	\$69

Sizing

	XS	S	M	L	XL	2X	3X
Chest:	47"	49"	51"	53"	55"	57"	59"
Sleeve:	23"	23.5"	24"	24.5"	25"	25.5"	26"
Shoulder:	18"	19"	20"	21"	22"	23"	24"
Length:	43"	43.5"	44"	44.5"	45"	45.5"	46"



Pictured in White Cotton Twill

Description:

Our version of a trench coat streamlined with modern lines throughout. Features a hidden button placket to keep the silhouette clean and minimal. Depending on the material chosen, this piece can be good for cold or temperate climates.

Fit:

Standard fit

Material:

(Core) Cotton Oxford, Cotton Twill

Color Options:

Navy, Black, Off White, White. See fabric section for options.

Care Instructions:

Cold, regular wash. Tumble dry on low or lay flat to dry. Natural fading over time. No bleach.





White
Cotton Twill



White
Cotton Twill





Model is wearing a size M

Style # UJ005 | Unisex

Lab Coat

(Model pictured in White Cotton Twill)

Pricing

6~10	11~25	26~50	51~99	100+	200+	500+	1000+
\$189	\$149	\$139	\$129	\$103	\$89	\$79	\$69

Sizing

	XS	S	M	L	XL	2X	3X
Chest:	42"	44"	46"	48"	50"	52"	54"
Sleeve:	24"	24.5"	25"	25.5"	26"	26.5"	27"
Shoulder:	17"	18"	19"	20"	21"	22"	23"
Length:	43"	43.5"	44"	44.5"	45"	45.5"	46"



Pictured in White Cotton Twill

Description:

A slightly different version of the trench coat. This lab coat features a notch collar and traditional button placket. Otherwise, the design is still kept modern for a clean overall silhouette. Depending on the material chosen, this piece can be good for cold or temperate climates.

Fit:

Standard fit

Material:

(Core) Cotton Oxford, Cotton Twill

Color Options:

Navy, Black, Off White, White. See fabric section for options.

Care Instructions:

Cold, regular wash. Tumble dry on low or lay flat to dry. Natural fading over time. No bleach.





White
Cotton Twill



FORMAL





Style # MJ003 | Male

Two Button Blazer

(Model pictured in Gray Melange Poly)

Pricing

6~10	11~25	26~50	51~99	100+	200+	500+	1000+
\$360	\$186	\$169	\$159	\$149	\$145	\$139	\$135

Sizing

	S	M	L	XL	2X	3X
Chest:	40-41"	42-43"	44-45"	46-47"	48-49"	50-51"
Sleeve:	24.5"	25"	25.5"	26"	26.5"	27"
Shoulder:	17.5"	18.5"	19.5"	20.5"	21.5"	22.5"
Length:	30.5"	31"	31.5"	32"	32.5"	33"

Model is wearing a size M

Description:

A modern rethinking of the classic blazer. The silhouette is slim, but not too slim. Think of it as a perfect in between from day to night that's not too stuffy but never too trendy. A timeless, classic cut. Two button construction.

Fit:

Slim fit

Material:

(Core) Cotton Twill, Melange Poly
 (Premium) Tropical Wool

Color Options:

Black, Navy, Gray. See fabric section for options (Melange Poly).

Care Instructions:

Dry Clean Only.



Pictured in Navy Cotton Twill





Model is wearing a size S

Style # FJ003 | Female

One Button Blazer

(Model pictured in Navy Cotton Twill)

Pricing

6~10	11~25	26~50	51~99	100+	200+	500+	1000+
\$360	\$186	\$169	\$159	\$149	\$145	\$139	\$135

Sizing

	XS	S	M	L	XL	2X
Chest:	32-33"	34-35"	36-37"	38-39"	40-41"	42-43"
Sleeve:	22"	22.5"	23"	23.5"	24"	24.5"
Shoulder:	13.5"	14.5"	15.5"	16.5"	17.5"	18.5"
Length:	24.5"	25"	25.5"	26"	26.5"	27"

Description:

A modern rethinking of the classic blazer. The silhouette is slim, but not too slim. Think of it as a perfect in between from day to night that's not too stuffy but never too trendy. A timeless, classic cut. One button construction.

Fit:

Slim fit

Material:

(Core) Cotton Twill, Melange Poly
(Premium) Tropical Wool

Color Options:

Black, Navy, Gray. See fabric section for options (Melange Poly).

Care Instructions:

Dry Clean Only.



Pictured in Navy Cotton Twill





*Olive
Melange Poly*



*Navy
Melange Poly*





*Black
Melange Poly*



*White
Poly*





Model is wearing a size M

Style # MJ006 | Male Double Breasted Blazer

(Model pictured in Navy Melange Poly)

Pricing

6~10	11~25	26~50	51~99	100+	200+	500+	1000+
\$390	\$259	\$192	\$189	\$184	\$179	\$174	\$169

Sizing

	S	M	L	XL	2X	3X
Chest:	40-41"	42-43"	44-45"	46-47"	48-49"	50-51"
Sleeve:	24.5"	25"	25.5"	26"	26.5"	27"
Shoulder:	17.5"	18.5"	19.5"	20.5"	21.5"	22.5"
Length:	29.5"	30"	30.5"	31"	31.5"	32"



Pictured in Navy Melange Poly

Description:

A modern rethinking of the double breasted blazer. The silhouette is slim, but not too slim. The double breasted lapel is a classic width that will never be tired nor trendy. Features welt chest pocket and 2 flap front pockets. Fully lined with inside welt pocket. A timeless, classic cut.

Fit:

Slim fit

Material:

(Core) Cotton Twill, Melange Poly
(Premium) Linen, Linen Blend

Color Options:

Black, Gray, Navy, Olive. See fabric section for options. (Melange Poly).

Care Instructions:

Dry Clean Only.





Model is wearing a size XS

Style # FJ006 | Female

Double Breasted Blazer

(Model pictured in Ivory Linen)

Pricing

6~10	11~25	26~50	51~99	100+	200+	500+	1000+
\$375	\$245	\$177	\$175	\$169	\$165	\$159	\$155

Sizing

	XS	S	M	L	XL	2X
Chest:	34"	36"	38"	40"	42"	44"
Sleeve:	23.5"	24"	24.5"	25"	25.5"	25.5"
Shoulder:	14.5"	15.5"	16.5"	17.5"	18.5"	19.5"
Length:	29"	29.5"	30"	30.5"	31"	31.5"

Description:

A modern rethinking of the double breasted blazer. The silhouette is slightly bigger than our slim cut blazer but with an elongated length. Features 1/4" welt pockets for a modern, sleek updating. Classic notch collar lapel. Fully lined. A timeless, classic cut. Not meant to button up but rather be worn open.

Fit:

Regular fit. Elongated body.

Material:

(Core) Melange Poly

(Premium) Linen, Linen Blend

Color Options:

Black, Gray, Navy, Olive. See fabric section for options (Melange Poly).

Care Instructions:

Dry Clean Only.



Pictured in Black Linen





*Ivory
Linen*



*Navy
Linen*





*Black
Linen*





Model is wearing a size M

Style # MJ007 | Male

Slim Shawl Collar Blazer

(Model pictured in Black Melange Poly)

Pricing

6~10	11~25	26~50	51~99	100+	200+	500+	1000+
\$360	\$186	\$169	\$159	\$149	\$145	\$139	\$135

Sizing

	S	M	L	XL	2X	3X
Chest:	40-41"	42-43"	44-45"	46-47"	48-49"	50-51"
Sleeve:	24.5"	25"	25.5"	26"	26.5"	27"
Shoulder:	17.5"	18.5"	19.5"	20.5"	21.5"	22.5"
Length:	30.5"	31"	31.5"	32"	32.5"	33"



Pictured in Black Melange Poly

Description:

A modern rethinking of the classic blazer with a shawl collar construction. The silhouette is slim, but not too slim. Think of it as a perfect in between from day to night that's not too stuffy but never too trendy. A timeless, classic cut. Two button construction.

Fit:

Slim fit

Material:

(Core) Melange Poly

(Premium) Linen, Linen Blend

Color Options:

Black, Gray, Navy, Olive. See fabric section for options. (Melange Poly).

Care Instructions:

Dry Clean Only.





Model is wearing a size XS

Style # FJ007 | Female

Slim Shawl Collar Blazer

(Model pictured in Black Melange Poly)

Pricing

6~10	11~25	26~50	51~99	100+	200+	500+	1000+
\$360	\$186	\$169	\$159	\$149	\$145	\$139	\$135

Sizing

	XS	S	M	L	XL	2X
Chest:	32-33"	34-35"	36-37"	38-39"	40-41"	42-43"
Sleeve:	22"	22.5"	23"	23.5"	24"	24.5"
Shoulder:	13.5"	14.5"	15.5"	16.5"	17.5"	18.5"
Length:	24.5"	25"	25.5"	26"	26.5"	27"



Pictured in Gray Melange Poly

Description:

A modern rethinking of the double breasted blazer. The silhouette is slightly bigger than our slim cut blazer but with an elongated length. Features 1/4" welt pockets for a modern, sleek updating. Classic notch collar lapel. Fully lined. A timeless, classic cut. Not meant to button up but rather be worn open.

Fit:

Regular fit. Elongated body.

Material:

(Core) Melange Poly
 (Premium) Linen, Linen Blend

Color Options:

Black, Gray, Navy, Olive. See fabric section for options. (Melange Poly).

Care Instructions:

Dry Clean Only.





Gray
Melange Poly





Model is wearing a size M

Style # MJ009 | Male

Relaxed Blazer

(Model pictured in Navy Linen)

Pricing

6~10	11~25	26~50	51~99	100+	200+	500+	1000+
\$388	\$257	\$190	\$187	\$182	\$177	\$172	\$167

Sizing

	S	M	L	XL	2X	3X
Chest:	43-44"	45-46"	47-48"	49-50"	51-52"	53-54"
Sleeve:	24"	24.5"	25"	25.5"	26"	26.5"
Shoulder:	18.5"	19.5"	20.5"	21.5"	22.5"	23.5"
Length:	29.5"	30"	30.5"	31"	31.5"	32"



Pictured in Black Linen

Description:

A single breasted unlined jacket for a more casual suiting look. It's meant to be worn a bit looser, which allows this style to dress up or down quite easy. Relaxed feel that pairs great with our pleated pant. A boxier and roomier cut.

Fit:

Relaxed fit. Boxier and looser fit.

Material:

(Premium) Linen, Linen Blend

Color Options:

Black, Navy, Off White. See fabric section for options.

Care Instructions:

Dry Clean Only.





*Navy
Linen*



*Black
Linen*





Model is wearing a size XS

Style # FJ008 | Female

Shawl Collar Double Breasted Blazer

(Model pictured in Black Melange Poly)

Pricing

6~10	11~25	26~50	51~99	100+	200+	500+	1000+
\$375	\$245	\$177	\$175	\$169	\$165	\$159	\$155

Sizing

	XS	S	M	L	XL	2X
Chest:	34"	36"	38"	40"	42"	44"
Sleeve:	23.5"	24"	24.5"	25"	25.5"	25.5"
Shoulder:	14.5"	15.5"	16.5"	17.5"	18.5"	19.5"
Length:	29"	29.5"	30"	30.5"	31"	31.5"



Pictured in Gray Melange Poly

Description:

A modern rethinking of the double breasted blazer featuring a shawl collar. The silhouette is slightly bigger than our slim cut blazer but with an elongated length. Features 1/4" welt pockets for a modern, sleek updating. Fully lined. A timeless, classic cut. Not meant to button up but rather be worn open.

Fit:

Regular fit. Elongated body.

Material:

(Core) Melange Poly
 (Premium) Linen, Linen Blend

Color Options:

Black, Gray, Navy, Olive. See fabric section for options (Melange Poly).

Care Instructions:

Dry Clean Only.





*Black
Melange Poly*



*Gray
Melange Poly*



Style # MJ004 | Male

Patch Pocket Blazer

(Model pictured in Navy Cotton Canvas, stone washed)



Model is wearing a size M

Pricing

6~10	11~25	26~50	51~99	100+	200+	500+	1000+
\$248	\$199	\$164	\$138	\$125	\$121	\$112	\$96

Sizing

	S	M	L	XL	2X	3X
Chest:	40"	42"	44"	46"	48"	50"
Sleeve:	24"	24.5"	25"	25.5"	26"	26.5"
Shoulder:	17"	18"	19"	20"	21"	22"
Length:	26"	26.5"	27"	27.5"	28"	28.5"

Description:

A more casual blazer that is deconstructed and unlined. More of a sports coat than blazer, this piece is versatile in its ability to look dressed up without being stuffy in a traditional suiting blazer. Designed with 3 patch pockets and a narrower lapel.

Fit:

Regular Fit. Boxy silhouette.

Material:

(Core) Cotton Twill, Cotton Canvas
(Premium) add Stone Washing

Color Options:

Black, Navy, Gray. See fabric section for options.

Care Instructions:

Cold, regular wash. Tumble dry on low or lay flat to dry.
Natural fading over time. No bleach.



Pictured in Navy Cotton Canvas, stone washed





Model is wearing a size XS

Style # FJ004 | Female

Patch Pocket Blazer

(Model pictured in Navy Cotton Canvas, stone washed)

Pricing

6~10	11~25	26~50	51~99	100+	200+	500+	1000+
\$248	\$199	\$164	\$138	\$125	\$121	\$112	\$96

Sizing

	XS	S	M	L	XL	2X
Chest:	36"	38"	40"	42"	44"	46"
Sleeve:	22.5"	23"	23.5"	24"	24.5"	25"
Shoulder:	15.5"	16.5"	17.5"	18.5"	19.5"	20.5"
Length:	24"	24.5"	25"	25.5"	26"	26.5"

Description:

A more casual blazer that is deconstructed and unlined. More of a sports coat than blazer, this piece is versatile in its ability to look dressed up without being stuffy in a traditional suiting blazer. Designed with 3 patch pockets and a narrower lapel.

Fit:

Regular Fit. Boxy silhouette.

Material:

(Core) Cotton Twill, Cotton Canvas
 (Premium) add Stone Washing

Color Options:

Black, Navy, Gray. See fabric section for options.

Care Instructions:

Cold, regular wash. Tumble dry on low or lay flat to dry.
 Natural fading over time. No bleach.



Pictured in Slate Cotton Canvas



*Navy
Cotton Canvas*

&

*Slate
Cotton Canvas*





Navy
Cotton Canvas, stone washed





Navy
Cotton Canvas, stone washed





Black
Cotton Canvas, stone washed



Slate
Cotton Canvas





Model is wearing a size M

Style # MJ005 | Male Suiting Vest

(Model pictured in Navy Poly)

Pricing

6~10	11~25	26~50	51~99	100+	200+	500+	1000+
\$189	\$149	\$139	\$138	\$111	\$99	\$89	\$76

Sizing

	S	M	L	XL	2X	3X
Chest:	37"	39"	41"	43"	45"	47"
Length:	24.5"	25"	25.5"	26"	26.5"	27"



Pictured in Navy Poly

Description:

A modern reinterpretation of the classic suiting vest. The silhouette is slim, but not too slim. A perfect addition to elevate a 2 piece suit to a 3 piece beauty. 5 button and 2 pocket construction.

Fit:

Slim fit

Material:

(Core) Cotton Twill, Melange Poly

Color Options:

Black, Navy, Gray. See fabric section for options (Melange Poly).

Care Instructions:

Dry Clean Only.





Model is wearing a size XS

Style # FJ005 | Female

Suiting Vest

(Model pictured in Navy Poly)

Pricing

6~10	11~25	26~50	51~99	100+	200+	500+	1000+
\$189	\$149	\$139	\$138	\$111	\$99	\$89	\$76

Sizing

	XS	S	M	L	XL	2X
Chest:	33"	35"	37"	39"	41"	43"
Length:	23.5"	24"	24.5"	25"	25.5"	26"

Description:

A modern reinterpretation of the classic suiting vest. The silhouette is slim, but not too slim. A perfect addition to elevate a 2 piece suit to a 3 piece beauty. 5 button and 2 pocket construction.

Fit:

Slim fit

Material:

(Core) Cotton Twill, Melange Poly

Color Options:

Black, Navy, Gray. See fabric section for options. (Melange Poly).

Care Instructions:

Dry Clean Only.



Pictured in Chestnut Cotton Twill





Navy
Poly





Navy
Cotton Twill





Model is wearing a size S

Style # FT016 | Female

Bell Sleeve Tunic

(Model pictured in Navy Cotton Poplin)

Pricing

6~10	11~25	26~50	51~99	100+	200+	500+	1000+
\$99	\$79	\$73	\$69	\$64	\$61	\$53	\$49

Sizing

	XS	S	M	L	XL	2X
Chest:	36"	38"	40"	42"	44"	46"
Sleeve:	23.5"	24"	24.5"	25"	25.5"	26"
Length:	24.5"	25"	25.5"	26"	26.5"	27"

Description:

A more feminine top featuring wider bell sleeves and a gathered cuff. Crew neck line with a key hole back & button closure. The cut is slightly boxy-straight. Best paired with our Wrap Skirt (FB005) in the same fabric/color.

Fit:

Standard fit

Material:

(Core) Cotton Poplin, Poly Cotton
 (Premium) Rayon Crepe, Linen, Linen Blend

Color Options:

Black, Navy, Ecru. See fabric section for options.

Care Instructions:

Cold, regular wash. Tumble dry on low or lay flat to dry. Natural fading over time. No bleach.



Pictured in Ecru Cotton Poplin





Ecru Cotton Poplin



Black Cotton Poplin





Model is wearing a size XS

Style # FT027 | Female

Blouson Shirt

(Model pictured in Denim Linen)

Pricing

6~10	11~25	26~50	51~99	100+	200+	500+	1000+
\$105	\$85	\$75	\$72	\$69	\$68	\$65	\$59

Sizing

	XS	S	M	L	XL	2X
Chest:	42"	44"	46"	48"	50"	52"
Sleeve:	27"	27.5"	28"	28.5"	29"	29.5"
Shoulder:	22.5"	23.5"	24.5"	25.5"	26.5"	27.5"

Description:

An easy to wear, loose-fitting blouse that can be tucked in or left out. Features a banded collar and blouson sleeves for an elevated yet relaxed look. Made of drapery rayon/linen blend for a comfortable and flowy overall look.

Fit:

Boxy, loose fit.

Material:

(Core) Cotton Poplin

Color Options:

See fabric section for options (Washed Linen).

Care Instructions:

Cold, regular wash. Tumble dry on low or lay flat to dry. Natural fading over time. No bleach.



Pictured in Natural Linen





*Brown
Linen*



*Rust
Linen*



*Rose
Linen*



*Lilac
Linen*





*Natural
Linen*





Model is wearing a size XS

Style # FT028 | Female

Romper

(Model pictured in Black Stretch Double Crepe)

Pricing

6~10	11~25	26~50	51~99	100+	200+	500+	1000+
\$155	\$123	\$119	\$99	\$95	\$89	\$86	\$83

Sizing

	XXS	XS	S	M	L	XL
Chest:	30"	32"	34"	36"	38"	40"
Waist:	29"	31"	33"	35"	37"	39"
Length:	56.5"	57"	57.5"	58"	58.5"	59"



Pictured in Black Stretch Double Crepe

Description:

A sleeveless wide leg romper. Great as a standalone piece or paired with a blazer. Nice alternative to dresses for Hostess, Front Desk, Concierge or Managers. The top half is made of stretch crepe for comfort. The bottom half is made of a textured woven creating a beautiful juxtaposition of comfort & design.

Fit:

Slightly relaxed fit meant to be worn loose around the bodice. Wide leg design makes it roomier from seat through the legs.

Material:

(Core) Stretch Crepe

Color Options:

See fabric section for options (Stretch Crepe).

Care Instructions:

Dry clean only.





*Black
Stretch Double Crepe*





*Black
Stretch Double Crepe
w/ Black Linen Double Breasted Blazer*



*Black
Stretch Double 4Crepe
w/ Ivory Linen Double Breasted Blazer*





Model is wearing a size 32

Style # MB009 | Male Suiting Pants

(Pictured in Olive Poly)

Pricing

6~10	11~25	26~50	51~99	100+	200+	500+	1000+
\$137	\$92	\$87	\$80	\$71	\$69	\$68	\$63

Sizing

	26	28	30	32	34	36
Waist:	26"	28"	30"	32"	34"	36"
Hips:	38"	40"	42"	44"	46"	48"
Inseam:	32"	32"	32"	32"	32"	32"
	38	40	42	44	46	48
Waist:	38"	40"	42"	44"	46"	48"
Hips:	50"	52"	54"	56"	58"	60"
Inseam:	32"	32"	32"	32"	32"	32"

Description:

Our take on the classic suiting pant. This staple piece is cut slimmer than traditional uniform suiting pants but still a nice balance between style and comfort. Zipper/button construction with 2 side pockets and 2 back welt pockets.

Fit:

Runs similar to traditional suiting pants

Material:

(Core) Cotton Twill, Poly
(Premium) Tropical Wool

Color Options:

Navy, Black, Gray. See fabric section for options.

Care Instructions:

Dry Clean Only.



Pictured in Navy Poly





Model is wearing a size 28

Style # FB009 | Female Suiting Pants

(Pictured in Black Poly)

Pricing

6~10	11~25	26~50	51~99	100+	200+	500+	1000+
\$137	\$92	\$87	\$80	\$71	\$69	\$68	\$63

Sizing

	24	26	28	30	32	34
Waist:	24"	26"	28"	30"	32"	34"
Hips:	39"	41"	43"	45"	47"	49"
Inseam:	31"	31"	31"	31"	31"	31"
	36	38	40	42	44	46
Waist:	36"	38"	40"	42"	44"	46"
Hips:	51"	53"	55"	57"	59"	61"
Inseam:	31"	31"	31"	31"	31"	31"

Description:

Our take on the classic suiting pant. This staple piece is cut slimmer than traditional uniform suiting pants but still a nice balance between style and comfort. Zipper/button construction with 2 side pockets and 2 back welt pockets.

Fit:

Runs similar to traditional suiting pants

Material:

(Core) Cotton Twill, Poly
(Premium) Tropical Wool

Color Options:

Navy, Black, Gray. See fabric section for options.

Care Instructions:

Dry Clean Only.



Pictured in Navy Poly





Olive
Melange Poly



Black
Melange Poly





Model is wearing a size S

Style # FB008 | Female

Wide Leg Pant

(Model pictured in Navy Baby Twill)

Pricing

6~10	11~25	26~50	51~99	100+	200+	500+	1000+
\$95	\$79	\$77	\$72	\$69	\$67	\$65	\$63

Sizing

	24	26	28	30	32	34
Waist:	24"	26"	28"	30"	32"	34"
Hips:	48"	50"	52"	54"	56"	58"
Inseam:	26"	26"	26"	26"	26"	26"
	36	38	40	42	44	46
Waist:	36"	38"	40"	42"	44"	46"
Hips:	60"	62"	64"	66"	68"	70"
Inseam:	26"	26"	26"	26"	26"	26"

Description:

This pant is the perfect balance of comfort and style. Flat front elastic waistband provides comfort and flexibility in sizing. The wide leg adds an elevated casual look that is extremely comfortable to work in all day. Features slotted front pockets and a faux fly detail for slipping in and out of easily.

Fit:

True to size. The elastic waistband provides extra flexibility in sizing.

Material:

(Core) Baby Twill

Color Options:

Black, Charcoal, Navy, Olive, Off White.

Care Instructions:

Cold, regular wash. Tumble dry on low or lay flat to dry. Natural fading over time. No bleach.



Pictured in Charcoal Baby Twill





Olive
Baby Twill





Model is wearing a size S

Style # FB002 | Female

Maxi Skirt

(Model pictured in Black Rayon Crepe)

Pricing

6~10	11~25	26~50	51~99	100+	200+	500+	1000+
\$179	\$102	\$99	\$93	\$86	\$82	\$73	\$63

Sizing

	XS	S	M	L	XL	2X
Waist:	26"	28"	30"	32"	34"	36"
Hips:	44"	46"	48"	50"	52"	54"
Length:	42.5"	43"	43.5"	44"	44.5"	45"



Pictured in Black Rayon Crepe

Description:

An elegant floor length skirt that can be dressed up or down depending on the top it is paired with. The skirt features a high waist and is flowy through the hips to the hem. An elastic waistband keeps this skirt easy to wear, comfortable to work in, and ordering seamless.

Fit:

Standard fit

Material:

(Core) Cotton Jersey, Rayon Crepe

Color Options:

Black, Navy, Gray, Off White. See fabric section for options.

Care Instructions:

Cold, regular wash. Tumble dry on low or lay flat to dry. Natural fading over time. No bleach.





Model is wearing a size S

Style # FB003 | Female

Pencil Skirt

(Model pictured in Navy Poly)

Pricing

6~10	11~25	26~50	51~99	100+	200+	500+	1000+
\$169	\$89	\$85	\$79	\$75	\$69	\$65	\$55

Sizing

	XS	S	M	L	XL	2X
Waist:	26"	28"	30"	32"	34"	36"
Hips:	34"	36"	38"	40"	42"	44"
Length:	20.5"	21"	21.5"	22"	22.5"	23"



Pictured in Navy Poly

Description:

A classic pencil skirt perfect for an alternative to suiting pants. This skirt runs slim and fits narrow from the waist through the hips.

** This skirt also comes in midi length (below knee).*

Fit:

Runs slimmer than traditional uniform skirts. If in doubt, go up 1 waist size

Material:

(Core) Cotton Twill, Poly, Poly Cotton

Color Options:

Black, Navy, Gray. See fabric section for options.

Care Instructions:

Dry Clean Only.





*Navy
Poly*





Model is wearing a size S

Style # FB005 | Female

Wrap Skirt

(Model pictured in Navy Cotton Poplin)

Pricing

6~10	11~25	26~50	51~99	100+	200+	500+	1000+
\$139	\$79	\$74	\$69	\$57	\$55	\$53	\$49

Sizing

	XS	S	M	L	XL	2X
Waist:	25"	27"	29"	31"	33"	35"
Hips:	48"	50"	52"	54"	56"	58"
Length:	23"	23.5"	24"	24.5"	25"	25.5"

Description:

A very flattering and democratically fitting wrap skirt that accommodates many sizes. The hem is slightly asymmetric, which can be adjusted depending on how the skirt gets tied. Very comfortable and easy to move in. Designed to hit just below the knee.

Fit:

Standard fit

Material:

(Core) Cotton Poplin, Poly Cotton

(Premium) Rayon Crepe, Linen, Linen Blend

Color Options:

Black, Navy, Ecru. See fabric section for options.

Care Instructions:

Cold, regular wash. Tumble dry on low or lay flat to dry. Natural fading over time. No bleach.



Pictured in Ecru Cotton Poplin





Ecru
Cotton Poplin



Black
Cotton Poplin



DRESSES





Model is wearing a size S

Style # FD001 | Female

Asymmetric Dress

(Model pictured in Gray Crepe de Chine, Midi)

Pricing

	6~10	11~25	26~50	51~99	100+	200+	500+
Midi	\$165	\$110	\$110	\$105	\$89	\$79	\$66
Long	\$170	\$115	\$115	\$110	\$94	\$84	\$71

Sizing

	XS	S	M	L	XL	2X
Chest:	34"	36"	38"	40"	42"	44"
Waist:	26"	28"	30"	32"	34"	36"
Length (Midi):	44.5"	45"	45.5"	46"	46.5"	47"



Pictured in Gray Crepe de Chine

Description:

A modern dress that has a tasteful elegance appropriate for any luxury property. The neck and sleeve openings are small, which give the dress its modern feel. The waist cinches slightly to give some definition. The slit wraps diagonally from the waist to the hem. Midi length hits right around the knee.

** Long version is floor length*

Fit:

Very slim fit. Designed to be very form fitting. If on the cusp, consider going up in size and tailoring.

Material:

(Core) Poly Wool, Rayon Crepe
(Premium) Crepe de Chine

Color Options:

Black, Gray, Navy. See fabric section for options.

Care Instructions:

Dry Clean Recommended. Dependent on material.





Red
Rayon Crepe





Black
Rayon Crepe



Navy
Rayon Crepe



Red
Rayon Crepe





*Black
Rayon Crepe*



*Navy
Rayon Crepe*





Model is wearing a size S

Style # FD002 | Female

Kimono Sleeve Wrap Dress

(Model pictured in White Rayon Crepe, Midi)

Pricing

	6~10	11~25	26~50	51~99	100+	200+	500+
Midi	\$185	\$134	\$134	\$110	\$96	\$93	\$89
Long	\$190	\$139	\$139	\$115	\$101	\$98	\$94

Sizing

	XS	S	M	L	XL	2X
Chest:	30"	32"	34"	36"	38"	40"
Waist:	26"	28"	30"	32"	34"	36"
Length (Midi):	41.5"	42"	42.5"	43"	43.5"	44"
Sleeve:	17.75"	18"	18.25"	18.5"	18.75"	19"



Pictured in Navy Rayon Crepe

Description:

A modern reinterpretation of a kimono dress that is flattering on almost any body type. It's a wrap style dress with a waist tie that accommodates a wide range of body types. Tasteful and elegant for a dress that is not your run of the mill uniform dress.

* Long version is floor length

Fit:

Standard fit

Material:

(Core) Rayon Crepe, Peachskin Poly

Color Options:

Black, White, Cream, Navy. See fabric section for options.

Care Instructions:

Dry Clean Recommended. Dependent on material.





White
Rayon Crepe

** There is a sheer quality to white in this material. A nude slip should be worn underneath or a darker color material should be chosen if that is an issue.*





White
Rayon Crepe



Navy
Rayon Crepe





Natural
Peachskin Poly



Navy
Peachskin Poly





Model is wearing a size XS

Style # FD010 | Female

Elongated Wrap Dress

(Model pictured in Natural Peachskin Poly)

Pricing

6~10	11~25	26~50	51~99	100+	200+	500+	1000+
\$148	\$99	\$88	\$79	\$74	\$69	\$66	\$60

Sizing

	XS	S	M	L	XL	2X
Chest:	35"	37"	39"	41"	43"	45"
Waist:	33"	35"	37"	39"	41"	43"
Length:	41"	41.5"	42"	42.5"	43"	43.5"
Sleeve:	11.5"	11.75"	12"	12.25"	12.5"	12.75"



Pictured in Navy Peachskin Poly

Description:

A longer wrap dress that falls around mid-calf (midi). 3/4" sleeves with belted ties that tie on the side for a relaxed, airy feel. This style accommodates a wider range of body sizes. An easy piece to wear that is flattering on just about any body type.

Fit:

Relaxed and loose fit

Material:

(Core) Peachskin Poly

Color Options:

White, Black, Navy, Ecru. See fabric section for options (Peachskin Poly).

Care Instructions:

Cold, regular wash. Tumble dry on low or lay flat to dry. Natural fading over time. No bleach.





Navy
Peachskin Poly





Toast
Peachskin Poly



Navy
Peachskin Poly
w/ Double Breasted Blazer in Ivory Linen





Model is wearing a size XS

Style # FD015 | Female

Rei Dress

(Model pictured in Black Barbie Gaberdine)

Pricing

6~10	11~25	26~50	51~99	100+	200+	500+	1000+
\$130	\$102	\$98	\$92	\$88	\$85	\$83	\$79

Sizing

	XS	S	M	L	XL	2X
Chest:	32"	34"	36"	38"	40"	42"
Waist:	26"	28"	30"	32"	34"	36"
Length:	44"	44.5"	45"	45.5"	46"	46.5"



Pictured in Black Barbie Gaberdine

Description:

A sophisticated and modern dress great for Hostess, Front Desk, and Managers. Designed to fall around mid calf (midi). Features cape sleeves. Hugs beautifully on the shoulders creating a drape that is comfortable to wear and work in all day. Princess seams run down the bodice.

Fit:

Slim fit

Material:

(Core) Stretch Gaberdine

Color Options:

See fabric section for options (Stretch Gaberdine).

Care Instructions:

Dry Clean Only.





*Black
Barbie Gaberdine*





Model is wearing a size XS

Style # FD013 | Female

Pleated Dress

(Model pictured in Navy Poly Crepe Jersey)

Pricing

6~10	11~25	26~50	51~99	100+	200+	500+	1000+
\$85	\$65	\$62	\$56	\$52	\$50	\$48	\$45

Sizing

	XS	S	M	L	XL	2X
Chest:	33"	35"	37"	39"	41"	43"
Shoulder:	14.25"	15.25"	16.25"	17.25"	18.25"	19.25"
Sleeve:	23"	23.5"	24"	24.5"	25"	25.5"
Length:	34.5"	35"	35.5"	36"	36.5"	37"



Pictured in Olive Poly Crepe Jersey

Description:

Sophisticated and easy to wear, this style is long sleeve with a pleated shoulder detail. Features an invisible zipper closure. Designed to fall above the knee.

Fit:

True to size. Suggested fabric is a knit giving this true size some flexibility in sizing.

Material:

(Core) Poly Crepe Jersey

Color Options:

Black, Navy, Olive. See fabric section for options (Crepe Jersey).

Care Instructions:

Cold, regular wash. Tumble dry on low or lay flat to dry. Natural fading over time. No bleach.





Olive
Poly Crepe Jersey





Model is wearing a size S

Style # FD003 | Female

Classic Wrap Dress

(Model pictured in Navy Ponte)

Pricing

6~10	11~25	26~50	51~99	100+	200+	500+	1000+
\$115	\$84	\$75	\$69	\$59	\$55	\$47	\$43

Sizing

	XS	S	M	L	XL	2X
Chest:	32"	34"	36"	38"	40"	42"
Waist:	26"	28"	30"	32"	34"	36"
Sleeve:	6.5"	6.75"	7"	7.25"	7.5"	7.75"
Length:	33.5"	34"	34.5"	35"	35.5"	36"



Pictured in Red Linen Blend

Description:

A classic wrap dress that is flattering on almost any body type. It's a wrap style dress with a waist tie that accommodates a wide range of body types. Tasteful and elegant for a dress that is not your run of the mill uniform dress. Added eyelet on bottom hem to minimize the dress slit opening at the bottom.

Fit:

Standard fit

Material:

(Core) Ponte

(Premium) Linen, Linen Blend

Color Options:

Black, White, Navy. See fabric section for options.

Care Instructions:

Cold, regular wash. Tumble dry on low or lay flat to dry. Natural fading over time. No bleach.





*Navy
Ponte*



*Red
Linen Blend*





Model is wearing a size XS

Style # FD014 | Female

Wrap Tie Dress

(Model pictured in Black ITY Crepe Jersey)

Pricing

6~10	11~25	26~50	51~99	100+	200+	500+	1000+
\$85	\$65	\$62	\$56	\$52	\$50	\$48	\$45

Sizing

	XS	S	M	L	XL	2X
Chest:	31"	35"	37"	39"	41"	43"
Waist:	32"	34"	36"	38"	40"	42"
Length:	40"	40.5"	41"	41.5"	42"	42.5"



Pictured in Black ITY Crepe Jersey

Description:

A sleek and modern design, this dress is easy to wear and flattering for most body types. Features a short sleeve with contrast poly chiffon waist ties. Finished with marrow and raw edges for a deconstructed feel. Intended to fall above the knee. Designed with comfort first and foremost in mind.

Fit:

True to size. The tie construction allows flexibility in sizing as well as styling.

Material:

(Core) Poly Crepe Jersey

Color Options:

Black, Navy, Olive. See fabric section for options (Crepe Jersey).

Care Instructions:

Cold, regular wash. Tumble dry on low or lay flat to dry. Natural fading over time. No bleach.





Navy
ITY Crepe Jersey





Style # FD007 | Female

Shirt Dress with Self Fabric Belt

(Model pictured in Black Linen Blend, Short Sleeve)

Pricing

	6~10	11~25	26~50	51~99	100+	200+	500+
Short Sleeve	\$139	\$114	\$109	\$95	\$86	\$76	\$69
Long Sleeve	\$144	\$119	\$114	\$99	\$91	\$81	\$74

Sizing

	XS	S	M	L	XL	2X
Chest:	36"	38"	40"	42"	44"	46"
Waist:	38"	40"	42"	44"	46"	48"
Sleeve (SS):	9.5"	9.75"	10"	10.25"	10.5"	10.75"
Sleeve (LS):	21.5"	22"	22.5"	23"	23.5"	24"
Length(Midi):	47"	47.5"	48"	48.5"	49"	49.5"

Description: *Model is wearing a size S*

This shirt dress has a more structured, fitted silhouette than our standard shirt dress. It features a standard collar and full 9 button placket. Additionally, this dress has a self fabric belt. Overall it's a more elevated version of our shirt dress that is more versatile in its usage. Midi length.
 * This dress also comes in long sleeve.

Fit:
 Standard fit

Material:
 (Core) Cotton Poplin, Poly Cotton, Cotton Oxford
 (Premium) Linen, Linen Blend

Color Options:
 Black, Navy, Ecru, Gray. See fabric section for options.

Care Instructions:
 Cold, regular wash. Tumble dry on low or lay flat to dry.
 Natural fading over time. No bleach.



Pictured in Black Linen Blend





*Long Sleeve
Gray Linen Blend*



*Long Sleeve
Ivory Linen Blend*



*Long Sleeve
Navy Linen Blend*





Model is wearing a size S

Style # FD005 | Female

Long Sleeve Shirt Dress with Ties

(Model pictured in Black Rayon Crepe)

Pricing

6~10	11~25	26~50	51~99	100+	200+	500+	1000+
\$125	\$109	\$104	\$89	\$77	\$69	\$63	\$59

Sizing

	XS	S	M	L	XL	2X
Chest:	36"	38"	40"	42"	44"	46"
Waist:	34"	36"	38"	40"	42"	44"
Sleeve:	23.75"	24"	24.25"	24.5"	24.75"	25"
Length:	24.5"	25"	25.5"	26"	26.5"	27"



Pictured in Black Rayon Crepe

Description:

An easy and casual dress that can be dressed up or down. The silhouette is based off a shirt dress, but has the added tie around the waist to give a little more definition and flexibility in styling.

* This dress also comes in 3/4" sleeve length.

Fit:

Standard fit

Material:

(Core) Rayon Crepe, Cotton Jersey

Color Options:

Black, Ecu, Navy, Gray. See fabric section for options.

Care Instructions:

Cold, regular wash. Tumble dry on low or lay flat to dry. Natural fading over time. No bleach.





Model is wearing a size S

Style # FD006 | Female

Shirt Dress

(Model pictured in White Cotton Twill)

Pricing

6~10	11~25	26~50	51~99	100+	200+	500+	1000+
\$128	\$89	\$87	\$79	\$69	\$59	\$55	\$49

Sizing

	XS	S	M	L	XL	2X
Chest:	42.5"	44.5"	46.5"	48.5"	50.5"	52.5"
Waist:	42.5"	44.5"	46.5"	48.5"	50.5"	52.5"
Sleeve:	22.25"	22.5"	22.75"	23"	23.25"	23.5"
Length:	39.5"	40"	40.5"	41"	41.5"	42"

Description:

We've updated our shirt dress to be more flattering. Traditionally based off the idea of a woman wearing a man's shirt, this version has a more flattering silhouette. It's still meant to be worn oversized. Has two pockets and can be worn with or without leggings. * This dress also comes in full button version.

Fit:

Runs large

Material:

(Core) Cotton Poplin, Cotton Twill, Cotton Oxford, Cotton Canvas, Denim, Poly Cotton
(Premium) Linen, Linen Blend

Color Options:

Navy, Ecru, Black, British Khaki, Gray, White, Railroad Stripe. See fabric section for options.

Care Instructions:

Cold, regular wash. Tumble dry on low or lay flat to dry. Natural fading over time. No bleach.



Pictured in Olive Cotton Twill





*White
Cotton Twill*





Model is wearing a size S

Style # FD011 | Female

Shirt Dress, Banded Collar

(Model pictured in Navy Cotton Poplin)

Pricing

6~10	11~25	26~50	51~99	100+	200+	500+	1000+
\$132	\$93	\$88	\$82	\$72	\$62	\$57	\$51

Sizing

	XS	S	M	L	XL	2X
Chest:	42.5"	44.5"	46.5"	48.5"	50.5"	52.5"
Waist:	42.5"	44.5"	46.5"	48.5"	50.5"	52.5"
Sleeve:	22.25"	22.5"	22.75"	23"	23.25"	23.5"
Length:	36.5"	37"	37.5"	38"	38.5"	39"

Description:

Similar in shape to our standard shirt dress (FD006). This version features a more streamlined design with narrow banded collar and hidden button placket, only exposing the top button. The sleeve is 3/4". This can be worn with or without pants/leggings.

Fit:

Standard fit

Material:

(Core) Cotton Poplin, Cotton Oxford, Poly Cotton
(Premium) Linen, Linen Blend

Color Options:

Navy, Ecru, Black, Gray. See fabric section for options.

Care Instructions:

Cold, regular wash. Tumble dry on low or lay flat to dry. Natural fading over time. No bleach.



Pictured in Navy Cotton Poplin





Worn w/ chinos





Model is wearing a size S

Style # FD008 | Female Kaftan Dress

(Model pictured in Red Linen Blend)

Pricing

6~10	11~25	26~50	51~99	100+	200+	500+	1000+
\$143	\$108	\$103	\$98	\$92	\$84	\$78	\$74

Sizing

	XS	S	M	L	XL	2X
Chest:	44"	46"	48"	50"	52"	54"
Waist:	44"	46"	48"	50"	52"	54"
Length:	46"	46.5"	47"	47.5"	48"	48.5"



Pictured in Red Linen Blend

Description:

Based off the breezy kaftans of Morocco, this dress is designed to be boxy and flowy. It's a very democratic dress in its universally flattering fit for just about any body type. The dress is meant for more casual positions like the pool or bar.

Fit:

Runs very large. Size down from normal size. Meant to be worn flowy.

Material:

(Core) Cotton Poplin, Poly Cotton
(Premium) Linen, Linen Blend

Color Options:

Black, Navy, Ecru, Gray. See fabric section for options.

Care Instructions:

Cold, regular wash. Tumble dry on low or lay flat to dry. Natural fading over time. No bleach.





Model is wearing a size XS

Style # FD012 | Female

Barton Dress

(Model pictured in Navy Linen)

Pricing

6~10	11~25	26~50	51~99	100+	200+	500+	1000+
\$151	\$96	\$79	\$77	\$75	\$74	\$71	\$65

Sizing

	XS	S	M	L	XL	2X
Chest:	52"	54"	56"	58"	60"	62"
Waist:	52"	54"	56"	58"	60"	62"
Sleeve:	10.75"	11"	11.25"	11.5"	11.75"	12"
Length:	39"	39.5"	40"	40.5"	41"	41.5"



Pictured in Navy Linen

Description:

An easy dress that is designed to be body inclusive. The Barton should fall straight down and land around the ankle. The V-neck is shallow enough to ensure a modest look. Side slits allow for easier movement on the job.

Fit:

Standard fit. Meant to be worn loose.

Material:

(Premium) Linen, Linen Blend

Color Options:

Black, Ivory, Navy, White. See fabric section for options (Linen, Linen Blend).

Care Instructions:

Cold, regular wash. Tumble dry on low or lay flat to dry. Natural fading over time. No bleach.





Model is wearing a size S

Style # FD009 | Female

Tank Wrap Dress

(Model pictured in Gray Linen Blend)

Pricing

6~10	11~25	26~50	51~99	100+	200+	500+	1000+
\$135	\$108	\$94	\$87	\$79	\$75	\$69	\$63

Sizing

	XS	S	M	L	XL	2X
Chest:	33"	35"	37"	39"	41"	43"
Waist:	29"	31"	33"	35"	37"	39"
Length:	32"	32.5"	33"	33.5"	34"	34.5"

Description:

Short wrap dress with spaghetti straps at the shoulder and waist. Length hits just above the knee. The backside is cut straight across exposing the upper third of the back.

Fit:

Standard fit

Material:

(Premium) Linen, Linen Blend

Color Options:

Black, Navy, Gray. See fabric section for options.

Care Instructions:

Cold, regular wash. Tumble dry on low or lay flat to dry. Natural fading over time. No bleach.



Pictured in Gray Linen Blend





Model is wearing a size S

Style # FD004 | Female

Tank Dress

(Model pictured in Black Cotton Jersey)

Pricing

6~10	11~25	26~50	51~99	100+	200+	500+	1000+
\$108	\$81	\$75	\$71	\$58	\$55	\$48	\$44

Sizing

	XS	S	M	L	XL	2X
Chest:	35"	37"	39"	41"	43"	45"
Waist:	36"	38"	40"	42"	44"	46"
Length:	33.5"	34"	34.5"	35"	35.5"	36"

Description:

An easy and casual dress that can be dressed up or down. The silhouette is slightly boxier, but sized down, can be worn more form fitting. Key hole detail on the back side. If a little more definition in the waist area is desired, a belt can be added to the dress.

Fit:

Standard fit

Material:

(Core) Cotton Jersey

Color Options:

Black, White, Navy, Gray. See fabric section for options.

Care Instructions:

Cold, regular wash. Tumble dry on low or lay flat to dry. Natural fading over time. No bleach.



Pictured in Black Cotton Jersey



BOTTOMS





Model is wearing a size 36

Style # UB001 | Unisex Drawstring Chinos

(Pictured in Gray Cotton Twill)

Pricing

6~10	11~25	26~50	51~99	100+	200+	500+	1000+
\$103	\$75	\$73	\$68	\$65	\$61	\$59	\$51

Sizing

	24	26	28	30	32	34
Waist:	24"	26"	28"	30"	32"	34"
Hips:	41"	43"	45"	47"	49"	51"
Inseam:	28"	28"	28"	28"	28"	28"
	36	38	40	42	44	46
Waist:	36"	38"	40"	42"	44"	46"
Hips:	53"	57"	59"	61"	63"	65"
Inseam:	28"	28"	28"	28"	28"	28"

Description:

This pant is designed with a very democratic fit intended to accommodate a wide variety of body types. In addition to zipper/button construction, there is an added drawstring to allow for a wider waist variety within each size. This pant runs big so it can be worn in a number of different ways.

Fit:

Runs big. Generally speaking, take true waist size and go down 1 to 2 sizes depending on your preferred style (slim or loose fit). See size guide on following pages.

Material:

(Core) Cotton Twill, Cotton Twill w/ Lycra, Denim

Color Options:

Navy, Ecru, Black, British Khaki, Gray, White, Railroad Stripe. See fabric section for options.

Care Instructions:

Cold, regular wash. Tumble dry on low or lay flat to dry. Natural fading over time. No bleach.



Pictured in Navy Cotton Twill





*British Khaki
Cotton Twill*



Mid Denim





Garment dye to match any Pantone



Drawstring Chinos

Sizing Guidelines

Model is a true 32 waist



Size 30 - Fitted



Size 32 - Slim



Size 34 - Loose

Description:

This pant is designed with a very democratic fit intended to accommodate a wide variety of body types. In addition to the zipper/button construction, there is an added drawstring to allow for a larger waist variety within each size. *This pant runs big* so it can be worn in a number of different ways- fitted, slim and loose. Below shows how a male who is a true 32 waist pant off the rack at most standardized sized retailers can wear 3 different sizes. The choice of size will depend on how the wearer prefers to wear their pants.

Finery Sizing:

The general rule of thumb for ordering this pant is to find a slim fit, as this is the best balance for style and functionality. Take your true waist size (with measuring tape, measure the area just below your navel) and from that number go down a size. For example, if you measure a 36 or 37, choose a 34. Please note, this rule of thumb works for *most standard body types*. There will always be exceptions to the rule, particularly when the wearer has a unique waist to hips ratio. Please use this a general guideline when ordering this style.





Model is wearing a size 32

Style # MB004 | Male Chinos

(Pictured in White Cotton Twill)

Pricing

6~10	11~25	26~50	51~99	100+	200+	500+	1000+
\$118	\$75	\$73	\$68	\$61	\$56	\$54	\$52

Sizing

	26	28	30	32	34	36
Waist:	26"	28"	30"	32"	34"	36"
Hips:	38"	40"	42"	44"	46"	48"
Inseam:	32"	32"	32"	32"	32"	32"
	38	40	42	44	46	48
Waist:	38"	40"	42"	44"	46"	48"
Hips:	50"	52"	54"	56"	58"	60"
Inseam:	32"	32"	32"	32"	32"	32"

Description:

Durable yet impeccably stylish, our Chinos are a versatile trouser that can be worn by almost any position. This staple piece is cut slimmer than traditional uniform chinos but still roomy enough for undeniable comfort. Zipper/button construction with 2 back patch pockets.

Fit:

Runs slimmer than traditional uniform pants. If in doubt, go up 1 waist size.

Material:

(Core) Cotton Twill, Cotton Twill w/ Lycra, Denim

Color Options:

Navy, Ecru, Black, British Khaki, Gray, White, Railroad Stripe. See fabric section for options.

Care Instructions:

Cold, regular wash. Tumble dry on low or lay flat to dry. Natural fading over time. No bleach.



Pictured in Black Cotton Twill





Model is wearing a size 27

Style # FB004 | Female Chinos

(Pictured in White Cotton Twill)

Pricing

6~10	11~25	26~50	51~99	100+	200+	500+	1000+
\$118	\$75	\$73	\$68	\$61	\$56	\$54	\$52

Sizing

	24	26	28	30	32	34
Waist:	24"	26"	28"	30"	32"	34"
Hips:	32"	34"	36"	38"	40"	42"
Inseam:	28"	28"	28"	28"	28"	28"
	36	38	40	42	44	46
Waist:	36"	38"	40"	42"	44"	46"
Hips:	44"	46"	48"	50"	52"	54"
Inseam:	28"	28"	28"	28"	28"	28"

Description:

Durable yet impeccably stylish, our Chinos are a versatile trouser that can be worn by almost any position. This staple piece is cut slimmer than traditional uniform chinos but still roomy enough for undeniable comfort. Zipper/button construction with 2 back patch pockets.

Fit:

Runs slimmer than traditional uniform pants. If in doubt, go up 1 waist size.

Material:

(Core) Cotton Twill, Cotton Twill w/ Lycra, Denim

Color Options:

Navy, Ecru, Black, British Khaki, Gray, White, Railroad Stripe. See fabric section for options.

Care Instructions:

Cold, regular wash. Tumble dry on low or lay flat to dry. Natural fading over time. No bleach.



Pictured in British Khaki Cotton Twill





*Navy
Cotton Twill*



*White
Cotton Twill*





Model is wearing a size 32

Style # MB007 | Male Pleated Pant

(Pictured in Olive Cotton Twill)

Pricing

6~10	11~25	26~50	51~99	100+	200+	500+	1000+
\$125	\$88	\$84	\$74	\$70	\$68	\$65	\$62

Sizing

	26	28	30	32	34	36
Waist:	26"	28"	30"	32"	34"	36"
Hips:	42"	44"	46"	48"	50"	52"
Inseam:	28"	28"	28"	28"	28"	28"
	38	40	42	44	46	48
Waist:	38"	40"	42"	44"	46"	48"
Hips:	54"	56"	58"	60"	62"	64"
Inseam:	28"	28"	28"	28"	28"	28"

Description:

A stylish and extremely comfortable alternative to the standard slim chino. The pleated pant fits roomier through the legs and slightly tapers down to the cuff. Features a double pleated front and falls at the ankle. Can come uncuffed or cuffed (2 separate style #s). 1/4 back welt pockets, standard belt loops, and slotted front pockets.

Fit:

Runs true to size on the waist. Runs looser throughout the leg from thigh to hem.

Material:

(Core) Cotton Twill
(Premium) Linen, Linen Blend

Color Options:

Navy, Ecru, Black, British Khaki, Gray, White, Railroad Stripe. See fabric section for options (Twill & Linen).

Care Instructions:

Cold, regular wash. Tumble dry on low or lay flat to dry. Natural fading over time. No bleach. Dry clean linen.



Pictured in Black Cotton Twill





Model is wearing a size 32

Style # MB007_C | Male Pleated Pant, Cuffed

(Pictured in Ecrú Cotton Twill)

Pricing

6~10	11~25	26~50	51~99	100+	200+	500+	1000+
\$126	\$89	\$85	\$75	\$71	\$69	\$66	\$63

Sizing

	26	28	30	32	34	36
Waist:	26"	28"	30"	32"	34"	36"
Hips:	42"	44"	46"	48"	50"	52"
Inseam:	28"	28"	28"	28"	28"	28"
	38	40	42	44	46	48
Waist:	38"	40"	42"	44"	46"	48"
Hips:	54"	56"	58"	60"	62"	64"
Inseam:	28"	28"	28"	28"	28"	28"

Description:

A stylish and extremely comfortable alternative to the standard slim chino. The pleated pant fits roomier through the legs and slightly tapers down to the cuff. Features a double pleated front and falls at the ankle. Can come uncuffed or cuffed (2 separate style #s). 1/4 back welt pockets, standard belt loops, and slotted front pockets.

Fit:

Runs true to size on the waist. Runs looser throughout the leg from thigh to hem.

Material:

(Core) Cotton Twill
(Premium) Linen, Linen Blend

Color Options:

Navy, Ecrú, Black, British Khaki, Gray, White, Railroad Stripe. See fabric section for options (Twill & Linen).

Care Instructions:

Cold, regular wash. Tumble dry on low or lay flat to dry. Natural fading over time. No bleach. Dry clean linen.



Pictured in Navy Cotton Twill





Navy
Cotton Twill (Cuffed)



Olive
Cotton Twill



Ecru
Cotton Twill (Cuffed)





Model is wearing a size 28

Style # FB007 | Female Pleated Pant

(Pictured in Ivory Linen)

Pricing

6~10	11~25	26~50	51~99	100+	200+	500+	1000+
\$125	\$88	\$84	\$74	\$70	\$68	\$65	\$62

Sizing

	24	26	28	30	32	34
Waist:	24"	26"	28"	30"	32"	34"
Hips:	46"	48"	50"	52"	54"	56"
Inseam:	25.5"	25.5"	25.5"	25.5"	25.5"	25.5"
	36	38	40	42	44	46
Waist:	36"	38"	40"	42"	44"	46"
Hips:	58"	60"	62"	64"	66"	68"
Inseam:	25.5"	25.5"	25.5"	25.5"	25.5"	25.5"

Description:

A stylish and extremely comfortable alternative to the standard slim chino. The pleated front along with the elastic back waistband fits roomier through the legs and slightly tapers down to the cuff. Features a double pleated front and falls at the ankle. 1/4 back welt pockets, standard belt loops, and slotted front pockets.

Fit:

True to size but the elastic waist accommodates flexibility in sizing. Fits roomier through the leg to ankle.

Material:

(Core) Melange Poly
(Premium) Baby Twill, Linen, Linen Blend

Color Options:

See fabric section for options (Melange Poly, Linen, Linen Blend).

Care Instructions:

Cold, regular wash. Tumble dry on low or lay flat to dry. Natural fading over time. No bleach. Dry clean linen.



Pictured in Off White Baby Twill





Olive
Baby Twill



Black
Baby Twill



Navy
Baby Twill





Navy
Baby Twill



Ecru
Baby Twill



Black
Baby Twill





Model is wearing a size XS

Style # FB006 | Female

Cropped Pant

(Model pictured in Natural Peachskin Poly)

Pricing

6~10	11~25	26~50	51~99	100+	200+	500+	1000+
\$99	\$79	\$74	\$69	\$65	\$63	\$59	\$55

Sizing

	24	26	28	30	32	34
Waist:	24"	26"	28"	30"	32"	34"
Hips:	40"	42"	44"	46"	48"	50"
Inseam:	27"	27"	27"	27"	27"	27"
	36	38	40	42	44	46
Waist:	36"	38"	40"	42"	44"	46"
Hips:	52"	54"	56"	58"	60"	62"
Inseam:	27"	27"	27"	27"	27"	27"

Description:

An elevated yet easy pant for women looking for a dressier option. Features an elastic waistband and cropped ankle length. The pant is roomier through the hip and thigh and narrow from the knee down.

Fit:

Relaxed fit

Material:

(Core) Peachskin Poly

Color Options:

See fabric section for options (Peachskin Poly).

Care Instructions:

Cold, regular wash. Tumble dry on low or lay flat to dry. Natural fading over time. No bleach.



Pictured in Mocha Peachskin Poly





*Mocha
Peachskin Poly*

(RIGHT) w/ Elongated Wrap Dress





Model is wearing a size 34

Style # MB001 | Male Shorts

(Pictured in Navy Cotton Twill)

Pricing

6~10	11~25	26~50	51~99	100+	200+	500+	1000+
\$110	\$60	\$58	\$54	\$52	\$49	\$48	\$45

Sizing

	26	28	30	32	34	36
Waist:	26"	28"	30"	32"	34"	36"
Hips:	36"	38"	40"	42"	44"	46"
Inseam:	9"	9"	9"	9"	9"	9"
	38	40	42	44	46	48
Waist:	38"	40"	42"	44"	46"	48"
Hips:	48"	50"	52"	54"	56"	58"
Inseam:	9"	9"	9"	9"	9"	9"

Description:

Perfect for warm weather positions and the outdoors, these slim cut shorts are sturdy enough for even the busiest of pool scenes. They are designed to hit just above the knee for a clean, modern look. 2 back patch pockets. Baseline 9" inseam for a modern hem that strikes the perfect balance of comfort and style.

Fit:

Runs slimmer than traditional uniform shorts. If in doubt, go up 1 waist size.

Material:

(Core) Cotton Twill, Cotton Twill w/ Lycra, Denim

Color Options:

Navy, Ecru, Black, British Khaki, Gray, White, Railroad Stripe. See fabric section for options.

Care Instructions:

Cold, regular wash. Tumble dry on low or lay flat to dry. Natural fading over time. No bleach.



Pictured in British Khaki Cotton Twill





Model is wearing a size 28

Style # FB001 | Female Shorts

(Pictured in Khaki Cotton Twill)

Pricing

6~10	11~25	26~50	51~99	100+	200+	500+	1000+
\$110	\$60	\$58	\$54	\$52	\$49	\$48	\$45

Sizing

	24	26	28	30	32	34
Waist:	24"	26"	28"	30"	32"	34"
Hips:	32"	34"	36"	38"	40"	42"
Inseam:	7"	7"	7"	7"	7"	7"
	36	38	40	42	44	46
Waist:	36"	38"	40"	42"	44"	46"
Hips:	44"	46"	48"	50"	52"	54"
Inseam:	7"	7"	7"	7"	7"	7"

Description:

Perfect for warm weather positions and the outdoors, these slim cut shorts are sturdy enough for even the busiest of pool scenes. They are designed to hit just above the knee for a clean, modern look. 2 back patch pockets. Baseline 7" inseam for a modern hem that strikes the perfect balance of comfort and style.

Fit:

Runs slimmer than traditional uniform shorts. If in doubt, go up 1 waist size.

Material:

(Core) Cotton Twill, Cotton Twill w/ Lycra, Denim

Color Options:

Navy, Ecru, Black, British Khaki, Gray, White, Railroad Stripe. See fabric section for options.

Care Instructions:

Cold, regular wash. Tumble dry on low or lay flat to dry. Natural fading over time. No bleach.



Pictured in Gray Cotton Twill





*Khaki
Cotton Twill*



*Khaki
Cotton Twill*



APRONS





Style # A001 | Unisex

Bib Apron, Rope

(Model pictured in British Khaki Cotton Twill)

Pricing

6~10	11~25	26~50	51~99	100+	200+	500+	1000+
\$88	\$69	\$65	\$61	\$56	\$53	\$48	\$43

Sizing

One Size Fits All

Width:	26"	Top Pocket:	6"x6"
Length:	34"	Bottom Pocket:	11.5" x 13"
Neck Strap:	26"		
Waist Straps:	80" (40" each strap)		

Description:

Inspired by classic Japanese aprons, our version is updated with a few elements to make it appropriate for any restaurant. Top pocket is split in 2. The bottom pocket has 2 kangaroo hand pockets and one smaller zipper one. 1/4" rope ties on the neck and waist.

Fit:

One size fits all

Material:

(Core) Cotton Twill, Cotton Canvas, Denim

Color Options:

Dark Denim, British Khaki, Mid Denim, Navy, Black, Ecru, Olive, Railroad Stripe. See fabric section for options.

Customization Options (+ charges):

Silkscreen, Embroidery, Color Accents, Stitching

Care Instructions:

Cold, regular wash. Tumble dry on low or lay flat to dry. Natural fading over time. No bleach.



Pictured in Dark Denim



Pictured in Railroad Stripe Denim







Style # A002 | Unisex

Bib Apron, Buckle

(Model pictured in Olive Cotton Canvas)

Pricing

6~10	11~25	26~50	51~99	100+	200+	500+	1000+
\$88	\$69	\$65	\$61	\$56	\$53	\$48	\$43

Sizing

One Size Fits All

Width:	26"	Top Pocket:	6"x6"
Length:	34"	Bottom Pocket:	11.5" x 13"
Neck Strap:	36"		
Waist Straps:	80" (40" each strap)		

Description:

Classic buckle construction bib apron. Top pocket is split in 2. The bottom pocket has 2 kangaroo hand pockets and one smaller zipper one. 1/4" rope ties on the neck and waist. Brass or silver buckle options.

Fit:

One size fits all

Material:

(Core) Cotton Twill, Cotton Canvas, Denim

Color Options:

Dark Denim, British Khaki, Mid Denim, Navy, Black, Ecrú, Olive, Railroad Stripe. See fabric section for options.

Customization Options (+ charges):

Silkscreen, Embroidery, Color Accents, Stitching

Care Instructions:

Cold, regular wash. Tumble dry on low or lay flat to dry. Natural fading over time. No bleach.



Pictured in Olive Cotton Canvas



Olive
Cotton Canvas



Gray
Cotton Canvas





Olive
Cotton Twill





Mid Denim



Dark Denim



*Railroad Stripe
Denim*





Style # A020 | Unisex

Bib Apron, Slide

(Model pictured in British Khaki Cotton Twill)

Pricing

6~10	11~25	26~50	51~99	100+	200+	500+	1000+
\$88	\$69	\$65	\$61	\$56	\$53	\$48	\$47

Sizing

One Size Fits All

Width:	26"	Top Pocket:	6"x6"
Length:	34"	Bottom Pocket:	11.5" x 13"
Neck Strap:	26"		
Waist Straps:	80" (40" each strap)		

Description:

A more classic apron with neck slider for size adjustments. Features a single top patch pocket and 2 hand pockets along the waist. A small welt pocket is also added on the wearer's right side. Twill tape straps standard in black, natural, & white.

Fit:

One size fits all

Material:

(Core) Cotton Twill, Cotton Canvas, Denim

Color Options:

Dark Denim, British Khaki, Mid Denim, Navy, Black, Ecu, Olive, Railroad Stripe. See fabric section for options.

Customization Options (+ charges):

Silkscreen, Embroidery, Color Accents, Stitching

Care Instructions:

Cold, regular wash. Tumble dry on low or lay flat to dry. Natural fading over time. No bleach.



*Pictured in Navy
Cotton Twill*

*Pictured in Olive
Cotton Twill*





Olive Twill



British Khaki Twill



Olive Twill





Style # A019 | Unisex

Bib Apron, Grommet

(Model pictured in Dark Denim)

Pricing

6~10	11~25	26~50	51~99	100+	200+	500+	1000+
\$88	\$69	\$65	\$61	\$56	\$53	\$48	\$47

Sizing

One Size Fits All

Width:	26"	Top Pocket:	6"x6"
Length:	34"	Bottom Pocket:	11.5" x 13"
Neck Strap:	36"		
Waist Straps:	80" (40" each strap)		

Description:

Our classic bib apron with a grommet twist closure. The tie slips in and ties through the grommet for an easier adjustment. Features a single top patch pocket and 2 hand pockets along the waist. A small welt pocket is also added on the wearer's right side.

Fit:

One size fits all

Material:

(Core) Cotton Twill, Cotton Canvas, Denim

Color Options:

Dark Denim, British Khaki, Mid Denim, Navy, Black, Ecru, Olive, Charcoal, Railroad Stripe. See fabric section for options.

Customization Options (+ charges):

Silkscreen, Embroidery, Color Accents, Stitching

Care Instructions:

Cold, regular wash. Tumble dry on low or lay flat to dry. Natural fading over time. No bleach.



Pictured in British Khaki Cotton Twill



Pictured in Dark Denim





British Khaki Twill



Style # A009 | Unisex

Reversible Bib Apron

(Model pictured in Navy Cotton Twill w/ Railroad Denim reverse)

Pricing

6~10	11~25	26~50	51~99	100+	200+	500+	1000+
\$105	\$79	\$75	\$74	\$71	\$65	\$61	\$58

Sizing

One Size Fits All

Width:	26"	Top Pocket:	6"x6"
Length:	34"	Bottom Pocket:	11.5" x 13"
Neck Strap:	26"		
Waist Straps:	80" (40" each strap)		

Description:

Our Bib Apron, Slide (A020) with the option to have a contrasting fabric on the backside. Designed to be worn both ways. Features a single top patch pocket and 2 hand pockets along the waist. A small welt pocket is also added on the wearer's right side.

Fit:

One size fits all

Material:

(Core) Cotton Twill, Cotton Canvas, Denim

Color Options:

Dark Denim, British Khaki, Mid Denim, Navy, Black, Ecru, Olive, Charcoal, Railroad Stripe. See fabric section for options.

Customization Options (+ charges):

Silkscreen, Embroidery, Color Accents, Stitching

Care Instructions:

Cold, regular wash. Tumble dry on low or lay flat to dry. Natural fading over time. No bleach.



*Pictured in Navy Twill
w/ Railroad Denim*





Mix & match any combinations of colors for your perfect front and back.

*British Khaki Twill
w/ Ecrú Twill
reverse*





Style # A008 | Unisex

Detachable Bib Apron

(Model pictured in Navy Cotton Canvas)

Pricing

6~10	11~25	26~50	51~99	100+	200+	500+	1000+
\$135	\$89	\$84	\$81	\$78	\$74	\$69	\$65

Sizing

One Size Fits All

Width:	26"	Fanny Pouch:	13.5"x8"
Length:	34"		
Neck Strap:	25"		
Waist Straps:	80" (40" each strap)		

Description:

A 2-in-1 apron featuring a detachable fanny pouch. The waist ties on the main apron can detach and then reattach to the fanny pouch. Great option when you need a large and small option for service.

Fit:

One size fits all

Material:

(Core) Cotton Twill, Cotton Canvas, Denim

Color Options:

Dark Denim, British Khaki, Mid Denim, Navy, Black, Ecru, Olive, Charcoal, Railroad Stripe. See fabric section for options.

Customization Options (+ charges):

Silkscreen, Embroidery, Color Accents, Stitching

Care Instructions:

Cold, regular wash. Tumble dry on low or lay flat to dry. Natural fading over time. No bleach.



Pictured in Navy Canvas

Pictured in British Khaki Twill





Charcoal Canvas





Navy Canvas





Style # A031 | Unisex

Bib Apron, Leather Straps

(Model pictured in Dark Denim w/ Black Leather)

Pricing

6~10	11~25	26~50	51~99	100+	200+	500+	1000+
\$99	\$84	\$78	\$74	\$69	\$66	\$61	\$56

Sizing

One Size Fits All

Width:	26"	Top Pocket:	6"x6"
Length:	34"	Bottom Pocket:	11.5" x 13"
Neck Strap:	26"		
Waist Straps:	80" (40" each strap)		

Description:

A similar body to all of our bib aprons except this style has a detachable leather neck strap w/ 3 metal buttons. Features a single top patch pocket and 2 hand pockets along the waist. A small zipper pocket is also added on the wearer's right side.

Fit:

One size fits all

Material:

(Core) Cotton Twill, Cotton Canvas, Denim

Color Options:

Dark Denim, British Khaki, Mid Denim, Navy, Black, Ecu, Olive, Charcoal, Railroad Stripe. See fabric section for options.

Customization Options (+ charges):

Silkscreen, Embroidery, Color Accents, Stitching

Care Instructions:

Detach leather straps. Cold, regular wash. Tumble dry on low or lay flat to dry. Natural fading over time.



*Pictured in Dark Denim
w/ Black Leather*





*Black or brown
leather options for
neck strap.*

*Dark Denim w/
Black Leather
Straps*



Style # A032 | Unisex

Crossback Apron

(Model pictured in Ecrú Twill)



Pricing

6~10	11~25	26~50	51~99	100+	200+	500+	1000+
\$92	\$73	\$69	\$65	\$59	\$57	\$52	\$47

Sizing

One Size Fits All

Width:	33.5"	Top Pocket:	4" x 6"
Length:	33.5"	Bottom Pocket:	6.5" x 15.5"
Neck Strap:	85"	Towel Tab:	3/4" x 4.5"
Waist Straps:	85" (42.5" each strap)		

Description:

A classic update on the crossback apron featuring 2 pen pockets on the chest, and 2 patch pockets on the waist. Double grommet construction with webbing for ease of adjustment.

Fit:

One size fits all

Material:

(Core) Cotton Twill, Cotton Canvas, Denim

Color Options:

Dark Denim, British Khaki, Mid Denim, Navy, Black, Ecrú, Olive, Charcoal, Railroad Stripe. See fabric section for options.

Customization Options (+ charges):

Silkscreen, Embroidery, Color Accents, Stitching

Care Instructions:

Cold, regular wash. Tumble dry on low or lay flat to dry. Natural fading over time.

*Pictured in Ecrú Twill*



Olive
Cotton Twill



*Navy
Cotton Twill*



Style # A028 | Unisex

V-Neck Apron

(Model pictured in Black Linen w/ Contrast Ecru Twill Ties)

Pricing

6~10	11~25	26~50	51~99	100+	200+	500+	1000+
\$74	\$59	\$59	\$57	\$55	\$53	\$51	\$49

Sizing

One Size Fits All

Width:	36"	Towel Tab:	3"
Length:	31.5"	Bottom Pocket:	7.5" x 16.5"
Neck Strap:	27"		
Waist Straps:	120" (60" each strap)		

Description:

A more feminine option featuring a V-neck style and neck ties. Straps are intentionally longer so they wrap several times around the waist for a beautiful detail, especially when in a contrast color. Features 2 pockets measuring 7.5"W x 16.5"H each divided by a center seam. A towel tab on the left side.

Fit:

One size fits all

Material:

(Core) Cotton Twill, Cotton Oxford, Denim
(Premium) Baby Twill, Linen, Linen Blend

Color Options:

See fabric section for options (Twill, Oxford, Linen).

Customization Options (+ charges):

Silkscreen, Embroidery, Color Accents, Stitching

Care Instructions:

Cold, regular wash. Tumble dry on low or lay flat to dry.
Natural fading over time. No bleach.



Pictured in Ecru Twill



Pictured in Navy Twill





Ivory Linen



Gray Linen



Pink Oxford



Taupe Oxford



Olive Twill



Black Linen



Navy Twill w/ Olive Ties



British Khaki Twill



Olive Twill



Ecru Oxford



Ecru Twill w/ British Khaki Ties



Gray Linen



Style # A030 | Unisex

MMM Apron

(Model pictured in Ecrú Cotton Twill)

Pricing

6~10	11~25	26~50	51~99	100+	200+	500+	1000+
\$75	\$59	\$59	\$55	\$53	\$51	\$49	\$45

Sizing

One Size Fits All

Length:	34"
Suspender Length:	36-41"

Description:

A sophisticated apron with a long bodice and adjustable shoulder straps that can be criss crossed or worn straight. Features 2 large patch pockets measuring 7.25"W x 8.5"H. A beautiful silhouette that can simply be worn with a white button up shirt for a chic look.

Fit:

One size fits all

Material:

(Core) Cotton Twill, Cotton Canvas

Color Options:

Dark Denim, British Khaki, Mid Denim, Navy, Black, Ecrú, Olive, Charcoal, Railroad Stripe. See fabric section for options.

Customization Options (+ charges):

Silkscreen, Embroidery, Color Accents, Stitching

Care Instructions:

Cold, regular wash. Tumble dry on low or lay flat to dry. Natural fading over time. No bleach.



Picture in Olive Twill



Pictured in Ecrú Twill





Olive
Cotton Twill



*Ecru
Cotton Twill*



*Olive
Cotton Twill*



Style # A022 | Unisex

Taqueria Apron

(Model pictured in Navy Cotton Oxford)

Pricing

6~10	11~25	26~50	51~99	100+	200+	500+	1000+
\$73	\$53	\$53	\$49	\$48	\$47	\$46	\$41

Sizing

One Size Fits All

Width:	26.5"
Length:	27"
Waist Straps:	84" (42" each strap)

Description:

This apron pays homage to the taqueros and taqueras all throughout past and present day LA. They're somewhat thin, lightweight, wide on top, short on bottom...all for maximum comfort and mobility. Originally designed in collaboration with Chef Roy Choi for Kogi BBQ.

Fit:

One size fits all

Material:

(Core) Cotton Oxford
(Premium) Linen, Linen Blend

Color Options:

Custom colors available upon request.

Customization Options (+ charges):

Silkscreen, Embroidery, Color Accents, Stitching

Care Instructions:

Cold, regular wash. Tumble dry on low or lay flat to dry. Natural fading over time. No bleach.



*Pictured in Red
Linen Blend*

*Pictured in Navy
Cotton Oxford*





Red Linen Blend



Yellow Cotton Oxford





Style # A003 | Unisex

Full Apron, Welt

(Model pictured in Ecru Cotton Twill)

Pricing

6~10	11~25	26~50	51~99	100+	200+	500+	1000+
\$81	\$54	\$54	\$46	\$41	\$36	\$34	\$31

Sizing

One Size Fits All

Width:	28"
Length:	25"
Waist Straps:	80" (40" each strap)

Description:

A clean and modern update on the apron. Instead of the traditional patch pocket, this apron features a single welt pocket measuring 5.25" wide and 7.5" deep on wearer's right side.

Fit:

One size fits all

Material:

(Core) Cotton Twill, Cotton Canvas, Denim

(Premium) Linen, Linen Blend

Color Options:

Dark Denim, British Khaki, Mid Denim, Navy, Black, Ecru, Olive, Railroad Stripe. See fabric section for options.

Customization Options (+ charges):

Silkscreen, Embroidery, Color Accents, Stitching

Care Instructions:

Cold, regular wash. Tumble dry on low or lay flat to dry. Natural fading over time. No bleach.



*Pictured in British Khaki
Cotton Twill*



Pictured in Mid Denim





Dark Denim



*Navy
Cotton Twill*





Style # A029 | Unisex

Full Apron, Big Patch Pocket

(Model pictured in Dark Denim)

Pricing

6~10	11~25	26~50	51~99	100+	200+	500+	1000+
\$81	\$54	\$54	\$46	\$41	\$36	\$34	\$31

Sizing

One Size Fits All

Width: 28"
 Length: 25"
 Waist Straps: 80" (40" each strap)

Description:

A simplified full apron featuring 1 large patch pocket on the wearer's right that measures 8.25"W x 8"H. The pocket's size and simplicity is designed to accommodate a check presenter or POS system. Can also be made in the half length.

Fit:

One size fits all

Material:

(Core) Cotton Twill, Cotton Canvas, Denim
 (Premium) Linen, Linen Blend

Color Options:

Dark Denim, British Khaki, Mid Denim, Navy, Black, Ecru, Olive, Railroad Stripe. See fabric section for options.

Customization Options (+ charges):

Silkscreen, Embroidery, Color Accents, Stitching

Care Instructions:

Cold, regular wash. Tumble dry on low or lay flat to dry. Natural fading over time. No bleach.



Pictured in Olive Cotton Twill



Pictured in British Khaki Cotton Twill





Olive
Cotton Twill



Style # A033 | Unisex

Full Apron, Combo Pocket

(Model pictured in Ecrú Twill w/Jade Accents)



Pricing

6~10	11~25	26~50	51~99	100+	200+	500+	1000+
\$82	\$55	\$55	\$47	\$42	\$37	\$35	\$32

Sizing

One Size Fits All

Width:	28"
Length:	25"
Waist Straps:	80" (40" each strap)
Welt Pocket:	4"
Patch Pocket:	6" x 6"

Description:

Our classic Full Apron. Except this version features both the discreet welt pocket (right) as well as a patch pocket (left). As pictured, this style is a great palette for color customization.

Fit:

One size fits all

Material:

(Core) Cotton Twill, Cotton Canvas, Denim
(Premium) Linen, Linen Blend

Color Options:

Dark Denim, British Khaki, Mid Denim, Navy, Black, Ecrú, Olive, Charcoal, Railroad Stripe. See fabric section for options.

Customization Options (+ charges):

Silkscreen, Embroidery, Color Accents, Stitching

Care Instructions:

Cold, regular wash. Tumble dry on low or lay flat to dry. Natural fading over time. No bleach.





Style # A004 | Unisex

Half Apron, Welt

(Model pictured in Dark Denim)

Pricing

6~10	11~25	26~50	51~99	100+	200+	500+	1000+
\$79	\$52	\$52	\$44	\$39	\$34	\$32	\$29

Sizing

One Size Fits All

Width:	28"
Length:	21"
Waist Straps:	80" (40" each strap)

Description:

A clean and modern update on the apron. Instead of the traditional patch pocket, this apron features a single welt pocket measuring 5.25" wide and 7.5" deep. Same construction as Full Apron, just 7" shorter.

Fit:

One size fits all

Material:

(Core) Cotton Twill, Cotton Canvas, Denim
(Premium) Linen, Linen Blend

Color Options:

Dark Denim, British Khaki, Mid Denim, Navy, Black, Ecu, Olive, Charcoal, Railroad Stripe. See fabric section for options.

Customization Options (+ charges):

Silkscreen, Embroidery, Color Accents, Stitching

Care Instructions:

Cold, regular wash. Tumble dry on low or lay flat to dry. Natural fading over time. No bleach.



*Pictured in Olive
Cotton Twill*



*Pictured in Ecu
Cotton Twill*





Style # A005 | Unisex

Half Apron, Patch

(Model pictured in Navy Cotton Twill)

Pricing

6~10	11~25	26~50	51~99	100+	200+	500+	1000+
\$79	\$52	\$52	\$44	\$39	\$34	\$32	\$29

Sizing

One Size Fits All

Width: 28"
 Length: 21"
 Waist Straps: 80" (40" each strap)

Bottom Pocket: 11.5" x 13"

Description:

2 angled patch pockets measuring 7" wide and 10" deep. Small zipper pocket on wearer's right patch pocket. Tonal ties. Gold hardware (silver option).

Fit:

One size fits all

Material:

(Core)Cotton Twill, Cotton Canvas, Denim

Color Options:

Dark Denim, British Khaki, Mid Denim, Navy, Black, Ecrú, Olive, Charcoal, Railroad Stripe. See fabric section for options.

Customization Options (+ charges):

Silkscreen, Embroidery, Color Accents, Stitching

Care Instructions:

Cold, regular wash. Tumble dry on low or lay flat to dry. Natural fading over time. No bleach.



Pictured in Railroad Denim



Pictured in Dark Denim





Style # A011 | Unisex

Half Apron, Toast Pocket

(Model pictured in British Khaki Cotton Twill)

Pricing

6~10	11~25	26~50	51~99	100+	200+	500+	1000+
\$79	\$52	\$52	\$44	\$39	\$34	\$32	\$29

Sizing

One Size Fits All

Width:	28"
Length:	21"
Waist Straps:	80" (40" each strap)
Right Pocket:	6" x 7"
Left Pocket:	6" x 7"
Pen Pocket:	1"

Description:

Our Half Apron (A004) made specifically to fit your Toast POS systems. The kangaroo pockets were designed to perfectly fit your new best friend on shift, the Toast pad.

Fit:

One size fits all

Material:

(Core) Cotton Twill, Cotton Canvas, Denim

Color Options:

Dark Denim, British Khaki, Mid Denim, Navy, Black, Ecu, Olive, Charcoal, Railroad Stripe. See fabric section for options.

Customization Options (+ charges):

Silkscreen, Embroidery, Color Accents, Stitching

Care Instructions:

Cold, regular wash. Tumble dry on low or lay flat to dry. Natural fading over time. No bleach.



Pictured in Terracotta Cotton Twill

Pictured in Olive Cotton Twill





Olive Twill



Navy Twill



Customized for color and trim. Added bar tack stitches & pen slot. Added charges.



Terracotta Twill



Dark Denim





Style # A021 | Unisex

Half Apron, Combo Pocket

(Model pictured in Ecrú Cotton Twill w/ Peach)

Pricing

6~10	11~25	26~50	51~99	100+	200+	500+	1000+
\$80	\$53	\$53	\$45	\$40	\$35	\$33	\$30

Sizing

One Size Fits All

Width:	28"
Length:	21"
Waist Straps:	80" (40" each strap)
Patch Pocket:	6" x 6"

Description:

Our classic Half Apron. Except this version features both the discreet welt pocket (right) as well as a patch pocket (left). As pictured, this style is a great palette for color customization.

Fit:

One size fits all

Material:

(Core) Cotton Twill, Cotton Canvas, Denim
(Premium) Linen, Linen Blend

Color Options:

Dark Denim, British Khaki, Mid Denim, Navy, Black, Ecrú, Olive, Charcoal, Railroad Stripe. See fabric section for options.

Customization Options (+ charges):

Silkscreen, Embroidery, Color Accents, Stitching

Care Instructions:

Cold, regular wash. Tumble dry on low or lay flat to dry. Natural fading over time. No bleach.



*Pictured in Ecrú Twill w/
Peach Accents*





Style # A010 | Unisex

Reversible Half Apron

(Model pictured in Navy Cotton Twill w/ Railroad Denim reverse)

Pricing

6~10	11~25	26~50	51~99	100+	200+	500+	1000+
\$95	\$65	\$59	\$56	\$54	\$53	\$49	\$45

Sizing

One Size Fits All

Width:	28"
Length:	23"
Waist Straps:	80" (40" each strap)

Description:

Here you have the option to add a contrasting color/ pattern to the backside for a pop of personality. A clean and modern update on the apron. Instead of the traditional patch pocket, this apron features a single welt pocket measuring 5.25" wide and 7.5" deep.

Fit:

One size fits all

Material:

(Core) Cotton Twill, Cotton Canvas, Denim
 (Premium) Linen, Linen Blend

Color Options:

Dark Denim, British Khaki, Mid Denim, Navy, Black, Ecrú, Olive, Charcoal, Railroad Stripe. See fabric section for options.

Customization Options (+ charges):

Silkscreen, Embroidery, Color Accents, Stitching

Care Instructions:

Cold, regular wash. Tumble dry on low or lay flat to dry. Natural fading over time. No bleach.



Pictured in Navy Twill w/ Railroad Denim





Style # A006 | Unisex

Long Apron, Welt

(Model pictured in White Linen)

Pricing

6~10	11~25	26~50	51~99	100+	200+	500+	1000+
\$86	\$55	\$48	\$45	\$43	\$39	\$36	\$34

Sizing

One Size Fits All

Width:	28"
Length:	35"
Waist Straps:	80" (40" each strap)

Description:

Classic French bistro style apron. Ankle length. Single welt pocket measuring 5.25" wide and 7.5" deep on wearer's right side.

Fit:

One size fits all

Material:

(Core) Cotton Oxford

(Premium) Linen, Linen Blend

Color Options:

White, Ecu, Black, Navy. See fabric section for options.

Customization Options (+ charges):

Silkscreen, Embroidery, Color Accents, Stitching

Care Instructions:

Cold, regular wash. Tumble dry on low or lay flat to dry. Natural fading over time. No bleach.



Pictured in Ecu Linen





Style # A007 | Unisex

Short Apron

(Model pictured in Navy Cotton Twill)

Pricing

6~10	11~25	26~50	51~99	100+	200+	500+	1000+
\$74	\$49	\$49	\$44	\$39	\$38	\$35	\$34

Sizing

One Size Fits All

Width:	25"
Length:	19"
Waist Straps:	42" (21" each strap)

Description:

Our smallest apron made specifically for more active roles that involve a lot of crouching, bending and low-lying work. Perfect for housekeeping. Features wider waist straps and 2 wider side hand pockets. The rounded bottom hem softens this piece.

Fit:

One size fits all

Material:

(Core) Cotton Twill, Cotton Canvas, Denim

Color Options:

Dark Denim, British Khaki, Mid Denim, Navy, Black, Ecu, Olive, Charcoal, Railroad Stripe. See fabric section for options.

Customization Options (+ charges):

Silkscreen, Embroidery, Color Accents, Stitching

Care Instructions:

Cold, regular wash. Tumble dry on low or lay flat to dry. Natural fading over time. No bleach.



Pictured in Navy Cotton Twill





*Dusty Pink
Cotton Twill*





Style # A025 | Unisex

Fanny Pack Apron

(Model pictured in Navy Cotton Twill)

Pricing

6~10	11~25	26~50	51~99	100+	200+	500+	1000+
\$59	\$46	\$39	\$38	\$37	\$36	\$33	\$32

Sizing

One Size Fits All

Width:	13.5"
Height:	8"
Waist Straps:	80" (40" each strap)

Description:

A compact apron that functions more as a small fanny pack to carry only the most essential of items while on shift. 2 snap closures for the straps (which can be taken off so it can be used like a clutch bag). Features 2 pen pockets and 2 bigger pockets measuring 5" x 7.25".

Fit:

One size fits all

Material:

(Core) Cotton Twill, Cotton Canvas, Denim

Color Options:

Dark Denim, British Khaki, Mid Denim, Navy, Black, Ecru, Olive, Charcoal, Railroad Stripe. See fabric section for options.

Customization Options (+ charges):

Silkscreen, Embroidery, Color Accents, Stitching

Care Instructions:

Cold, regular wash. Tumble dry on low or lay flat to dry. Natural fading over time. No bleach.



Pictured in Black Cotton Twill

Pictured in British Khaki Cotton Twill





*Pictured in Charcoal
Cotton Canvas w/ Black Straps*





ROBES





Style # UR001 | Unisex

Shawl Collar Robe

(Model pictured in Railroad Stripe Denim w/ Contrast Lining)

Pricing

6~10	11~25	26~50	51~99	100+	200+	500+	1000+
\$215	\$98	\$89	\$86	\$79	\$75	\$69	\$65

* Contrast lining is additional cost (as pictured)

Sizing

One Size Fits All

Chest:	52"
Sleeve:	25"
Shoulder:	23"
Length:	47"



Pictured in Railroad Stripe Denim w/ Contrast Lining

Description:

This shawl collar robe is designed as a piece for everyone- oversized and comfortable. It features a wide shawl collar and a dropped shoulder. 2 large pockets & a wide belt finish this piece off. *The robe pictured has a contrasting cuff and hem lining (additional cost).*

Fit:

Unisex sizing that runs large

Material:

(Core) Cotton Twill, Denim, French Terry
(Premium) Linen, Linen Blend

Color Options:

See fabric section for options.

Customization Options (+ charges):

Silkscreen, Embroidery, Color Accents, Stitching

Care Instructions:

Cold, regular wash. Tumble dry on low or lay flat to dry. Natural fading over time. No bleach.





*Railroad Stripe Denim w/
Navy & White Polka Dot Lining*





*Light Indigo
w/ Medium Indigo Cuffs*





Style # UR002 | Unisex

Kimono Robe

(Model pictured in Moroccan Blue Cotton Oxford)

Pricing

6~10	11~25	26~50	51~99	100+	200+	500+	1000+
\$235	\$98	\$73	\$69	\$67	\$66	\$64	\$59

Sizing

One Size Fits All

Chest:	54"
Sleeve:	12"
Shoulder:	30.5"
Length:	44"



Pictured in Moroccan Blue Cotton Oxford

Description:

Our kimono robe is designed as a lightweight option for cooler climates. The cotton oxford is a mid weight material that is soft and hangs beautifully when worn. 2 large patch pockets are deep enough for your key card, phone, and cash.

Fit:

Unisex sizing that runs just a little loose

Material:

(Core) Cotton Oxford
(Premium) Linen, Linen Blend

Color Options:

See fabric section for options. Custom dyes available.

Customization Options (+ charges):

Silkscreen, Embroidery, Color Accents, Stitching

Care Instructions:

Cold, regular wash. Tumble dry on low or lay flat to dry. Natural fading over time. No bleach.





Black
Cotton Oxford



Terracotta
Cotton Oxford





Tangerine
Cotton Oxford



Plum
Cotton Oxford





*Custom Print
Green/White Stripe
(minimums apply)*





Style # UR003 | Unisex

Hooded Robe

(Model pictured in Gray Fleece)

Pricing

6~10	11~25	26~50	51~99	100+	200+	500+	1000+
\$254	\$97	\$92	\$89	\$87	\$82	\$77	\$72

Sizing

One Size Fits All

Chest:	48"
Sleeve:	25"
Shoulder:	20"
Length:	45.5"

Description:

A more casual robe option with hood and wide ties. Made of French terry, this piece has a luxe soft hand feel and provides a cozy lounging experience. 2 side pockets perfect for the few essentials needed to visit the spa or pool.

Fit:

Unisex sizing that runs big

Material:

(Core) Fleece, French Terry

Color Options:

Gray, Cream, Custom Dyed (extra charge)

Customization Options (+ charges):

Silkscreen, Embroidery, Color Accents, Stitching

Care Instructions:

Cold, regular wash. Tumble dry on low or lay flat to dry. Natural fading over time. No bleach.



Pictured in Gray Fleece



Pictured in Cream Fleece





Gray French Terry



White French Terry



ACCESSORIES

HOTEL ZENA HOTEL ZENA HOTEL ZENA
HOTEL ZENA HOTEL ZENA HOTEL ZENA



Style # A017 | Unisex

Boutonniere

(Pictured in Yellow Plaid Cotton)



Pricing

6~10	11~25	26~50	51~99	100+	200+	500+	1000+
\$26	\$22	\$22	\$22	\$19	\$18	\$17	\$16

Sizing

One Size Fits All

Length: 1.5"
Width: 1.5"

Overall height with pin is 2.5"



Description:

A beautiful alternative to a traditional metal lapel pin. This boutonniere is made of fabric hand-wrapped to look like a flower. An elongated pin is fastened to the back that pins neatly onto your uniform.

Fit:

N/A

Material:

(Core) Cotton, Wool
(Premium) Linen, Linen Blend

Color Options:

Fully custom

Customization Options (+ charges):

None recommended

Care Instructions:

Spot clean or dry clean



Pictured in Red Cotton





Style # A018 | Unisex

Bandana

(Pictured in 2 Custom Prints)



Pricing

6~10 11~25 26~50 51~99 100+ 200+ 500+ 1000+

Pricing is dependent on final custom design

Sizing

One Size Fits All

Length: 24"

Width: 24"

Description:

Use as an all-staff signifier. A democratizing piece that everyone can wear. Also allows personalization in the individual styling options.

Fit:

Standard

Material:

Cotton Poplin, Cotton Voile

Color Options:

Fully custom

Customization Options (+ charges):

Printing of custom design available (+ charge)

Care Instructions:

Cold, regular wash. Tumble dry on low or lay flat to dry. Natural fading over time. No bleach.



Custom Print on Orange Garment Dye



Custom Print on Blue Garment Dye



Style # A023 | Unisex

Tool Belt

(Pictured in Natural Cotton Canvas)



Pricing

6~10	11~25	26~50	51~99	100+	200+	500+	1000+
\$89	\$69	\$69	\$65	\$62	\$57	\$51	\$47

Sizing

One Size Fits All

Length:	11"
Width:	19"
Straps:	52" (26" each side)

Description:

A beautiful tool belt as a cool alternative to an apron. Adjustable plastic clasp closure. 2 large pockets measuring 8" wide. A narrow center pocket in between measuring 2" perfect for a couple pens. A loop on the left side for clasping small items.

Fit:

One Size Fits All

Material:

(Core) Cotton Twill, Cotton Canvas, Denim

Color Options:

Dark Denim, British Khaki, Mid Denim, Navy, Black, Ecru, Olive, Charcoal, Railroad Stripe. See fabric section for options.

Customization Options (+ charges):

Embroidery, Silkscreen, Patches

Care Instructions:

Cold, regular wash. Tumble dry on low or lay flat to dry. Natural fading over time. No bleach.

*Pictured in Black Cotton Canvas*



Natural
Cotton Canvas





*Black
Cotton Canvas*



Style # A024 | Unisex

Bucket Hat

(Pictured in Khaki Cotton)



Pricing

6~10	11~25	26~50	51~99	100+	200+	500+	1000+
\$29	\$25	\$25	\$23	\$22	\$19	\$18	\$17

Sizing

Medium:	22 - 22 1/2" Head Size 7 - 7 1/8" Hat Size
Large:	22 3/4 - 23" Head Size 7 1/4 - 7 3/8" Hat Size

Description:

A classic, casual bucket hat. 4 embroidered eyelets. Matching crown & fabric sweatband.

Fit:

Standard Size

Material:

(Core) 100% Garment Washed Combed Cotton

Color Options:

Khaki, Olive, Charcoal, Navy, Black

Customization Options (+ charges):

Embroidery, Silkscreen, Patches

Care Instructions:

Cold, regular wash. Tumble dry on low or lay flat to dry. Natural fading over time. No bleach.



Khaki



Olive



Charcoal



Navy



Black



Olive
Cotton



Khaki
Cotton



Khaki
Cotton



Style # A026 | Unisex

Gift Tote

(Pictured in Natural Cotton Canvas)



Pricing

6~10	11~25	26~50	51~99	100+	200+	500+	1000+
\$27	\$22	\$20	\$18	\$17	\$15	\$14	\$12

Sizing

One Size Fits All

Height:	12"
Width:	14"
Depth:	5.25"
Handles:	22"

Description:

A perfect size catch-all tote in heavy canvas with web handles. The side pocket can store anything from a magazine to keys or phone. The full side and bottom gusset gives your bag shape and support at all times.

Fit:

One Size Fits All

Material:

(Core) Cotton Canvas

Color Options:

Natural, Black, Navy, Red, Royal Blue, Chocolate

Customization Options (+ charges):

Embroidery, Silkscreen, Patches

Care Instructions:

Cold, regular wash. Tumble dry on low or lay flat to dry. Natural fading over time. No bleach.



Style # A027 | Unisex

Beach Tote

(Pictured in Natural Cotton Canvas)



Pricing

6~10	11~25	26~50	51~99	100+	200+	500+	1000+
\$35	\$27	\$25	\$22	\$21	\$20	\$18	\$16

Sizing

One Size Fits All

Height:	14.5"
Width:	14"
Depth:	5.5"
Handles:	16"

Approximately 1,116 cubic inches

Description:

Made of durable 10 oz 100% cotton twill. The thick wide straps give this bag the ability to hold just about anything you need from groceries to a day at the beach or pool. Exterior pocket perfect for easy grab and go items such as phone or keys.

Fit:

One Size Fits All

Material:

(Core) Cotton Canvas

Color Options:

Natural. Custom dyes (+charge)

Customization Options (+ charges):

Embroidery, Silkscreen, Patches

Care Instructions:

Cold, regular wash. Tumble dry on low or lay flat to dry. Natural fading over time. No bleach.



Style # A012 | Unisex

Slim Necktie

(Pictured in Navy Linen)



Pricing

6~10	11~25	26~50	51~99	100+	200+	500+	1000+
\$30	\$28	\$28	\$28	\$26	\$25	\$24	\$23

Sizing

One Size Fits All

Length: 55.5"
Width: 2.5"

Description:

A slightly slimmer necktie than your father's. But not so slim that you have to be in your '20s to pull off. Just the right amount of style to be universally cool for that occasion where a tie is called for.

Fit:

Slim profile

Material:

(Core) Cotton, Wool
(Premium) Linen, Linen Blend

Color Options:

Black, Navy, Gray, White. See fabric section for options.

Customization Options (+ charges):

Silkscreen, Embroidery, Color Accents, Stitching

Care Instructions:

Spot clean or dry clean.



Pictured in Black Linen



Pictured in Dark Denim



Style # A013 | Unisex

Bow Tie, Self Tie

(Pictured in Navy & White Linen)

Pricing

6~10	11~25	26~50	51~99	100+	200+	500+	1000+
\$27	\$21	\$21	\$21	\$19	\$17	\$16	\$14

Sizing

One Size Fits All

Length:	2.5"
Width:	4.5"

Adjustable Neck Size from 13.75" - 18"



Description:

A slightly slimmer bow tie than your grandfather's. It's just slim enough to look right on any girl or guy and has just the right amount of style to be universally cool for that occasion when you need to dress it up.

Fit:

Slim profile

Material:

(Core) Cotton, Wool
(Premium) Linen, Linen Blend

Color Options:

Black, Navy, Gray, White. See fabric section for options.

Customization Options (+ charges):

None recommended

Care Instructions:

Spot clean or dry clean.



Pictured in White Linen

Pictured in Navy Linen



Style # A014 | Unisex

Bow Tie, Pre-Tied

(Pictured in Navy Linen)



Pricing

6~10	11~25	26~50	51~99	100+	200+	500+	1000+
\$30	\$24	\$24	\$24	\$22	\$20	\$19	\$17

Sizing

One Size Fits All

Length: 2.5"

Width: 4.5"

Adjustable Neck Size from 12.5 - 21.5"

Description:

A pre-tied version to make things easier on everyone. A slightly slimmer bow tie than your grandfather's. It's just slim enough to look right on any girl or guy and has just the right amount of style to be universally cool for that occasion when you need to dress it up.

Fit:

Slim profile

Material:

(Core) Cotton, Wool

(Premium) Linen, Linen Blend

Color Options:

Black, Navy, Gray, White. See fabric section for options.

Customization Options (+ charges):

None recommended

Care Instructions:

Spot clean or dry clean.

*Pictured in White Linen*

Style # A015 | Unisex

Skinny Bow Tie, Pre-Tied

(Pictured in Navy Linen)



Pricing

6~10	11~25	26~50	51~99	100+	200+	500+	1000+
\$28	\$24	\$24	\$24	\$22	\$20	\$19	\$17

Sizing

One Size Fits All

Length:	1.25"
Width:	4.5"

Adjustable Neck Size from 12.5 - 21"



Description:

A really slim bow tie. Way cooler than your parents. Very modern. A style that fits well on smaller frames or when you want to really push the boundaries of cool.

Fit:

Very slim profile

Material:

(Core) Cotton, Wool
(Premium) Linen, Linen Blend

Color Options:

Black, Navy, Gray, White. See fabric section for options.

Customization Options (+ charges):

None recommended

Care Instructions:

Spot clean or dry clean .



Pictured in Navy Linen



Style # A016 | Unisex

Pocket Square

(Pictured in White Cotton)



Pricing

6~10	11~25	26~50	51~99	100+	200+	500+	1000+
\$16	\$11	\$11	\$10	\$10	\$9	\$9	\$8

Sizing

One Size Fits All

Length: 12"

Width: 12"

Description:

A classic pocket square to add a pop of personality to any suit. Fully customizable.

Fit:

Standard

Material:

(Core) Cotton

(Premium) Linen, Linen Blend, Silk

Color Options:

White, Chambray, Black, Navy. See fabric section for options.

Customization Options (+ charges):

Silkscreen, Embroidery, Stitching, Piping

Care Instructions:

Cold, regular wash. Tumble dry on low or lay flat to dry. Natural fading over time. No bleach.



*Pictured in White Cotton
w/ Navy Piping*

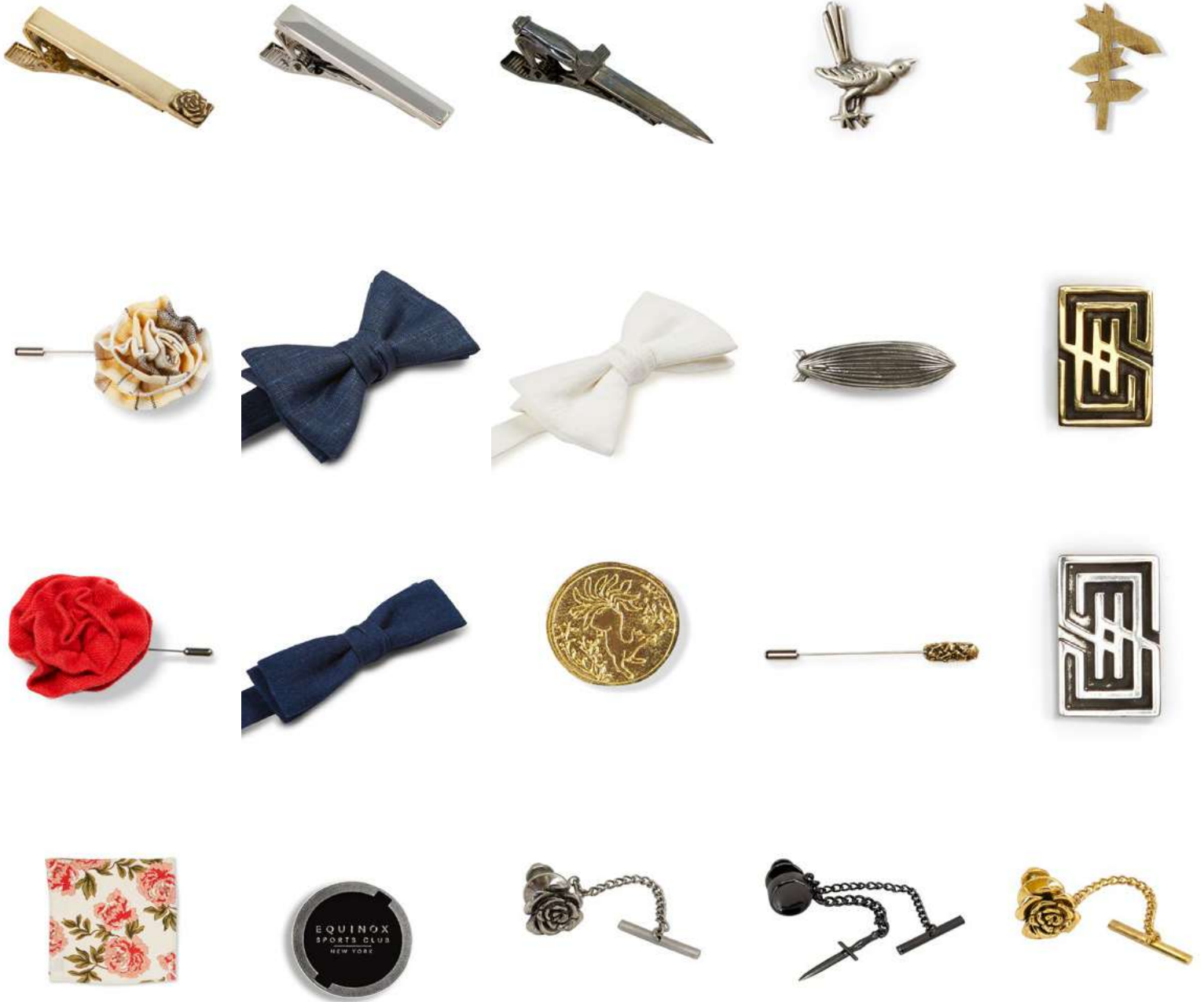


Pictured in Chambray



Custom Accessories

Finery has a custom accessories program. Our studio works with clients to design and manufacture those finishing touches that pull an outfit together. With a clientele as discerning as yours whose guests notice every detail, it's often these little bespoke pieces that have the biggest impact. Please inquire with your Finery rep to discuss custom designs. Below are examples of custom ties, bowties, tie bars, tie pins, lapel pins, and boutonnières.



Custom Merchandise

Finery has a custom merch program. It came about when guests began asking if they could purchase our uniforms. From there it grew into a fully-fledged program offering just about any textile-based category. Whether you're looking to compliment your uniform program or are looking for a standalone merch program for retail, Finery can be your one-stop shop.

An example here of a custom retail program with Moët & Chandon (LVMH).





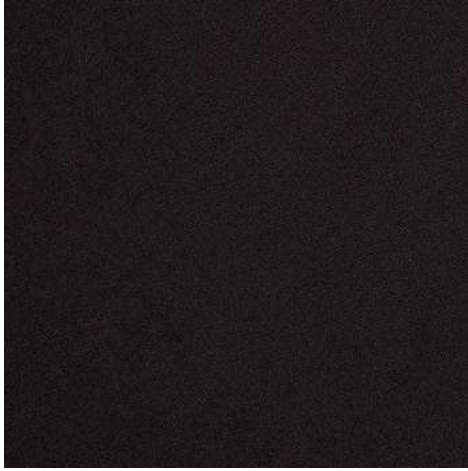
FABRICS



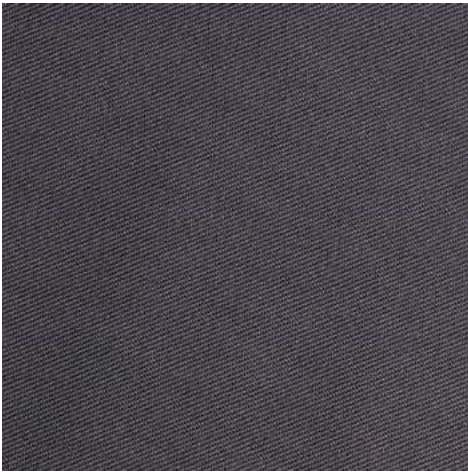
CORE

All Core fabrics are locally stocked and much more readily available for immediate orders. Core fabrics are also priced as listed with no up charges.

COTTON TWILL



Black



Charcoal

Fabric Type: Cotton Twill

Content: 100% Cotton

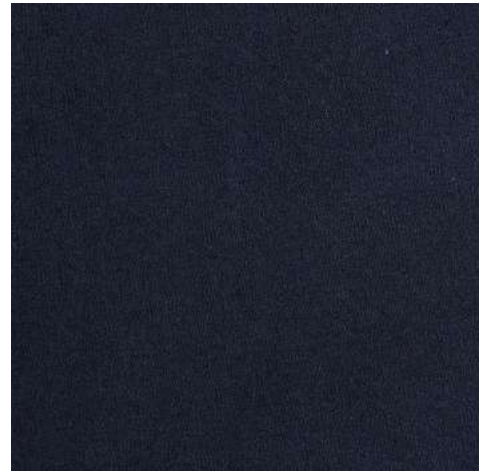
Weight: 7 oz / sq yd

Washing: Machine wash cold, do not bleach, wash dark colors separately, dry gentle cycle low heat, or dry clean. Natural fading over time.

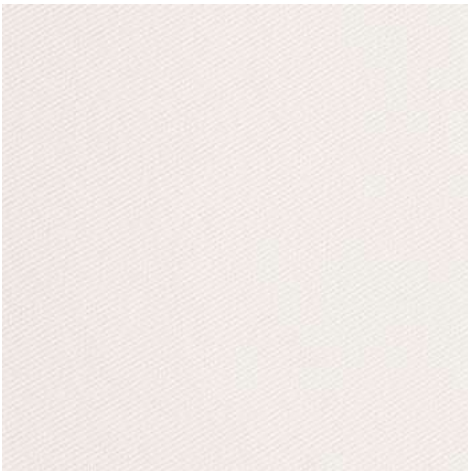
Recommended Silhouettes:

Workwear Coat, Sack Coat, Patch Pocket Blazer, Kimono Coat, Pants, Shorts, Suiting, Aprons

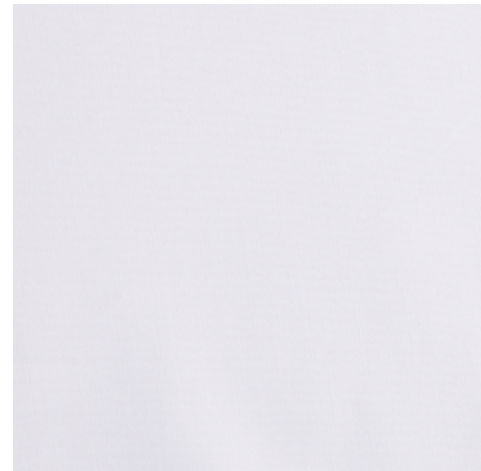
* Twill w/ 2% Lycra also available for some colors.



Navy



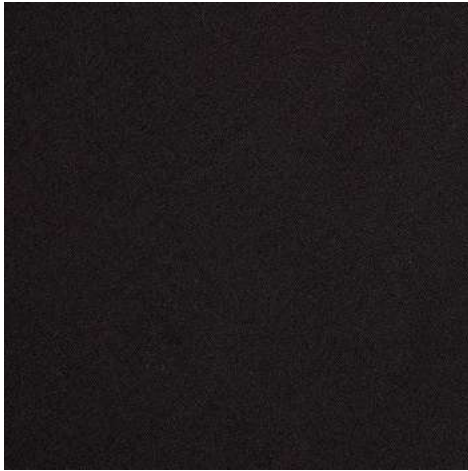
Off White



White



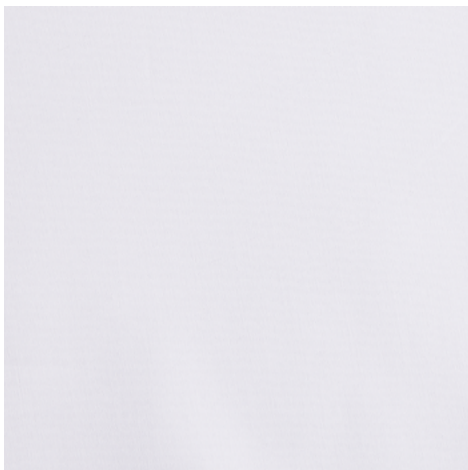
COTTON POPLIN



Black



Navy



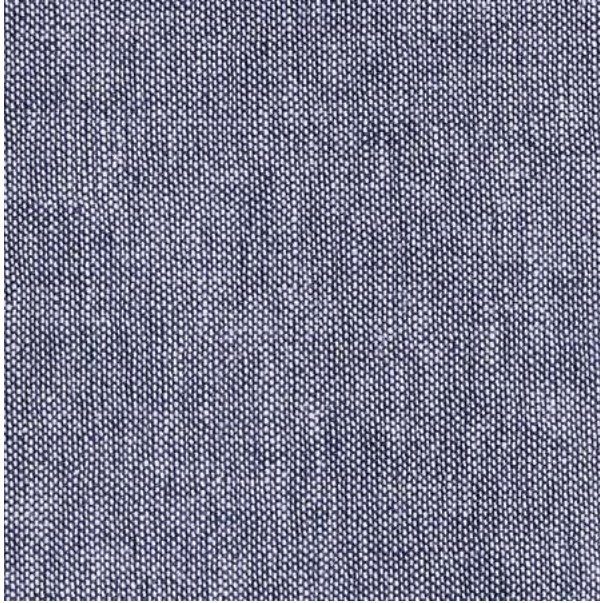
White

Fabric Type: Cotton Poplin
Content: 100% Cotton
Weight: 3.5 oz / sq yd
Washing: Machine wash cold, do not bleach, wash dark colors separately, dry gentle cycle low heat, or dry clean. Natural fading over time.

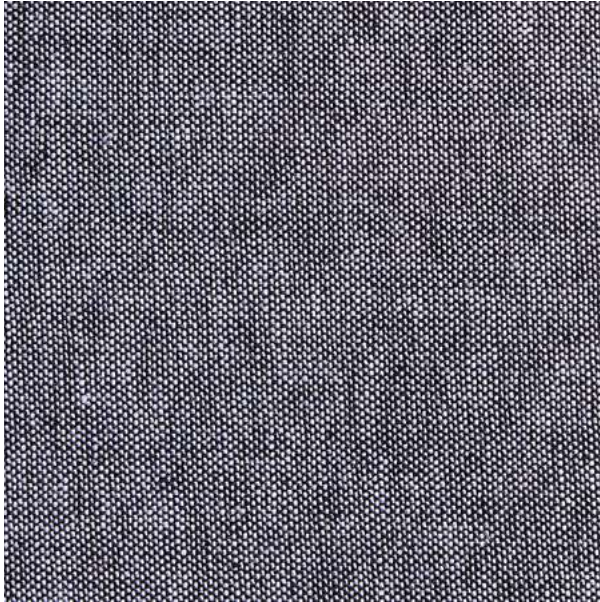
Recommended Silhouettes:
Shirting, Shirt Dress



CHAMBRAY



Blue



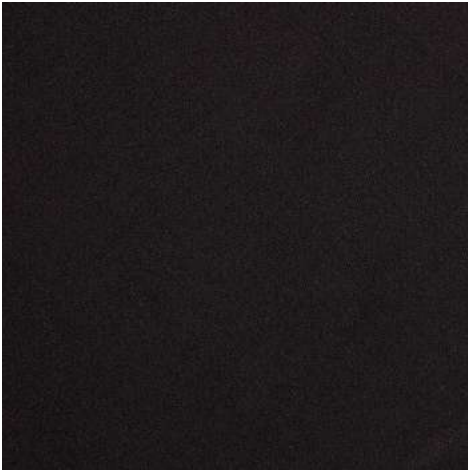
Gray

Fabric Type: Cotton Oxford
Content: 100% Cotton
Weight: 3.5 oz / sq yd
Washing: Machine wash cold, do not bleach, wash dark colors separately, dry gentle cycle low heat, or dry clean. Natural fading over time.

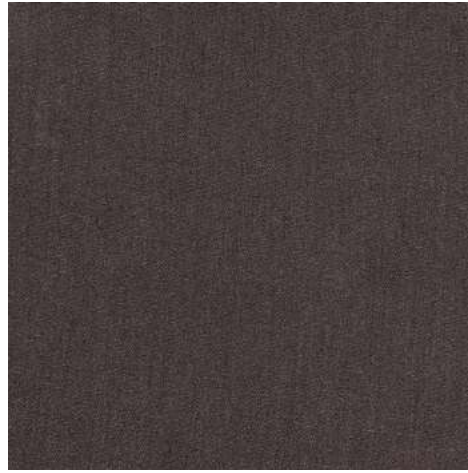
Recommended Silhouettes:
Shirting, Shirt Dress, Metier Coat



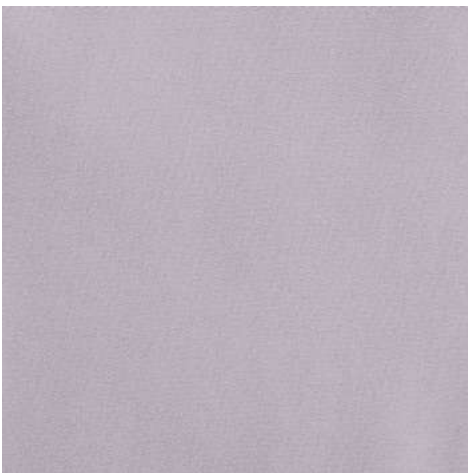
POLY COTTON



Black



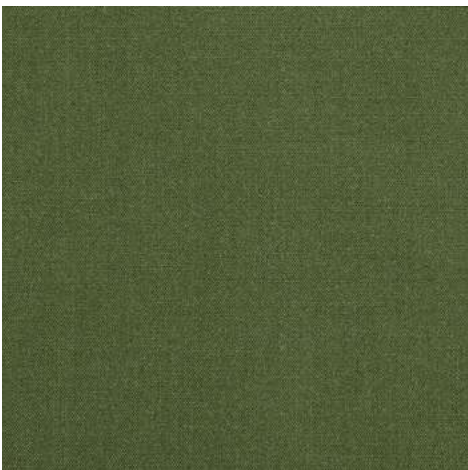
Charcoal



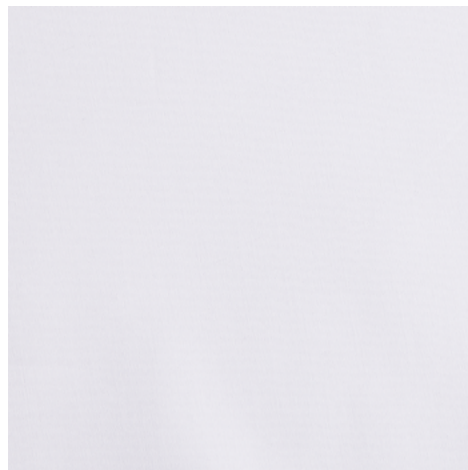
Gray



Navy



Olive



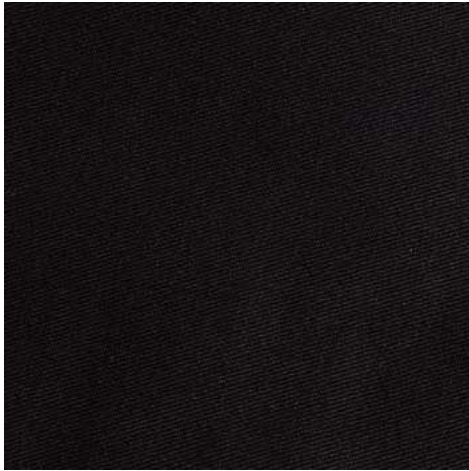
White

Fabric Type: Poly Cotton
Content: 80% Poly / 20% Cotton
Weight: 3.5 oz / sq yd
Washing: Machine wash cold, do not bleach, wash dark colors separately, dry gentle cycle low heat, or dry clean. Natural fading over time.

Recommended Silhouettes:
Shirting, Shirt Dress



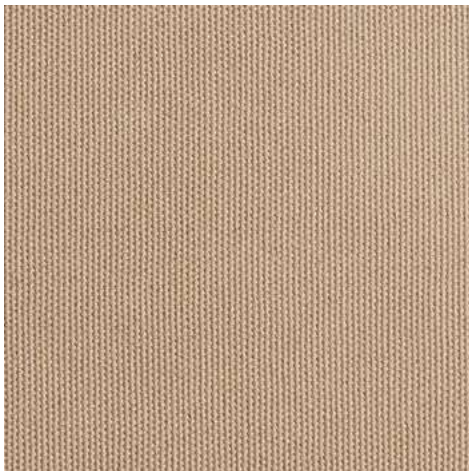
COTTON CANVAS



Black



Charcoal



Khaki



Navy

Fabric Type: Cotton Canvas

Content: 100% Cotton

Weight: 12 oz / sq yd

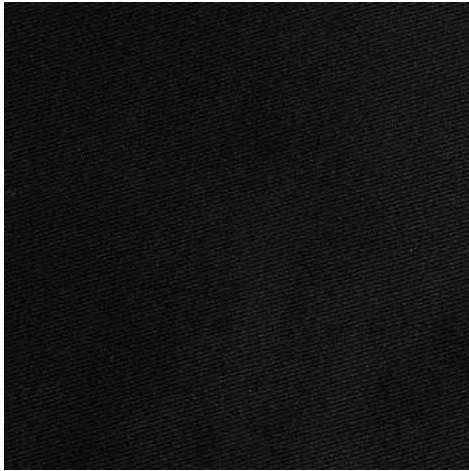
Washing: Machine wash cold, do not bleach, wash dark colors separately, dry gentle cycle low heat, or dry clean. Natural fading over time.

Recommended Silhouettes:

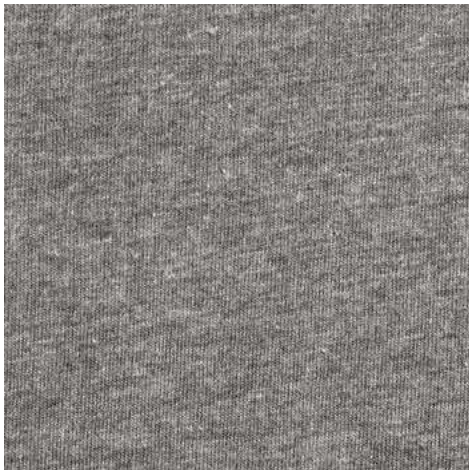
Bomber Jacket, Sack Coat, Patch Pocket Blazer, Kimono Coat, Pants, Shorts, Aprons



COTTON JERSEY



Black



Heather Gray



Navy



White

Fabric Type: Cotton Jersey
Content: 100% Cotton
Weight: 30 single
Washing: Machine wash cold, do not bleach, wash dark colors separately, dry gentle cycle low heat, or dry clean. Natural fading over time.

Recommended Silhouettes:
T-Shirt, Sweatshirt, Henley



NYLON



Black



Navy

Fabric Type: Nylon

Content: 100% Nylon

Weight: 3 oz / sq yd

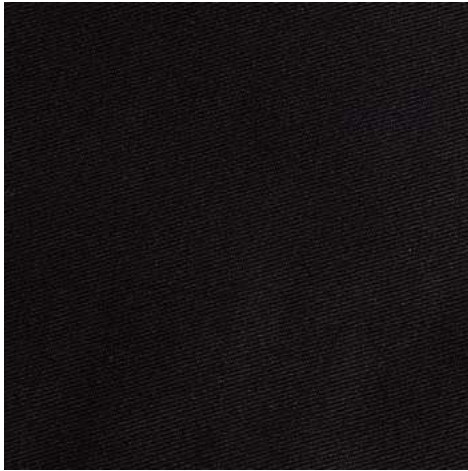
Washing: Machine wash cold, do not bleach, wash dark colors separately, dry gentle cycle low heat, or dry clean. Natural fading over time.

Recommended Silhouettes:

Bomber Jacket, Raincoat, Rain Jacket



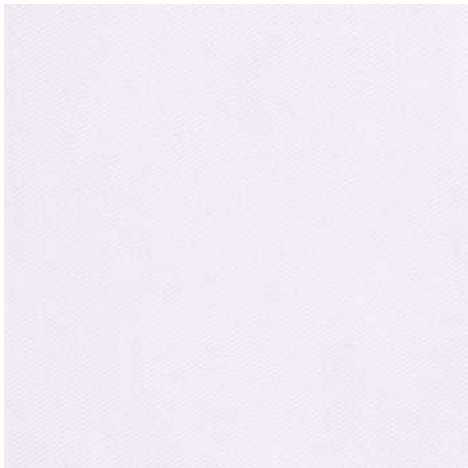
PIQUE



Black



Navy



White

Fabric Type: Pique

Content: 100% Cotton

Weight: 5 oz / sq yd

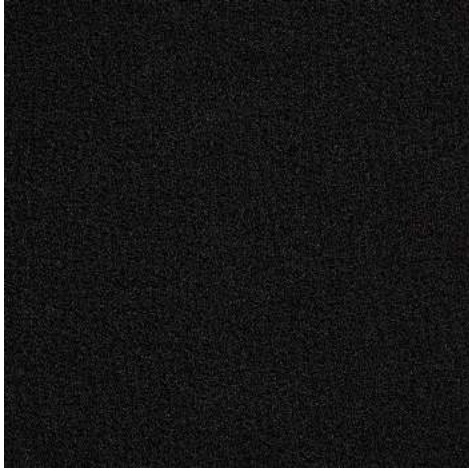
Washing: Machine wash cold, do not bleach, wash dark colors separately, dry gentle cycle low heat, or dry clean. Natural fading over time.

Recommended Silhouettes:

Polo



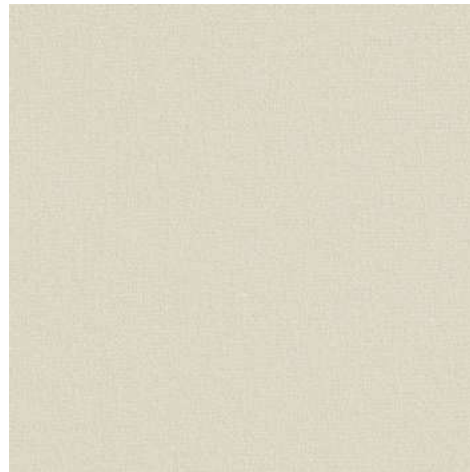
RAYON CREPE



Black



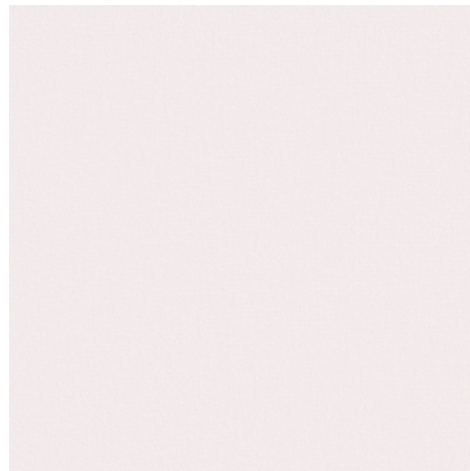
Navy



Off White



Red



White

Fabric Type: Rayon Crepe

Content: 100% Rayon

Weight: 6 oz / sq yd

Washing: Dry clean only

Recommended Silhouettes:

Dresses (FD001, FD002, FD005)



FABRICS



PREMIUM

All Premium fabrics are subject to availability, additional charges, and increased production time. Please inquire during design phase on these points.

COTTON TWILL



Bleach Indigo



British Khaki



Dark Denim



Dusty Pink



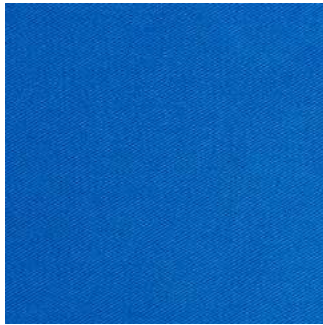
Ecu



Emerald Green



Khaki



Moroccan Blue



Olive



Railroad Stripe



Sand



Smoke



Terracotta

Fabric Type: Cotton Twill

Content: 100% Cotton

Weight: 7 oz / sq yd

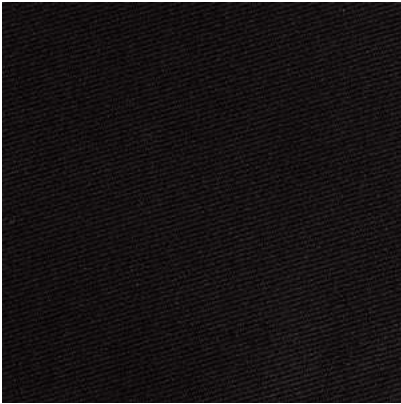
Washing: Machine wash cold, do not bleach, wash dark colors separately, dry gentle cycle low heat, or dry clean. Natural fading over time.

Recommended Silhouettes:

Workwear Coat, Sack Coat, Patch Pocket Blazer, Kimono Coat, Pants, Suiting, Aprons

* Twill w/ 2% Lycra also available for some colors.

COTTON OXFORD



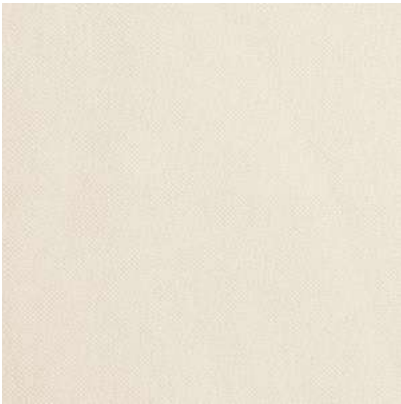
Black



White

Fabric Type: Cotton Oxford
Content: 100% Cotton
Weight: 4 oz / sq yd
Washing: Machine wash cold, do not bleach, wash dark colors separately, dry gentle cycle low heat, or dry clean. Natural fading over time.

Recommended Silhouettes:
Shirting, Dresses, Metier Coat



Ivory



Navy



Taupe



Dusty Pink



SANTA CRUZ TWILL



Fabric Name: Santa Cruz Twill

Fabric Type: 3 thread twill

Content: 100% Cotton

Weight: 8 oz / sq yd

Washing: Machine wash cold, do not bleach, wash dark colors separately, dry gentle cycle low heat, or dry clean. Natural fading over time.

* Subject to availability

* Subject to extra charges

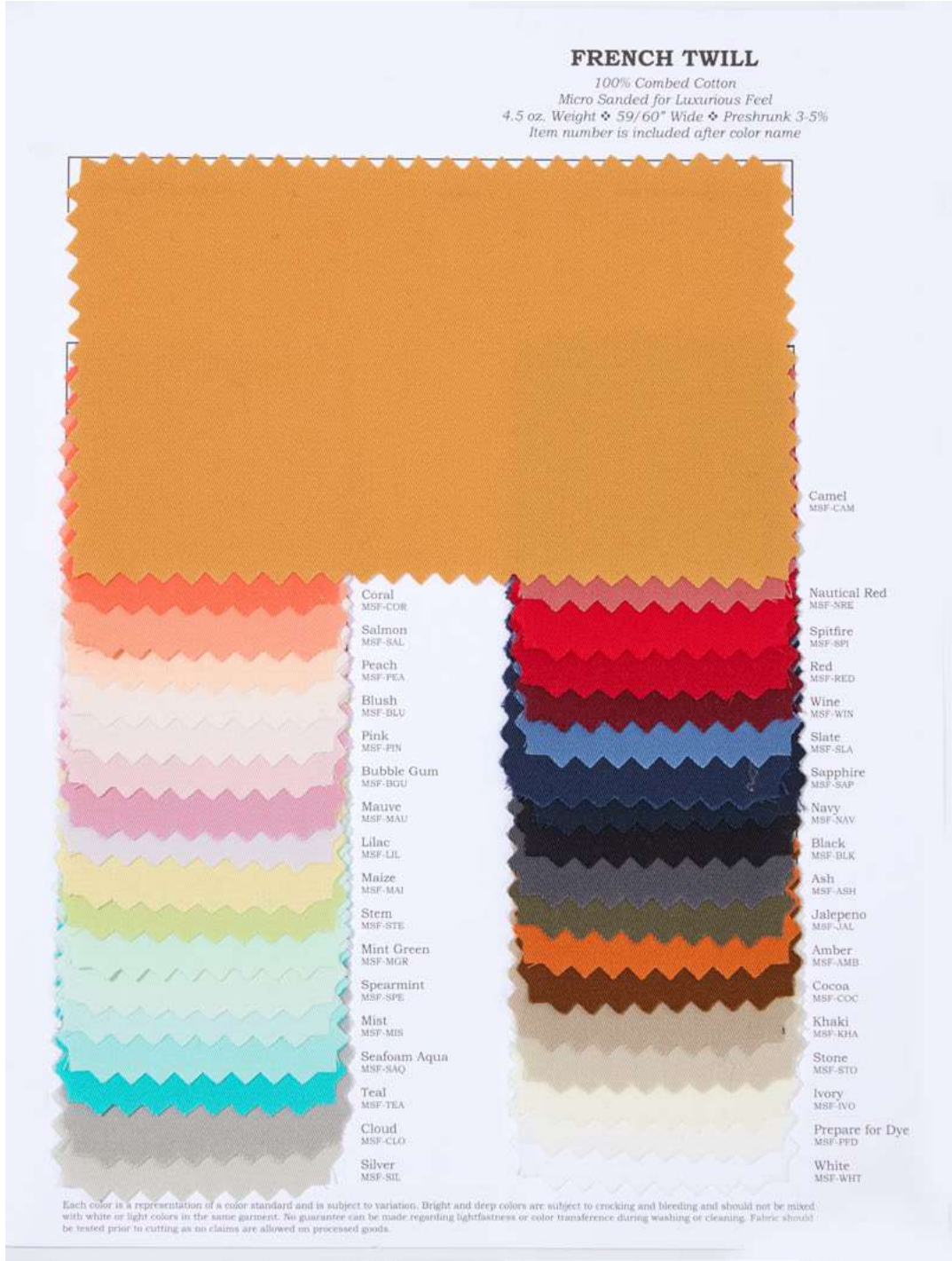
* Subject to added production time

*** Recommended Silhouettes:**

Workwear Coat, Sack Coat, Kimono Coat, Patch Pocket Blazer, Bomber Jacket, Aprons, Pants, Shorts



FRENCH TWILL



Fabric Name: French Twill
Content: 100% Combed Cotton
Weight: 4.5 oz / sq yd
Washing: Machine wash cold, do not bleach, wash dark colors separately, dry gentle cycle low heat, or dry clean. Natural fading over time.

- * Subject to availability
- * Subject to extra charges
- * Subject to added production time

*** Recommended Silhouettes:**
 Shirting, FD007



STRETCH TWILL

Cotton w/ Spandex

SWATCH SHEET

STYLE : **STW-1503**

DESC : STRETCH TWILL
97% COTTON 3% SPANDEX

WIDTH : 52/54"



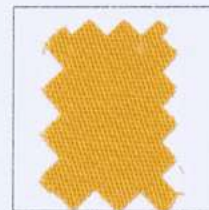
WHITE 57/59"



PFDIVORY-ET



555YELLOW-ET



510MIMOSA-ET



225TAUPE-ET



853ORANGE-ET



899GINGER-ET



366FUSCHIA-ET



613DAHLIA-ET



646AUBERGINE-ET



BURGUNDY 51/52"



444ROYAL-ET



419DNVY



NAVY 1199



BLACK 50/51"

Fabric Name: STW-1503

Content: 97% Cotton / 3% Spandex

Weight: 7.23 oz / sq yd

Washing: Machine wash cold, do not bleach, wash dark colors separately, dry gentle cycle low heat, or dry clean. Natural fading over time.

* Subject to availability

* Subject to extra charges

* Subject to added production time

* **Recommended Silhouettes:** Workwear Coat, Sack Coat, Kimono Coat, Patch Pocket Blazer, Bomber Jacket, Aprons, Pants, Shorts



DUCK CANVAS



Fabric Name: 10oz. DUCK
Fabric Type: Cotton Canvas
Content: 100% Cotton
Weight: 9.25 oz / sq yd
Washing: Machine wash cold, do not bleach, wash dark colors separately, dry gentle cycle low heat, or dry clean. Natural fading over time.

- * Subject to availability
- * Subject to extra charges
- * Subject to added production time

*** Recommended Silhouettes:**
 Workwear Coat, Sack Coat, Kimono Coat, Patch Pocket Blazer, Bomber Jacket, Aprons, Pants, Shorts



DUCK CANVAS



Fabric Name: 10oz. DUCK

Fabric Type: Cotton Canvas

Content: 100% Cotton

Weight: 9.25 oz / sq yd

Washing: Machine wash cold, do not bleach, wash dark colors separately, dry gentle cycle low heat, or dry clean. Natural fading over time.

* Subject to availability

* Subject to extra charges

* Subject to added production time

*** Recommended Silhouettes:**

Workwear Coat, Sack Coat, Kimono Coat, Patch Pocket Blazer, Bomber Jacket, Aprons, Pants, Shorts



WORKER CHAMBRAY

Poly Cotton Blend



Fabric Name: Worker Chambray

Fabric Type: Poly Cotton Blend

Content: 55% Cotton / 45% Poly

Weight: 5 oz / sq yd

Washing: Machine wash cold, do not bleach, wash dark colors separately, dry gentle cycle low heat, or dry clean. Natural fading over time.

* Subject to availability

* Subject to extra charges

* Subject to added production time

*** Recommended Silhouettes:**

Shirting



HOUSE OF LINEN



Fabric Name: House of Linen
Fabric Type: Varies by Type (see swatches)

Content: Varies by Type (see swatches)

Weight: Varies by Type (see swatches)

Washing: Machine wash cold, do not bleach, wash dark colors separately, dry gentle cycle low heat, or dry clean. Natural fading over time.

- * Subject to availability
- * Subject to extra charges
- * Subject to added production time

*** Recommended Silhouettes:**
 Shirting, Kimono Coat, Kimono Duster, Dresses (FD003, FD007, FD008, FD009, FD012)

++ Denotes fabric more readily stocked



HOUSE OF LINEN



Fabric Name: House of Linen

Fabric Type: Varies by Type (see swatches)

Content: Varies by Type (see swatches)

Weight: Varies by Type (see swatches)

Washing: Machine wash cold, do not bleach, wash dark colors separately, dry gentle cycle low heat, or dry clean. Natural fading over time.

* Subject to availability

* Subject to extra charges

* Subject to added production time

*** Recommended Silhouettes:**

Shirting, Kimono Coat, Kimono Duster, Dresses (FD003, FD007, FD008, FD009, FD012)

++ Denotes fabric more readily stocked



TCPOP-9600

Poly Cotton Blend



Fabric Name: TCCPOP-9600

Fabric Type: Poly Cotton Blend

Content: 80% Polyester / 20% Cotton

Weight: 3.5 oz / sq yd

Washing: Machine wash cold, do not bleach, wash dark colors separately, dry gentle cycle low heat, or dry clean. Natural fading over time.

* Subject to availability

* Subject to extra charges

* Subject to added production time

*** Recommended Silhouettes:**
Shirting, Shirt Dresses

++ Denotes fabric more readily stocked



ZANZIBAR

Polyester



Fabric Name: Zanzibar
Fabric Type: Textured Yarn Polyester
Content: 100% Polyester
Weight: 3.65 oz / sq yd
Washing: Machine wash cold, do not bleach, wash dark colors separately, dry gentle cycle low heat, or dry clean.

* Subject to availability
 * Subject to extra charges
 * Subject to added production time

*** Recommended Silhouettes:**
 Shirting, Tunic Top, Wrap Tunic Top, Chef Coat



POP MELANGE POLY

Polyester



Fabric Name: MPOP-003-10221

Fabric Type: Melange Suiting, Polyester

Content: 100% Polyester Poplin

Weight: 5.5 oz / sq yd

Characteristics: Woven with texture and beautiful hand

Washing: Dry clean only.

* Subject to availability

* Subject to extra charges

* Subject to added production time

*** Recommended Silhouettes:**

Suiting Blazer, Suiting Pants, Suiting Vest



AVIATOR NYLON



Fabric Name: Aviator Nylon

Fabric Type: Nylon (Durable Water Repellent Finish)

Content: 100% Nylon

Weight: 8 oz / sq yd

Characteristics: Heavier weight, substantial nylon

Washing: Machine wash cold, do not bleach, wash dark colors separately, never with whites or lights, dry gentle cycle low heat, or dry clean. Natural fading over time.

* Subject to availability

* Subject to extra charges

* Subject to added production time

*** Recommended Silhouettes:**

Rain Jacket, Raincoat, Bomber Jacket



HEAVY FLANNEL

Eco Poly Flannel Blend



Fabric Name: Infinity Recycled / Heavy Flannel
Fabric Type: Poly Flannel Blend (Eco-Friendly)
Content: 44% Repreve Poly / 43% Poly / 11% Liva-Eco Rayon / 2% Spandex
Weight: 11.21 oz / sq yd
Characteristics: Heavy and durable for warmth

*** Recommended Silhouettes:**

Shacket

Washing: Machine wash cold, do not bleach, wash dark colors separately, never with whites or lights, dry gentle cycle low heat, or dry clean. Natural fading over time.

- * Subject to availability
- * Subject to extra charges
- * Subject to added production time



PEACHSKIN POLY

Polyester



Fabric Name: PEACHSKIN-744

Fabric Type: Stretch Crinkle Peachskin Polyester

Content: 100% Polyester Woven

Weight: 4 oz / sq yd

Characteristics: Drapery and silk-like

Washing: Machine wash cold, do not bleach, wash dark colors separately, dry gentle cycle low heat, or dry clean. Natural fading over time.

* Subject to availability

* Subject to extra charges

* Subject to added production time

*** Recommended Silhouettes:**

Dresses (FD002, FD010), FT017, FB006



PEACHSKIN POLY

Polyester



Fabric Name: PEACHSKIN-744

Fabric Type: Stretch Crinkle Peachskin Polyester

Content: 100% Polyester Woven

Weight: 4 oz / sq yd

Characteristics: Drapery and silk-like

Washing: Machine wash cold, do not bleach, wash dark colors separately, dry gentle cycle low heat, or dry clean. Natural fading over time.

* Subject to availability

* Subject to extra charges

* Subject to added production time

*** Recommended Silhouettes:**

Dresses (FD002, FD010), FT017, FB006



ITY CREPE JERSEY

Polyester w/ Spandex



SWATCH SHEET

STYLE : ITY-CREPE-1342

DESC : ITY CREPE JERSEY
95%POLY 5%SPANDEX

WIDTH : 57/59"



WHITE



IVORY 08



BANANA 2792



TAUPE MED MC



TAUPE SB21



MOCHA 792



MELON 1678



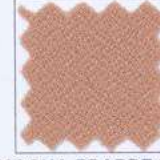
CORAL TAHITI 792



MAUVE DUSTY SB20



MUSTARD



MOCHA FRAPPE 792



MUSHROOM 792



SAGE PALE 2792



SAGE SB20 792



MINT MC



EMERALD JAAB



OLIVE ARMY 607



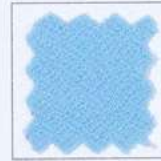
RED CMAB



MAROON 595



MERLOT



BLUE JS19



DENIM 792



ROYAL



NAVY CVAB



BLACK

Fabric Name: ITY-CREPE-1342

Fabric Type: Poly Spandex Blend

Content: 95% Poly / 5% Spandex

Weight: 5 oz / sq yd

Characteristics: Soft and stretchy

Washing: Machine wash cold, do not bleach, wash dark colors separately, never with whites or lights, dry gentle cycle low heat, or dry clean. Natural fading over time.

* Subject to availability

* Subject to extra charges

* Subject to added production time

*** Recommended Silhouettes:**

Dresses (FD013, FD014)



STRETCH DOUBLE CREPE

Polyester w/ Spandex



Fabric Name: SCREPE-DBL01800

Fabric Type: Blend

Content: 95% Poly / 5% Spandex

Weight: 5 oz / sq yd

Characteristics: Soft and stretchy

Washing: Machine wash cold, do not bleach, wash dark colors separately, never with whites or lights, dry gentle cycle low heat, or dry clean. Natural fading over time.

* Subject to availability

* Subject to extra charges

* Subject to added production time

*** Recommended Silhouettes:**

Dresses (FD001, FD002, FD005), FT028



BARBIE GABARDINE

Polyester w/ Spandex



Fabric Name: BARBIE-GAB-5433

Fabric Type: Blend

Content: 96% Poly / 4% Spandex

Weight: 5.5 oz / sq yd

Characteristics: Heavier weight, substantial nylon

Washing: Machine wash cold, do not bleach, wash dark colors separately, never with whites or lights, dry gentle cycle low heat, or dry clean. Natural fading over time.

* Subject to availability

* Subject to extra charges

* Subject to added production time

*** Recommended Silhouettes:**

Women's Blazer, Women's Suiting Pant, Women's Suiting Vest, FD015



SEERSUCKER



Fabric Name: Seersucker Collection
Fabric Type: Varies by Type (see swatches)

Content: Varies by Type (see swatches)

Weight: Varies by Type (see swatches)

Washing: Machine wash cold, do not bleach, wash dark colors separately, dry gentle cycle low heat, or dry clean. Natural fading over time.

- * Subject to availability
- * Subject to extra charges
- * Subject to added production time

*** Recommended Silhouettes:**
 Shirting



SEERSUCKER



Fabric Name: Seersucker Collection
Fabric Type: Varies by Type (see swatches)
Content: Varies by Type (see swatches)
Weight: Varies by Type (see swatches)
Washing: Machine wash cold, do not bleach, wash dark colors separately, dry gentle cycle low heat, or dry clean. Natural fading over time.

* Subject to availability
 * Subject to extra charges
 * Subject to added production time

* **Recommended Silhouettes:**
 Shirting



Model Measurements



Rhett W.

6'2"
165 lbs
Chest: 42"
Waist: 32"
Hips: 39"
Inseam: 34"

Finery Sizes

Jacket : M
Top : M
Drawstring Chino : 32
Slim Chino / Short : 32



Barbara M.

5'9"
120 lbs
Chest: 32"
Waist: 25"
Hips: 34"
Inseam: 29"

Finery Sizes

Jacket : S
Top : S
Drawstring Chino : 26
Slim Chino / Short : 27



Model Measurements



Henri B.

6'4"
208 lbs
Chest: 42"
Waist: 36"
Hips: 42
Inseam: 36"

Finery Sizes

Jacket : 2X
Top : 2X
Drawstring Chino : 36
Slim Chino / Short : 36



Melinda V.

5'8"
120 lbs
Chest: 32"
Waist: 24"
Hips: 36"
Inseam: 33 1/4"

Finery Sizes

Jacket : S
Top : S
Drawstring Chino : 26
Slim Chino / Short : 26



Model Measurements



Isac S.

6'0"
 160 lbs
 Chest: 38"
 Waist: 30"
 Hips: 32"
 Inseam: 31"

Finery Sizes

Jacket : M
 Top : M
 Drawstring Chino : 29-30
 Slim Chino / Short : 30



Ali L.

5'9"
 125 lbs
 Chest: 32"
 Waist: 25"
 Hips: 33"
 Inseam: 30"

Finery Sizes

Jacket : S
 Top : S
 Drawstring Chino : 26
 Slim Chino / Short : 26



Model Measurements



Jason P.

5'9"
145 lbs
Chest: 36"
Waist: 31"
Hips: 38"
Inseam: 31"

Finery Sizes

Jacket : S/M
Top : S/M
Drawstring Chino : 30
Slim Chino / Short : 32



Guy J.

6'2"
165 lbs
Chest: 38"
Waist: 33"
Hips: 40"
Inseam: 32"

Finery Sizes

Jacket : M
Top : M
Drawstring Chino : 32
Slim Chino / Short : 32



Model Measurements



Yvonne G.

5'6"
105 lbs
Chest: 36"
Waist: 32"
Hips: 34"
Inseam: 30"

Finery Sizes

Jacket : S
Top : S
Drawstring Chino : 28
Slim Chino / Short : 30



Leben W.

5'11"
155 lbs
Chest: 38"
Waist: 30"
Hips: 40"
Inseam: 32"

Finery Sizes

Jacket : M
Top : M
Drawstring Chino : 30
Slim Chino / Short : 32



Model Measurements



Miwa S.

5'4"
115 lbs
Chest: 34"
Waist: 29"
Hips: 33"
Inseam: 28"

Finery Sizes

Jacket : S
Top : S
Drawstring Chino : 30
Slim Chino / Short : 30



Chase R.

6'3"
165 lbs
Chest: 38"
Waist: 31"
Hips: 40"
Inseam: 32"

Finery Sizes

Jacket : M
Top : M
Drawstring Chino : 32
Slim Chino / Short : 32



Model Measurements



Hanz S.

6'2"
190 lbs
Chest: 42"
Waist: 35"
Hips: 42"
Inseam: 32"

Finery Sizes

Jacket : L
Top : L
Drawstring Chino : 34
Slim Chino / Short : 36



Kendra S.

5'6"
108 lbs
Chest: 34"
Waist: 26"
Hips: 32"
Inseam: 30"

Finery Sizes

Jacket : XS
Top : XS
Drawstring Chino : 26
Slim Chino / Short : 26



Model Measurements



Peter G.

6'0"
160 lbs
Chest: 38"
Waist: 32"
Hips: 40"
Inseam: 32"

Finery Sizes

Jacket : M
Top : M
Drawstring Chino : 30
Slim Chino / Short : 32



Isis C.

5'5"
114 lbs
Chest: 30"
Waist: 26"
Hips: 30"
Inseam: 28"

Finery Sizes

Jacket : XS
Top : XS
Drawstring Chino : 26
Slim Chino / Short : 26



Color Aging

Unlike most traditional uniforms, the majority of our pieces are not made with polyester or polyester blends. The texture of these fibers give off a shiny, unnatural, and stiff look that have given uniforms a bad name. Polyester also can take up to 200 years to biodegrade vs. cotton's 5 months.

Instead, Finery uses 100% cotton as much as possible. Cotton is much more comfortable and breathable than polyester and will wick sweat away from the body so the wearer doesn't get a wet, clammy feel. It also has a more familiar feel because the majority of the clothes we wear every day are made from cotton.

Cotton will naturally soften and fade over time. This is the beauty of natural fabrics. Below is an example of our 100% cotton twill drawstring chino in navy. The pant on the right is brand new. The pant on the left has been worn 4-5 times a week for 2+ years and went through approximately 1 wash a week. Side by side, you can see the change in the fabric over time, which you can expect through the lifespan of a Finery garment.



Finery
 1114 S. Los Angeles St. #301
 Los Angeles, CA 90015
 info@finery.la

Finery

Acceptance of Goods with Known Defects Waives Claims for Damages:

Buyer must notify Seller in writing of all claims for damages resulting from late delivery or any other defect that is known to Buyer at the time Buyer accepts the merchandise. Buyer hereby waives any claim for damages resulting from any defect Buyer is aware of, including late delivery, at the time Buyer accepts the merchandise for any goods.

Defaults:

It is understood that should the Buyer become Delinquent in Payment, no further sales will be extended and the Seller will charge the Buyer a past due service charge at the rate of 1.5% per month (18% per annum), collection agency fees in the amount of 30%, and/or reasonable attorney fees. Any returned checks will be charged back to the Buyer, and a \$50 handling fee will be charged to the Buyer. If the Buyer's account is insured and the Buyer's account is turned over to a receivable insurance company for a claim, Seller can also charge the client an additional 30% of the principal amount due which is in default. It is understood that these charges are a reasonable estimation of the damages Seller will incur upon Buyer's default.

No Responsibility:

Buyer acknowledges that Seller has no responsibility for any work performed by any vendor referred by Buyer and hereby waives any right to assert any claim against Seller for work performed by any other firm, including but not limited to claims for negligent referral, agency, or respondent superior.

Deterioration of Buyer's Credit:

The Seller has the right, in addition to other Remedies provided by law, to terminate any delivery or suspend further deliveries of other shipments in the event the Buyer fails to pay for any one shipment when the same becomes due. Should the Buyer's financial condition become unsatisfactory to the Seller, the Seller may require certain securities for delivery of goods.

Return / Exchange Policies:

The Seller has the right to refuse exchanges and/or refunds on any goods Buyer purchases that are not defective due to Seller's fault in manufacturing or late delivery. This includes items that Buyer orders that do not fit correctly. Seller provides size specs before all orders and can provide size sets upon request. Either of these will be sufficient in Seller reserving the sole judgment on all exchanges and returns.



THANK YOU.



FINERY ANTI-UNIFORM